



HOSHIZAKI

CERTIFICATION



HACCP International



ISO9001



Compliant with IEC60335-2-89 Standard

HRF-188MC-S UPRIGHT DUAL TEMP



Key Features



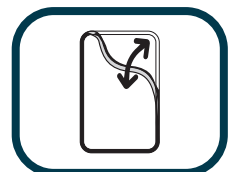
Lower running cost



Powerful cooling performance



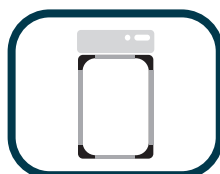
Self Closing Door



Removal door gaskets



Food Guard Shelf



Round Interior Corners



Large and clear display



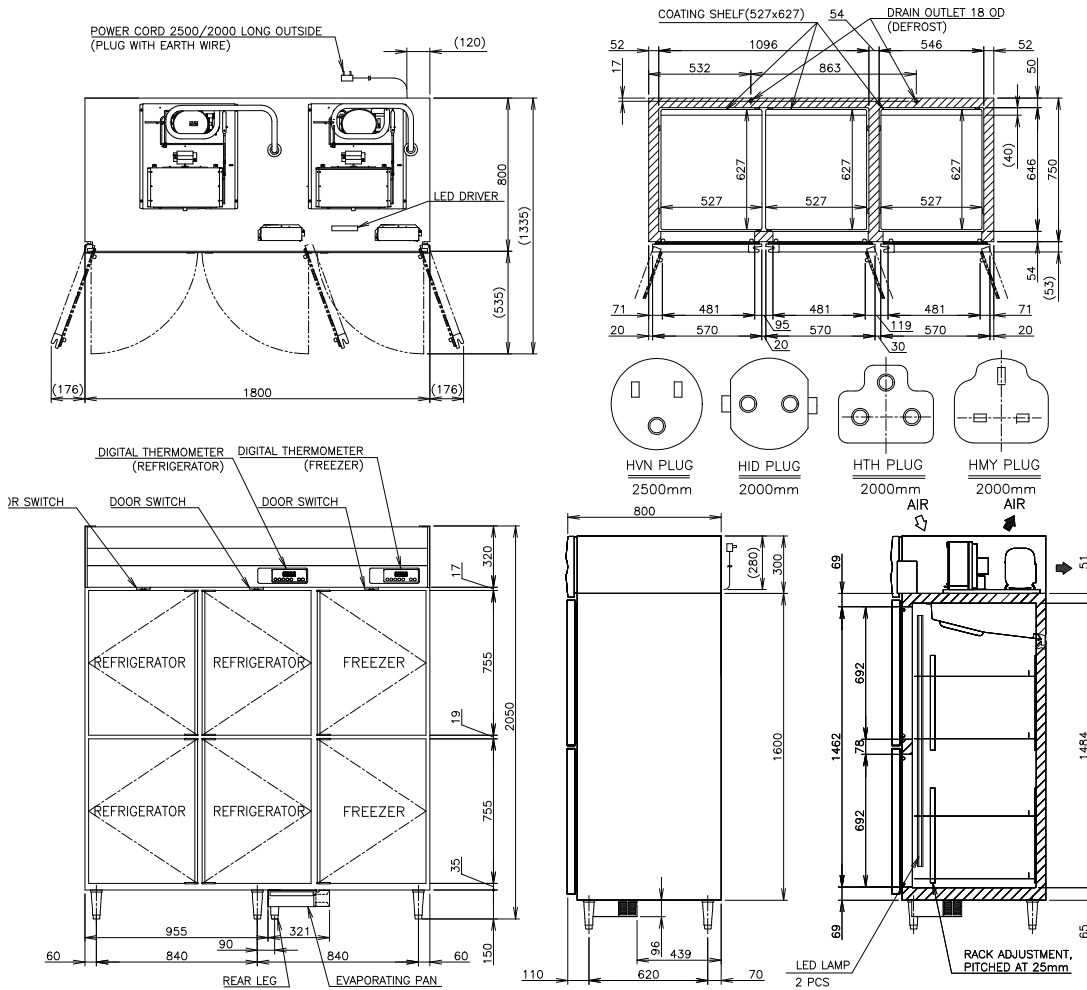
Drainage-Free Design



LED lighting



Dimensions & Specifications



MODEL	HRF-188MC-S
POWER SUPPLY	1 Phase 220-240V 50Hz Capacity: 2.20kVA (5.10A)
ELECTRIC CONSUMPTION	12.44kWh/day
TEMPERATURE CONTROL	Refrigerator: -6 to 12°C, Freezer : -25 to -7°C
STORAGE CAPACITY	1555L (Refrigerator: 1043L, Freezer: 512L)
WEIGHT	Net: 208kg (Gross: Approx. 249kg)
OUTSIDE DIMENSIONS	1800mm(W)× 800mm(D)×2050(-2080)mm(H)
PACKAGE	Carton(Woden pallet): 1860mm(W)×900mm(D)×2075mm(H)
NUMBER OF SHELVES	12pcs
REFRIGERANT	R290
OPERATING CONDITIONS	Ambient Temperature: 5 - 38°C, Voltage Range: Rated Voltage ±6%



HOSHIZAKI

PT. HOSHIZAKI INDONESIA

