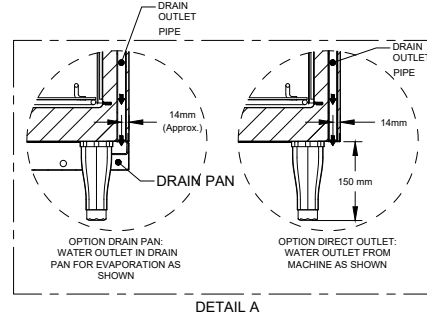
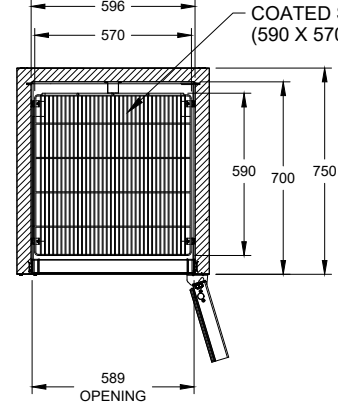
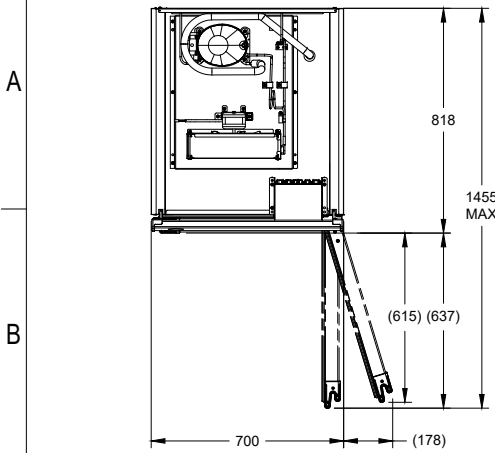


WRU/PCD15;  
 REV/A  
 DATE 01.03.2022  
 THIS DRAWING AND THE INFORMATION CONTAINED HEREIN IS PROPRIETARY TO M/S WESTERN REFRIGERATION PVT. LTD.  
 IT SHALL NOT BE REPRODUCED, COPIED OR DISCLOSED, IN WHOLE OR IN PART OR USED FOR MANUFACTURE OR FOR  
 OTHER PURPOSE WITHOUT THE WRITTEN PERMISSION OF M/S WESTERN REFRIGERATION PVT. LTD.

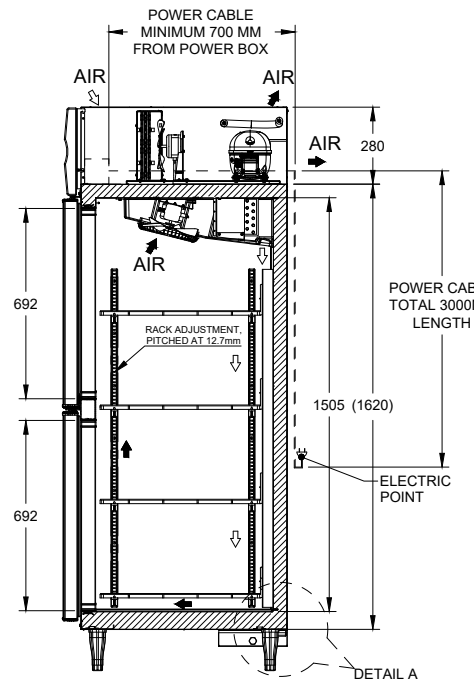
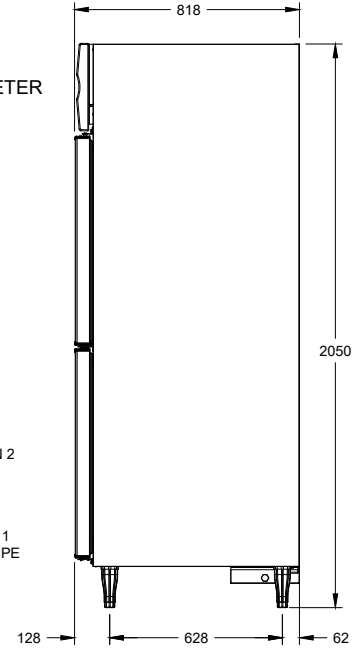
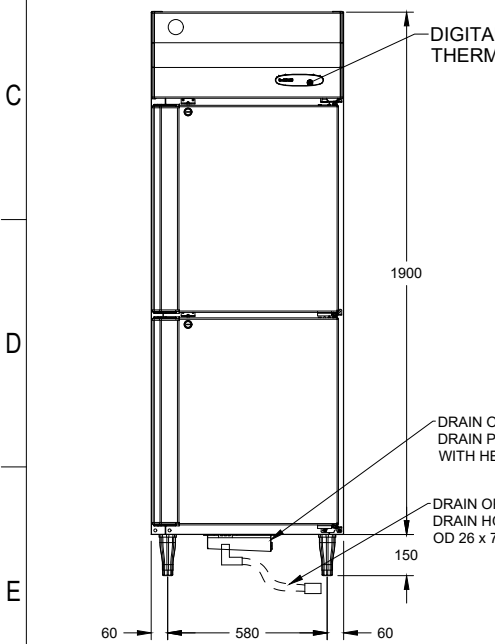
NOTE: COMPONENT AND ASSEMBLY MUST BE COMPLIANT TO APPLICABLE RECENT ROHS DIRECTIVES.

REVISION SHEET NO.		ZONE	CHANGE NOTE		ECN	DATE	DRAWN
			DETAILS				



- OPTIONS:
1. PLASTIC 90MM HEIGHT LEG ARE AVAILABLE AS OPTION. (MACHINE OVERALL HEIGHT WILL DECREASE BY 60MM)
  2. CASTOR 124MM HEIGHT ARE AVAILABLE AS OPTION (REFER SHEET 2)
  3. BOTTOM & REAR PANEL CAN BE AVAILABLE IN SUS 430/ SUS304
  4. TOP COVER PANEL IS AVAILABLE AS OPTION, MACHINE OVERALL HEIGHT WILL INCREASE BY 31 MM.

ITEM	HOSHIZAKI REFRIGERATOR
MODEL	HRWH77MS4 / HRWH77LS4
POWER SUPPLY	SINGLE PHASE, 230V AC, 50HZ
RATED CURRENT	1.7 AMPS
RATED POWER	350W
HEAT REJECTION	0.785 KW
POWER CORD	16 AMPS / 3 METER
EFFECTIVE CAPACITY	572L
OUTSIDE DIMENSIONS	700 (W) X 818 (D) X 2050 (H - WITH 150MM LEG)
INSIDE DIMENSIONS	596 (W) X 700 (D) X 1505 (H)
EXTERIOR	SS 430 HAIRLINE NO 4 FINISH, GALVANIZED STEEL POWDER COATED (BOTTOM)
INTERIOR	SS 430 HAIRLINE NO 4 FINISH
INSULATION	POLYURETHANE FOAM (CFC FREE)
INSULATION FOAM BLOWING AGENT	CYCLOPENTANE
REFRIGERATION SYSTEM	FORCED AIR CIRCULATION
DEFROST STSTEM	IN COMPRESSOR OFF CYCLE
COMPRESSOR	HERMETIC 532 W
CONDENSER	FORCED (WIRE ON TUBE)
EVAPORATOR	FORCED (FIN & TUBE)
REFRIGERANT/ CHARGE	R-290 / 70 gram
TEMP. CONTROL	ELECTRONIC ADJUSTABLE FROM -2°C TO 12°C
DEFROST CONTROL	BY TEMPERATURE CONTROLLER
ELECTRIC CIRCUIT PROTECTION	NON RESETTABLE FUSE (GLASS FUSE) 10 AMP
COMPRESSOR PROTECTION	MOTOR PROTECTOR
LEG	PLASTIC ADJUSTABLE 150 TO 170MM
SHELF	4 PCS
WEIGHT	NET: 109KG (GROSS: APPROX 125KG)
PACKAGE	CARTON (WOODEN PALLET) 785MM (W) X 895MM (D) X 2045MM(H)
ACCESSORIES	DRAIN ACCESSORIES AND SHELF CLIPS
OPERATING CONDITIONS	AMBIENT TEMPERATURE : 5 - 43°C VOLTAGE RANGE RATED VOLTAGE ±6%
CABINET LAMP (FOR LS4 VERSION)	LED STRIP TYPE 525MM, 4W, DC24V
LAMP DRIVER (FOR LS4 VERSION)	ELECTRONIC DRIVER 8.5W OR 12W



\*WE RESERVE THE RIGHT TO MAKE CHANGES IN SPECIFICATIONS AND DESIGN WITHOUT PRIOR NOTICE

1. INSTALL THE PRODUCT PROPERLY IN ACCORDANCE WITH THE INSTRUCTIONS ON LOCATION, ELECTRICAL CONNECTIONS STATED IN THE INSTRUCTION MANUAL PROVIDED. ALLOW 10MM EXTRA SPACE AT THE INSTALLATION SITE TO MEET ANY INSTALLATION REQUIREMENTS (ADDITIONAL SPACING IS ALSO REQUIRED FOR PROPER AIR FLOW AND PIPE CONNECTIONS).
2. THE HEAT REJECTION IS BASED ON THE REACHED PULL DOWN TEMPERATURE AT AMBIENT TEMPERATURE OF 43°C AND POWER SUPPLY OF 230VAC 50HZ. THE AMPERAGE AND ELECTRIC CONSUMPTION ARE BASED ON MEASUREMENT AT AMBIENT TEMPERATURE OF 43°C AND POWER SUPPLY OF 230VAC 50HZ.

UNSPECIFIED TOLERANCES						
DIM	<6	6-30	30-120	120-400	400-1000	>1000
TOL	N/A	±1.0	±1.5	±2.0	±2.5	±3.0
UNSPECIFIED TOL. ON ANGLE ±0.5						

SCALE: NTS
ALL DIMENSIONS ARE IN MM
DRAWN BY: ROSHAN
CHECKED BY: ANAND
APPROVED BY: PRATAP

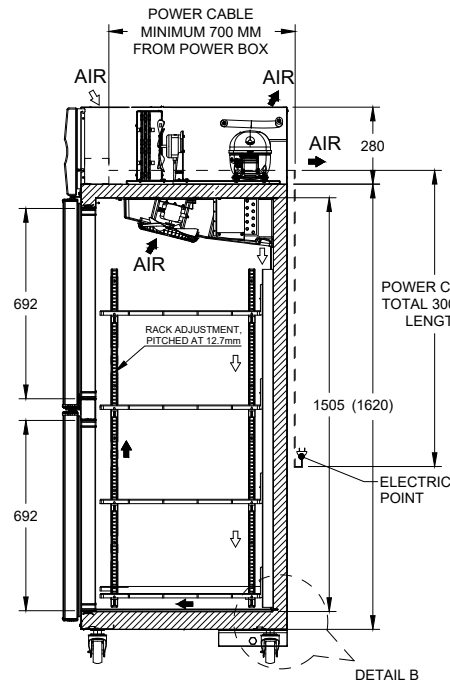
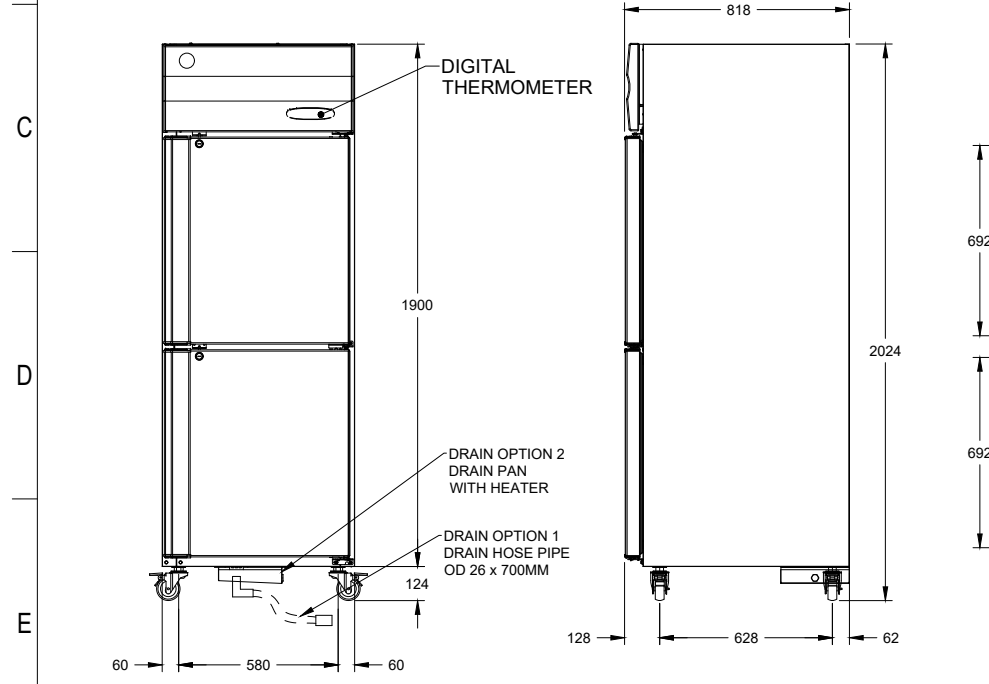
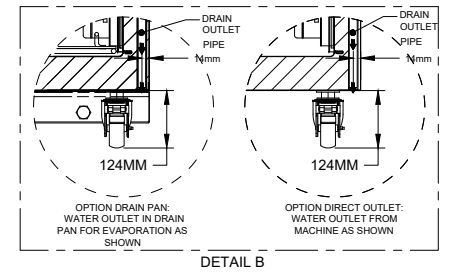
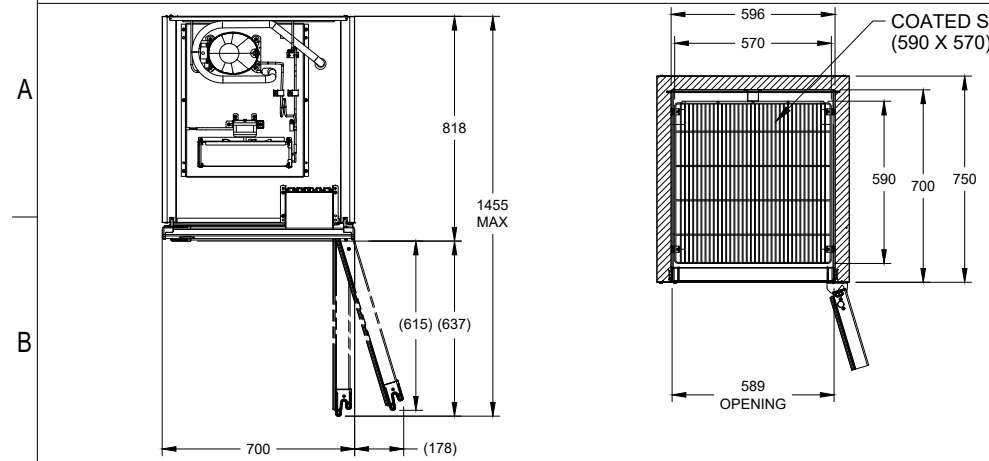
TITLE: REACH-IN REFRIGERATOR
MODEL: HRWH77MS4/ HRWH77LS4
RELEASE DATE: 17.08.2023
SHEET: 1 OF 2
RELEASED

DWG. NO.: 0711544
SAP CODE: --
REVISION: A
WESTERN

THIS ASSEMBLY DRAWING IS FOR ILLUSTRATION PURPOSE. COMPONENTS, ASSEMBLY SEQUENCE MAY VARY DEPENDING UPON MANUFACTURING PRACTICES SPECIFIC TO MANUFACTURING LOCATIONS. REFER PROCESS WORK INSTRUCTIONS FOR MORE DETAILS ON ASSEMBLY. REFER SAP BOM FOR EXACT MATERIAL CONSUMPTION.

WRU/PC/15;  
 REV/A  
 DATE 01.03.2022  
 THIS DRAWING AND THE INFORMATION CONTAINED HEREIN IS PROPRIETARY TO M/S WESTERN REFRIGERATION PVT. LTD.  
 IT SHALL NOT BE REPRODUCED, COPIED OR DISCLOSED, IN WHOLE OR IN PART OR USED FOR MANUFACTURE OR FOR  
 OTHER PURPOSE WITHOUT THE WRITTEN PERMISSION OF M/S WESTERN REFRIGERATION PVT. LTD.

NOTE: COMPONENT AND ASSEMBLY MUST BE COMPLIANT TO APPLICABLE RECENT ROHS DIRECTIVES.



OPTIONS:  
 3. BOTTOM & REAR PANEL CAN BE AVAILABLE IN SUS 430 / SUS304  
 4. TOP COVER PANEL IS AVAILABLE AS OPTION, MACHINE OVERALL HEIGHT WILL INCREASE BY 31 MM.

ITEM	HOSHIZAKI REFRIGERATOR
MODEL	HRWH77MS4 / HRWH77LS4
POWER SUPPLY	SINGLE PHASE, 230V AC, 50HZ
RATED CURRENT	1.7 AMPS
RATED POWER	350 W
HEAT REJECTION	0.785 KW
POWER CORD	16 AMPS / 3 METER
EFFECTIVE CAPACITY	572L
OUTSIDE DIMENSIONS	700 (W) X 818 (D) X 2024 (H - WITH CASTOR)
INSIDE DIMENSIONS	596 (W) X 700 (D) X 1505 (H)
EXTERIOR	SS 430 HAIRLINE NO 4 FINISH, GALVANIZED STEEL POWDER COATED (BOTTOM)
INTERIOR	SS 430 HAIRLINE NO 4 FINISH
INSULATION	POLYURETHANE FOAM (CFC FREE)
INSULATION FOAM BLOWING AGENT	CYCLOPENTANE
REFRIGERATION SYSTEM	FORCED AIR CIRCULATION
DEFROST STSTEM	IN COMPRESSOR OFF CYCLE
COMPRESSOR	HERMETIC 532 W
CONDENSER	FORCED (WIRE ON TUBE)
EVAPORATOR	FORCED (FIN & TUBE)
REFRIGERANT/ CHARGE	R-290 / 70 gram
TEMP. CONTROL	ELECTRONIC ADJUSTABLE FROM -2°C TO 12°C
DEFROST CONTROL	BY TEMPERATURE CONTROLLER
ELECTRIC CIRCUIT PROTECTION	NON RESETTABLE FUSE (GLASS FUSE) 10 AMP
COMPRESSOR PROTECTION	MOTOR PROTECTOR
CASTOR	NON ADJUSTABLE 4 NOS
SHELF	4 PCS
WEIGHT	NET: 111KG (GROSS: APPROX 127KG)
PACKAGE	CARTON (WOODEN PALLET) 785MM (W) X 895MM (D) X 2045MM(H)
ACCESSORIES	DRAIN ACCESSORIES AND SHELF CLIPS
OPERATING CONDITIONS	AMBIENT TEMPERATURE : 5 - 43°C VOLTAGE RANGE RATED VOLTAGE ±6%
CABINET LAMP (FOR LS4 VERSION)	LED STRIP TYPE 525MM, 4W, DC24V
LAMP DRIVER (FOR LS4 VERSION)	ELECTRONIC DRIVER 8.5W OR 12W

\*WE RESERVE THE RIGHT TO MAKE CHANGES IN SPECIFICATIONS AND DESIGN WITHOUT PRIOR NOTICE

- INSTALL THE PRODUCT PROPERLY IN ACCORDANCE WITH THE INSTRUCTIONS ON LOCATION, ELECTRICAL CONNECTIONS STATED IN THE INSTRUCTION MANUAL PROVIDED. ALLOW 10MM EXTRA SPACE AT THE INSTALLATION SITE TO MEET ANY INSTALLATION REQUIREMENTS (ADDITIONAL SPACING IS ALSO REQUIRED FOR PROPER AIR FLOW AND PIPE CONNECTIONS).
- THE HEAT REJECTION IS BASED ON THE REACHED PULL DOWN TEMPERATURE AT AMBIENT TEMPERATURE OF 43°C AND POWER SUPPLY OF 230VAC 50HZ. THE AMPERAGE AND ELECTRIC CONSUMPTION ARE BASED ON MEASUREMENT AT AMBIENT TEMPERATURE OF 43°C AND POWER SUPPLY OF 230VAC 50HZ.

OPTIONS	SUS 430
STANDARD	HRWH77MS4
LED VERSION	HRWH77LS4

SCALE: NTS  ALL DIMENSIONS ARE IN MM	TITLE	DWG. NO.	REVISION
	REACH-IN REFRIGERATOR	0711544	A
DRAWN BY	MODEL	SAP CODE	
ROSHAN	HRWH77MS4/ HRWH77LS4	--	
CHECKED BY	RELEASE DATE	SHEET	
ANAND	17.08.2023	2 OF 2	
APPROVED BY	RELEASE STAGE:	WESTERN	
PRATAP	RELEASED		