



COMMERCIAL ICE MAKER

FM-120KS-50-HC
FM-120KS-50-HCN

PARTS LIST

[HSH][HID][HTH]
[HS][HMY][HVN]
[HPH]

F301
F301-C001,F301-C002,F301-C003,F301-C121
F301-C122,F301-C161,F301-C471,F301-D002
F301-D003,F301-D121,F301-D122,F301-D471

P-1 DEC. 2024
Q-1 JUN. 2025

Product Code Spec

FM-120KS-50-HC

| | |
|------------------|----------|
| F301 | Standard |
| F301-C002 | For HID |
| F301-C003 | For HTH |
| F301-C121 | For HS |
| F301-C122 | For HMY |
| F301-C161 | For HPH |
| F301-C471 | For HVN |

FM-120KS-50-HCN

| | |
|------------------|---------|
| F301-C001 | For HSH |
| F301-D002 | For HID |
| F301-D003 | For HTH |
| F301-D121 | For HS |
| F301-D122 | For HMY |
| F301-D471 | For HVN |

AUXILIARY CODE

U - 1

The auxiliary code is the first two characters in the serial number. The first character indicates the production year. Years progress or regress in alphabetical order. The series of letters and skipped letters depend on UL listing, production, and model. See the auxiliary code(s) and corresponding year(s) on the front cover.

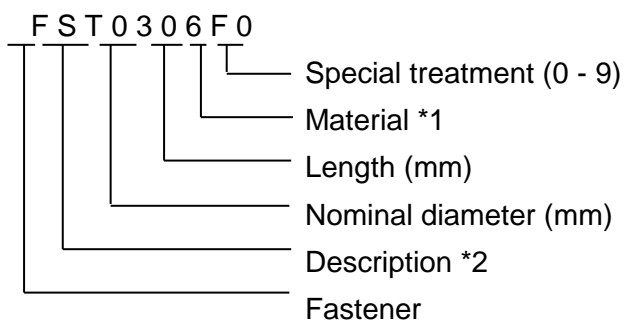
The second character indicates significant part changes within the same year. Base is "1" and this number advances for each change. If there is no significant part change at the turn of the year, this number starts from "0."

MARKS LOCATED UNDER THE AUXILIARY CODE

- = Part deleted.
- x = Part deleted and replaced by "o" part.
- o = New part in place of "x" part.

FASTENER PART NUMBER

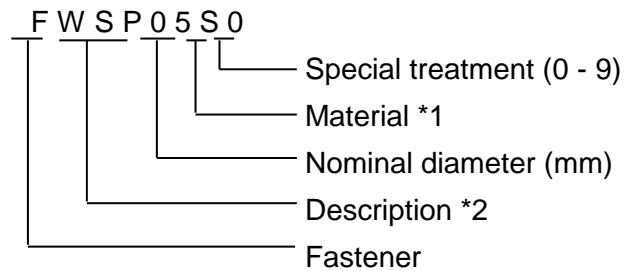
SCREWS



*₁ Material

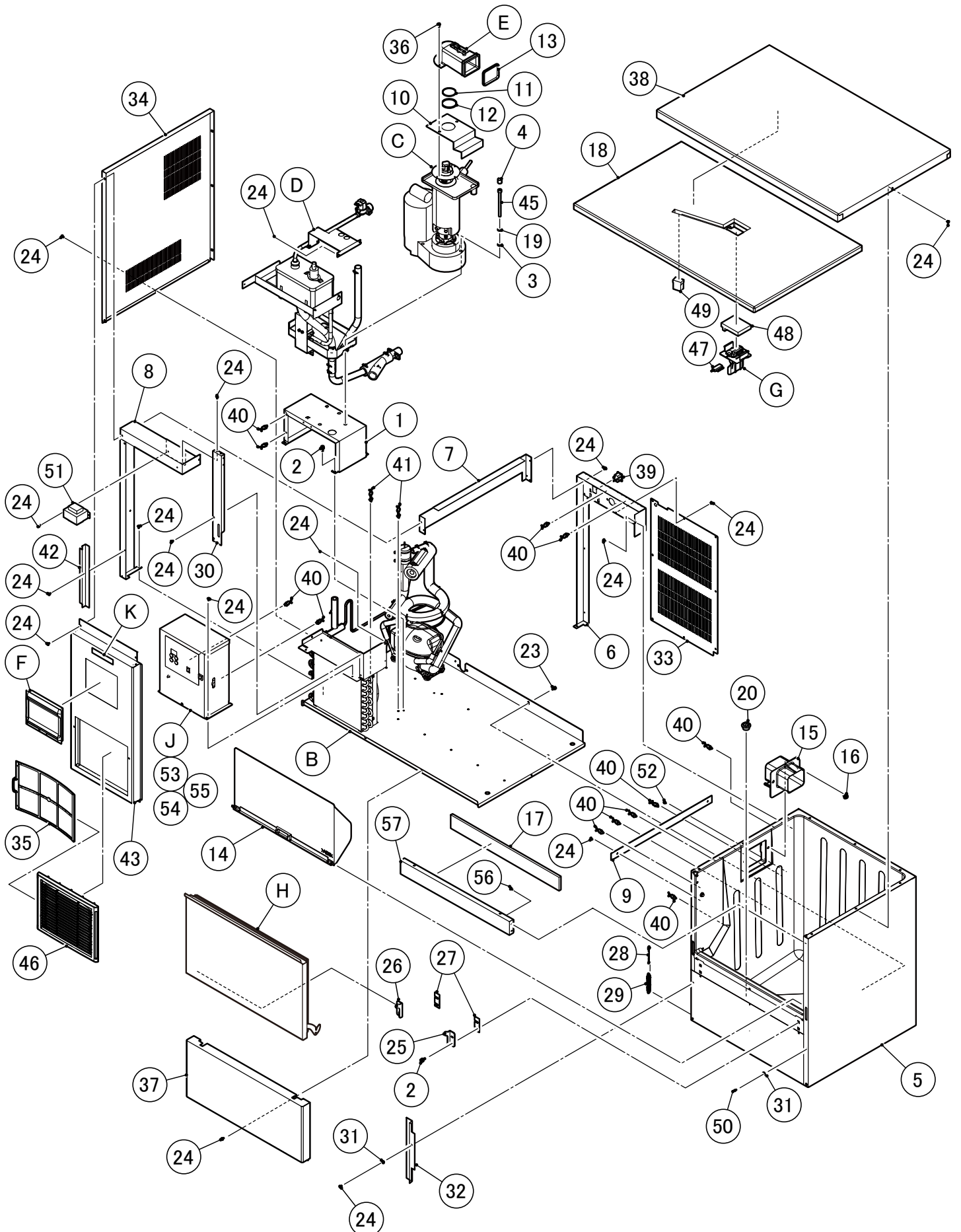
- F: Steel
- S: Austenitic stainless steel
- M: Martensitic stainless steel
- B: Copper alloy
- P: Polycarbonate
- N: Polyamide
- V: PVC
- A: ABS
- X: Polyacetal
- L: Aluminum

NUTS & WASHERS



*₂ Description

- First letter
- S: Machine screw
- T: Tapping screw
- M: Wood screw
- B: Bolt
- W: Washer
- N: Nut



MODEL: **FM-120KS-50-HC**
FM-120KS-50-HCN

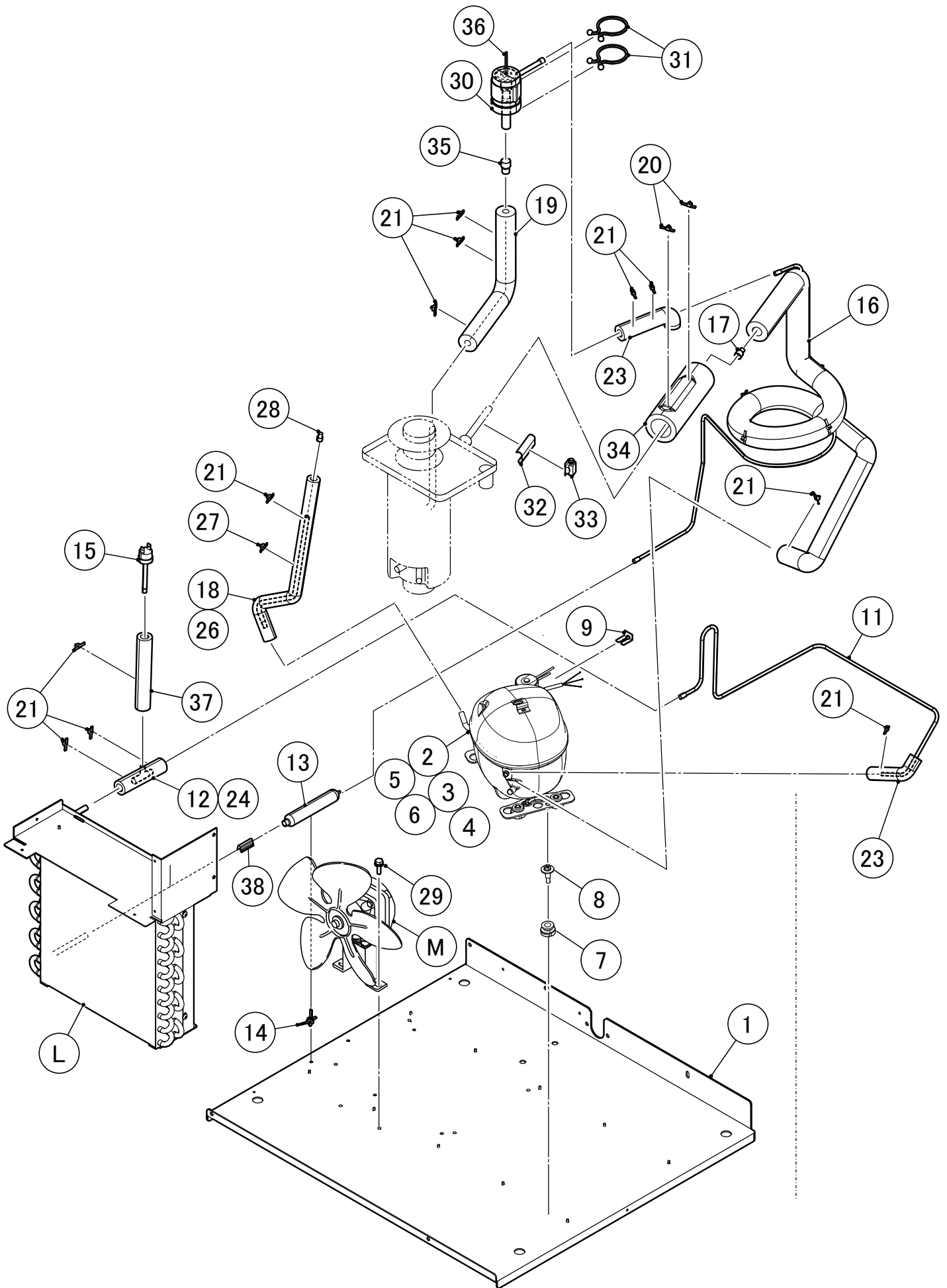
TITLE: **A. ICE FLAKER ASSY**

| INDEX NO. | DESCRIPTION | MATERIAL OR MODEL NUMBER | PART NUMBER | REQ'D NUMBER | | | | |
|-----------|---|---|-------------|---------------|--|--|--|--|
| | | | | P-1 and later | | | | |
| B | REFRIGERATION CIRCUIT | | 1C0831A01 | 1 | | | | |
| | | F301-C161 | 1C0831001 | 1 | | | | |
| C | ICE MAKING UNIT | F301,F301-C001 F301-C002,F301-C003 F301-C121,F301-C122 F301-C161,F301-C471 | 3C1116A01 | 1 | | | | |
| | | F301-D002,-D003 F301-D121,D122 F301-D471 | 3C1116001 | 1 | | | | |
| D | WATER CIRCUIT ASSY | | 1C0690A01 | 1 | | | | |
| E | SPOUT ASSY | | 358941A01 | 1 | | | | |
| F | WINDOW PANEL ASSY | | 348243A03 | 1 | | | | |
| G | ACTUATOR ASSY | | 350301A01 | 1 | | | | |
| H | DOOR ASSY | | 3C1759A01 | 1 | | | | |
| J | CONTROL BOX ASSY | | 2C1276A01 | 1 | | | | |
| K | LABEL LOCATION | F301 | 2C1291002 | 1 | | | | |
| | | F301-C001 | 2C1291003 | 1 | | | | |
| | | F301-C002 | 2C1291012 | 1 | | | | |
| | | F301-C003, F301-C121 F301-C122, F301-C471 | 2C1291008 | 1 | | | | |
| | | F301-D002, | 2C1291013 | 1 | | | | |
| | | F301-D003, F301-D121 F301-D122, F301-D471 | 2C1291009 | 1 | | | | |
| | | F301-C161 | 2C1291016 | 1 | | | | |
| N | ACCESSORIES | F301, F301-C001 | A04603-01 | 1 | | | | |
| | | F301-C002,-D002 | A04603001 | 1 | | | | |
| | | F301-C003,-D003 | A04603002 | 1 | | | | |
| | | F301-C121,-C122 F301-D121,-D122 | A04603003 | 1 | | | | |
| | | F301-C471,-D471 | A04603004 | 1 | | | | |
| | | F301-C161 | A04603005 | 1 | | | | |
| 1 | BRACKET / GM | | 3C0931G01 | 1 | | | | |
| 2 | HEX HEAD BOLT (SPRING WASHER AND FLAT WASHER) | | FBK0620S0 | 8 | | | | |
| 3 | SEAL WASHER | | 458299-01 | 3 | | | | |
| 4 | VINYL CAP | | 451272-01 | - | | | | |
| 5 | BIN - FOAMED | | 2C1338G01 | 1 | | | | |
| 6 | REAR FRAME | | 2C1277M01 | 1 | | | | |
| 7 | SIDE FRAME | | 3C1092M01 | 1 | | | | |

MODEL: **FM-120KS-50-HC**
FM-120KS-50-HCN

TITLE: **A. ICE FLAKER ASSY**

| INDEX NO. | DESCRIPTION | MATERIAL OR MODEL NUMBER | PART NUMBER | REQ'D NUMBER | | | | |
|-----------|---|--------------------------|-------------|---------------|--|--|--|--|
| | | | | P-1 and later | | | | |
| 8 | FRONT FRAME | | 2C1069M01 | 1 | | | | |
| 9 | BRACE - EVAPORATOR | | 4C0550M01 | 1 | | | | |
| 10 | BRACKET-EVA | | 3C0933M01 | 1 | | | | |
| 11 | O-RING | | 7616-G045 | 1 | | | | |
| 12 | RING | | 432661-03 | 1 | | | | |
| 13 | PACKING (A) - SPOUT | | 427152-02 | 1 | | | | |
| 14 | SLOPE | | 362590G01 | 1 | | | | |
| 15 | SPOUT(B) | | 232654-02 | 1 | | | | |
| 16 | BOLT | | FBK0616S0 | 2 | | | | |
| 17 | INSULATION - FRONT | | 466394-02 | 1 | | | | |
| 18 | UPPER PANEL | | 2C2202G01 | 1 | | | | |
| 19 | SPRING WASHER | | FWSP08S0 | 3 | | | | |
| 20 | DRAIN PIPE | | 466275-01 | 1 | | | | |
| 23 | HEX HEAD BOLT (SPRING WASHER AND FLAT WASHER) | | FBK0512S0 | 1 | | | | |
| 24 | TRUSS HEAD TAPPING SCREW (S-TITE) | | FTS0408M0 | 38 | | | | |
| 25 | HINGE (RIGHT) | | 4H2583-01 | 1 | | | | |
| 26 | HINGE (LEFT) | | 4H2584-01 | 1 | | | | |
| 27 | HINGE SPACER (B) | | 4H0605-02 | 2 | | | | |
| 28 | HOOK | | 404060-07 | 1 | | | | |
| 29 | SPRING | | 4H0823-01 | 1 | | | | |
| 30 | FRONT PLATE | | 3C1109M01 | 1 | | | | |
| 31 | TAPER COLLAR | | 4H0171-01 | 2 | | | | |
| 32 | BARRIER - AIR (B) | | 468195-01 | 1 | | | | |
| 33 | REAR PANEL(L) | | 2C1168M01 | 1 | | | | |
| 34 | SIDE PANEL(L) | | 2C1166M01 | 1 | | | | |
| 35 | AIR FILTER | | 2X0416G01 | 1 | | | | |
| 36 | HEX HEAD BOLT (SPRING WASHER AND FLAT WASHER) | | FBK0412S0 | 3 | | | | |
| 37 | FRONT PANEL (R) | | 3C1126M01 | 1 | | | | |
| 38 | TOP PANEL | | 2C1278M02 | 1 | | | | |
| 39 | CONNECTOR | | P00245-02 | 1 | | | | |
| 40 | CLAMP | | P05216-01 | - | | | | |
| 41 | CLAMP | No.1F55 | 427902-05 | 15 | | | | |
| 42 | BARRIER - AIR | | 4C0551M01 | 1 | | | | |



MODEL: **FM-120KE-50-HC**
FM-120KE-50-HCN

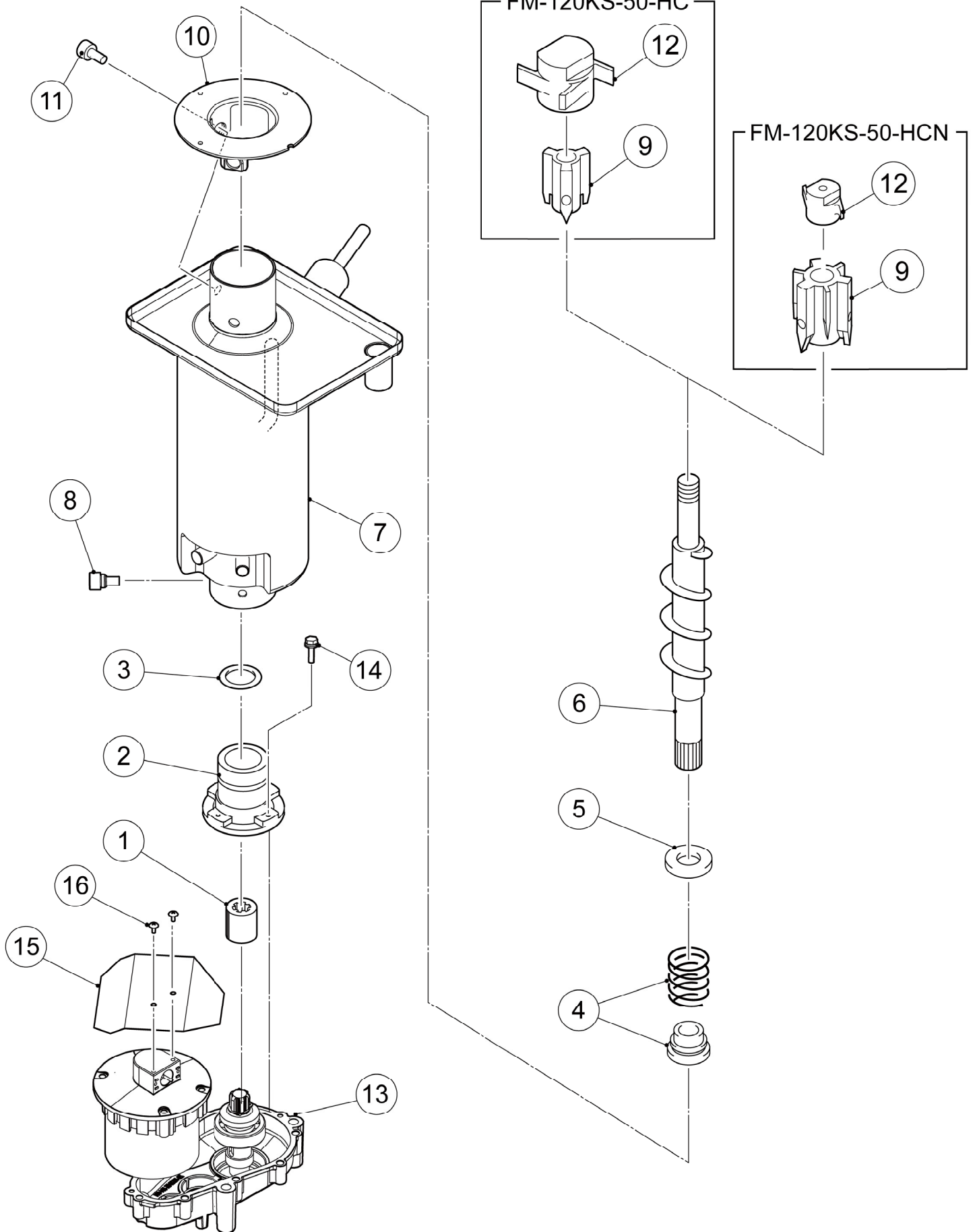
TITLE: **B. REFRIGERATION CIRCUIT**

| INDEX NO. | DESCRIPTION | MATERIAL OR MODEL NUMBER | PART NUMBER | REQ'D NUMBER | | | | |
|-----------|----------------------------|--------------------------|-------------|---------------|--|--|--|--|
| | | | | P-1 and later | | | | |
| L | CONDENSER ASSY | | 2C1086A01 | 1 | | | | |
| M | FAN MOTOR ASSY | | 379865A02 | 1 | | | | |
| | | | | | | | | |
| 1 | BASE | | 2C1336G01 | 1 | | | | |
| 2 | COMPRESSOR | | P07002-01 | 1 | | | | |
| | | F301-C161 | P07565-01 | 1 | | | | |
| 3 | STARTING RELAY | | P07059-01 | 1 | | | | |
| | | F301-C161 | P07567-01 | 1 | | | | |
| 4 | START CAPACITOR | | P07060-01 | 1 | | | | |
| | | F301-C161 | P07566-01 | 1 | | | | |
| 5 | COVER ASSEMBLE | | P07061-01 | 1 | | | | |
| 6 | BUSH CUSHION | | 450895-01 | 4 | | | | |
| 7 | GROMMET | | 450897-01 | 4 | | | | |
| 8 | BOLT | | C05825-01 | 3 | | | | |
| 9 | CLIP | | 452256-01 | - | | | | |
| 10 | STARTING RELAY | 117U7015 | P04177-01 | - | | | | |
| 11 | COPPER TUBE(A) - HIGH SIDE | | 2C1270M01 | 1 | | | | |
| 12 | TEE | | 420041-03 | - | | | | |
| 13 | DRIER | | P00026-01 | 1 | | | | |
| 14 | TIE | | P05042-01 | 1 | | | | |
| 15 | PRESSURE SWITCH | | 459863-08 | - | | | | |
| 16 | HEAT EXCHANGER | | 2C1175G01 | 1 | | | | |
| 17 | REDUCER | 9.52 x 8 | 421904-17 | 1 | | | | |
| 18 | PROCESS TUBE - LOW SIDE | | 4C0527-01 | 1 | | | | |
| 19 | INSULATION TUBE | | Y71030300 | 1 | | | | |
| 20 | TIE | CV-100 | 7920-0028 | - | | | | |
| 21 | TIE | CV-150 | 7920-0003 | 7 | | | | |
| 23 | INSULATION TUBE | | H71323130 | - | | | | |
| 24 | INSULATION TUBE | | H71323B13 | - | | | | |
| 26 | INSULATION TUBE | | H71020390 | - | | | | |
| 27 | NYLON TIE | | 7920-0010 | 1 | | | | |
| 28 | LOCKRING STOPPER | | P01677-01 | - | | | | |
| 29 | BOLT | | FBK0512F0 | 2 | | | | |
| 30 | VALVE COVER | | 3Y3196P01 | 1 | | | | |

MODEL: **FM-120KE-50-HC**
FM-120KE-50-HCN

TITLE: **B. REFRIGERATION CIRCUIT**

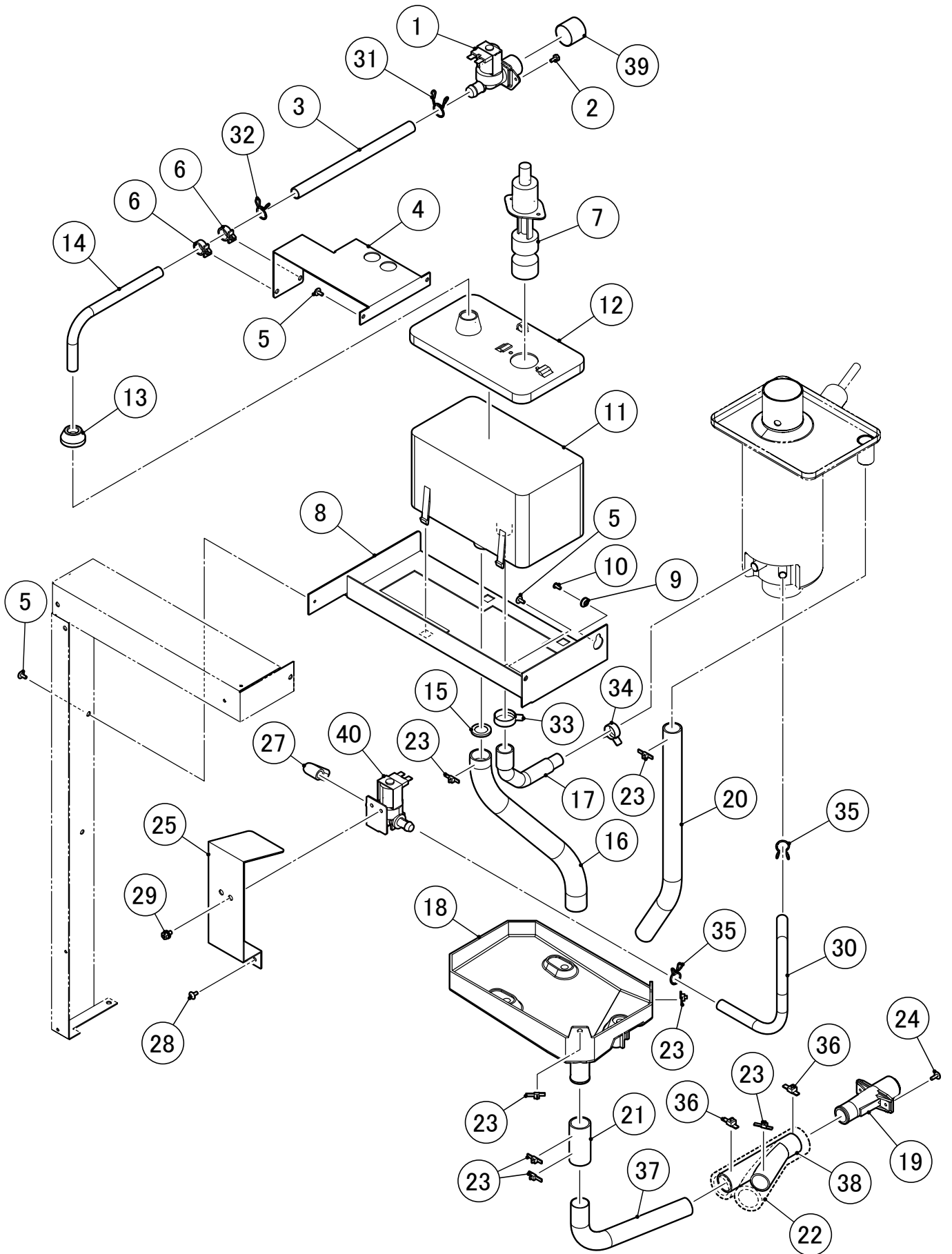
| INDEX NO. | DESCRIPTION | MATERIAL OR MODEL NUMBER | PART NUMBER | REQ'D NUMBER | | | | |
|-----------|---------------------|--------------------------|-------------|---------------|--|--|--|--|
| | | | | P-1 and later | | | | |
| 31 | CLAMP | | P00752-01 | 2 | | | | |
| 32 | HOLDER - EXPV | | 451267-01 | 1 | | | | |
| 33 | CLAMP | | 443461-01 | 1 | | | | |
| 34 | INSULATION TUBE | | H73858B15 | 1 | | | | |
| 35 | REDUCER | | 421904-01 | 1 | | | | |
| 36 | EXPANSION VALVE | HFE-5KHD-2 | P04179-01 | 1 | | | | |
| 37 | INSULATION TUBE | | H71626130 | - | | | | |
| 38 | THERMISTOR - HOLDER | | 458132-0 | 1 | | | | |



MODEL: **FM-120KE-50-HC**
FM-120KE-50-HCN

TITLE: **C. ICE MAKING UNIT**

| INDEX NO. | DESCRIPTION | MATERIAL OR MODEL NUMBER | PART NUMBER | REQ'D NUMBER | | | | |
|-----------|------------------------|---|-------------|--------------|------------------|--|--|--|
| | | | | P-1 Q-0 | Q-1 and later | | | |
| 1 | COUPLING - SPLINE | | 418316-01 | 1 | 1 | | | |
| 2 | HOUSING | | 383613G02 | 1 | - | | | |
| | | | 399797G02 | - | 1 | | | |
| 3 | O-RING | | 7616-G040 | 1 | 1 | | | |
| 4 | MECHANICAL SEAL | | 432491-03 | 1 | 1 | | | |
| 5 | RING | | 432494-01 | 1 | 1 | | | |
| 6 | AUGER | | 269909G01 | 1 | 1 | | | |
| 7 | EVAPORATOR | | 241041G01 | 1 | 1 | | | |
| 8 | SCREW | | P01718-01 | 4 | 4 | | | |
| 9 | EXTRUDING HEAD 45F | F301,F301-C002 F301-C003,-C121 F301-C122,-C161 F301-C471 | 327140G03 | 1 | 1 | | | |
| | EXTRUDING HEAD(NUGGET) | F301-C00,-D002 F301-D003,-D121 F301-D122,-D471 | 327141G03 | 1 | 1 | | | |
| 10 | FLANGE/45 | | 464843-01 | 1 | 1 | | | |
| 11 | SEAL BOLT - M8 | | P01768-01 | 3 | 3 | | | |
| 12 | CUTTER | F301,F301-C002 F301-C003,-C121 F301-C122,-C161 F301-C471 | 427137-01 | 1 | 1 | | | |
| | CUTTER | F301-C001,-D002 F301-D003,-D121 F301-D122,-D471 | 440905-01 | 1 | 1 | | | |
| 13 | GEAR MOTOR | | C06977-01 | 1 | 1 | | | |
| 14 | BOLT | | 458660-01 | 4 | 4 | | | |
| 15 | BACKET/GM | | 4C0846M01 | 1 | 1 | | | |
| 16 | TRUSS HEAD SCREW | | FST0408S0 | 2 | 2 | | | |



MODEL: **FM-120KE-50-HC**
FM-120KE-50-HCN

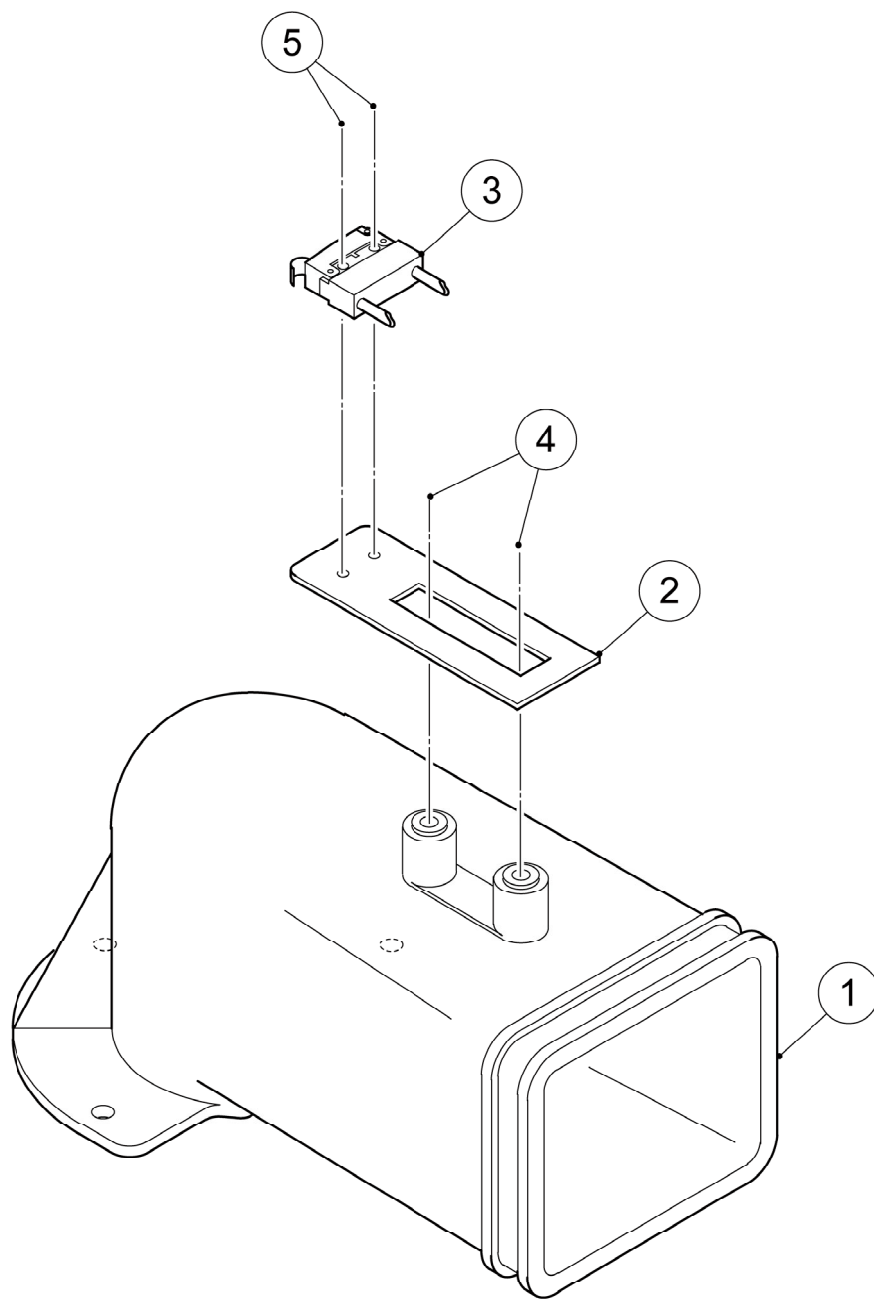
TITLE: **D. WATER CIRCUIT**

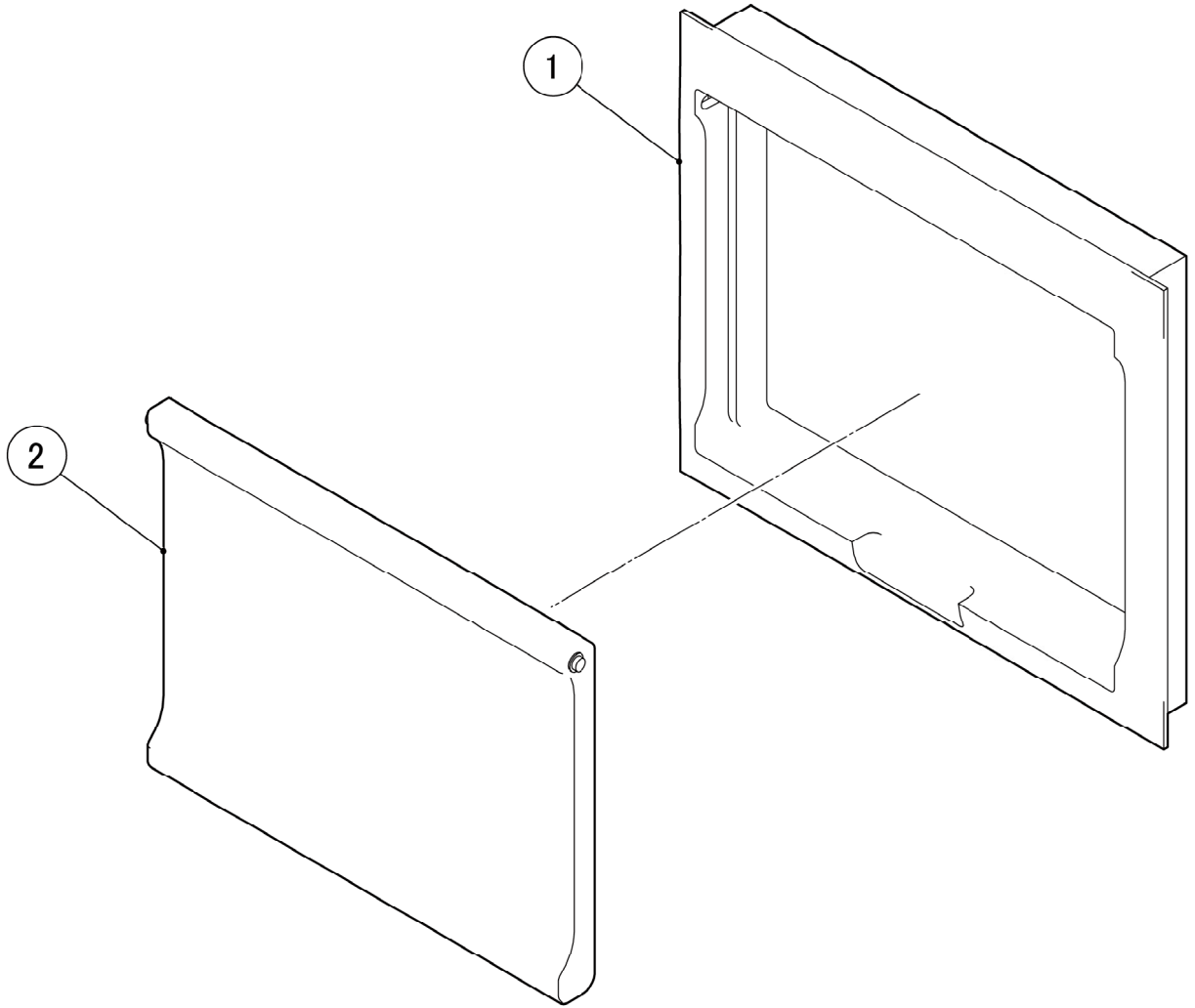
| INDEX NO. | DESCRIPTION | MATERIAL OR MODEL NUMBER | PART NUMBER | REQ'D NUMBER | | | | |
|-----------|-------------------------------|--------------------------|-------------|---------------|--|--|--|--|
| | | | | P-1 and later | | | | |
| 1 | WATER VALVE | | P05353-01 | 1 | | | | |
| 2 | HEX HEAD BOLT | | FBF0408S0 | 2 | | | | |
| 3 | SILICONE HOSE | | 4Y6912R12 | 1 | | | | |
| 4 | PIPE BRACKET | | 3C1087M01 | 1 | | | | |
| 5 | TRUSS HEAD MACHINE SCREW | | FST0408F0 | 4 | | | | |
| 6 | CLAMP | | 428644-03 | 2 | | | | |
| 7 | FLOAT SWITCH | | 458279-01 | 1 | | | | |
| 8 | RESERVIOR BRACKET | | 3C1086M01 | 1 | | | | |
| 9 | TAPER COLLAR | | 4H0171-01 | 1 | | | | |
| 10 | RIVET | SSD43SSBS | 7170-0005 | 1 | | | | |
| 11 | RESERVOIR | | 232626-01 | 1 | | | | |
| 12 | COVER - RESERVOIR | | 232627-01 | 1 | | | | |
| 13 | COVER - RESERVOIR INLET | | 415094-01 | 1 | | | | |
| 14 | WATER SUPPLY PIPE (A) | | 4C0548M01 | 1 | | | | |
| 15 | PACKING - FILTER | | 480202G01 | - | | | | |
| 16 | PVC Hose | | Y12025300 | 1 | | | | |
| 17 | HOSE (A) | | 4E0024R01 | 1 | | | | |
| 18 | DRAIN PAN | | 261640P01 | 1 | | | | |
| 19 | DRAIN PIPE | | 321035-01 | 1 | | | | |
| 20 | PVC Hose | | HD1923340 | 1 | | | | |
| 21 | PVC Hose | | Y12025055 | 1 | | | | |
| 22 | INSULATION TUBE | | H72636B18 | 1 | | | | |
| 23 | TIE | CV-150 | 7920-0003 | 7 | | | | |
| 24 | TRUSS HEAD TAPPING SCREW T2 | | FT20410S0 | 2 | | | | |
| 25 | BRACKET/WV | | 4C0547M01 | 1 | | | | |
| 26 | WATER VALVE | | 468655-01 | - | | | | |
| 27 | DRAIN PIPE | | 460263-01 | 1 | | | | |
| 28 | TRUSS HEAD MACHINE SCREW | | FST0408S0 | 2 | | | | |
| 29 | HEX HEAD BOLT (SPRING WASHER) | | FBK0510S0 | 2 | | | | |
| 30 | PVC Hose - FSA | | HD0912240 | 1 | | | | |
| 31 | HOSE CLAMP | | P05613-02 | 1 | | | | |
| 32 | HOSE CLAMP | | P05613-01 | 1 | | | | |
| 33 | CLIP BAND | | 423866-08 | 1 | | | | |
| 34 | CLAMP | | 423866-04 | 1 | | | | |

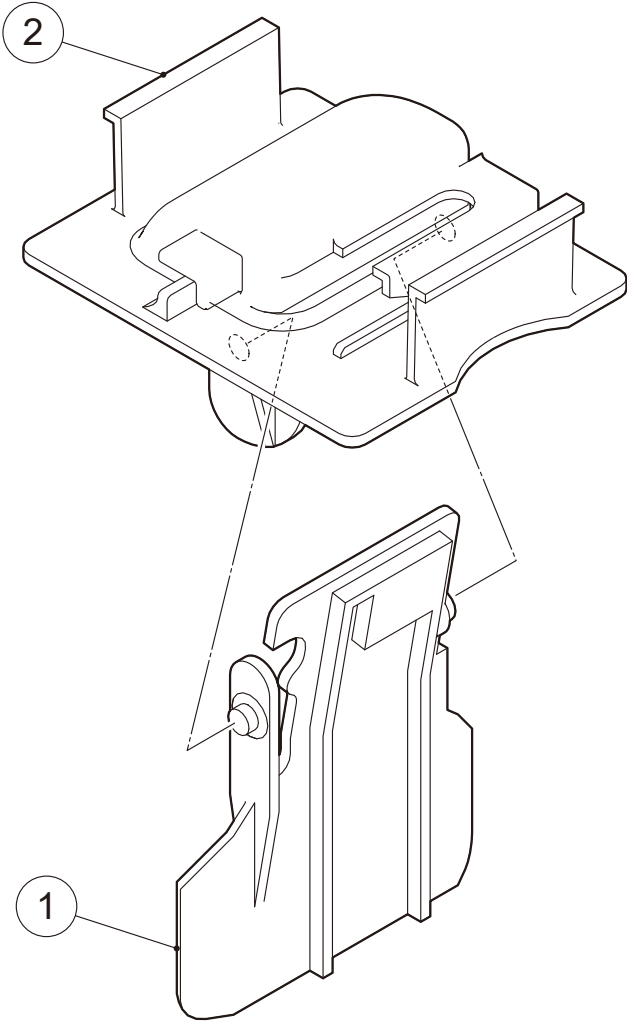
MODEL: **FM-120KE-50-HC**
FM-120KE-50-HCN

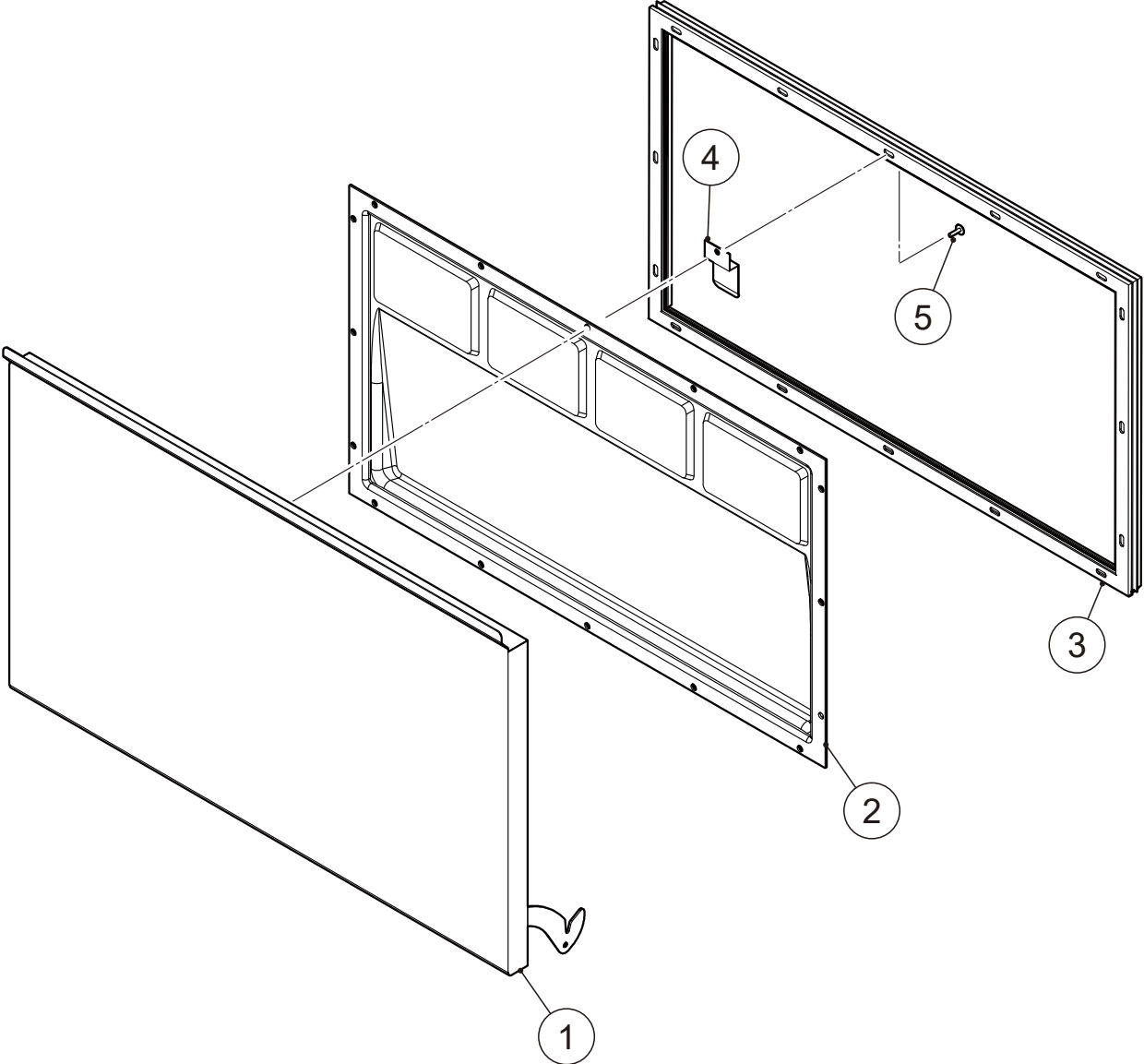
TITLE: **D. WATER CIRCUIT**

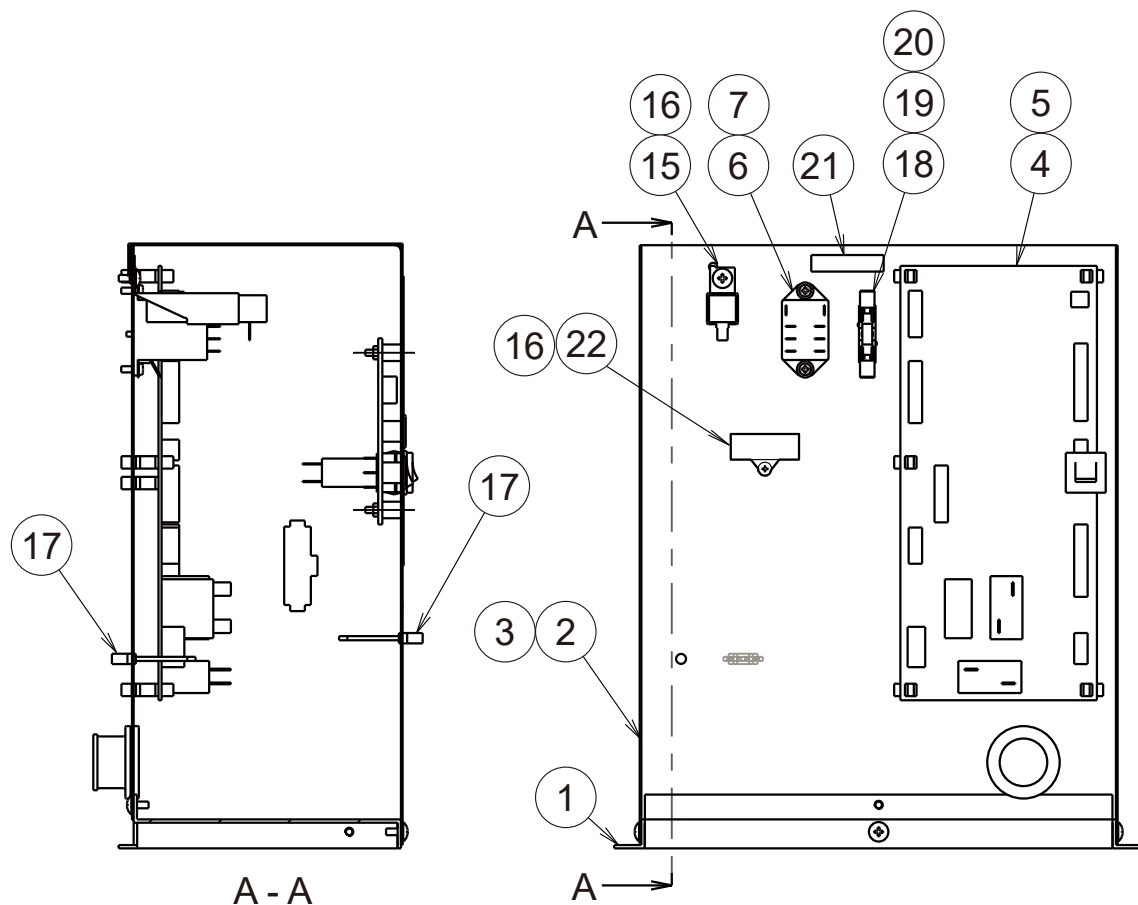
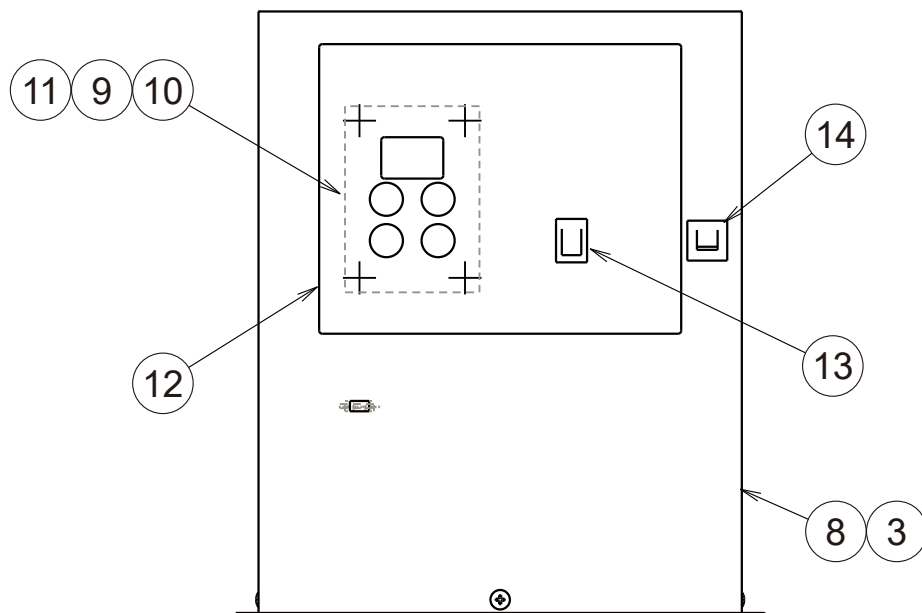
| INDEX NO. | DESCRIPTION | MATERIAL OR MODEL NUMBER | PART NUMBER | REQ'D NUMBER | | | | |
|-----------|------------------|--------------------------|-------------|---------------|--|--|--|--|
| | | | | P-1 and later | | | | |
| 35 | HOSE CLAMP | | P05613-10 | 2 | | | | |
| 36 | NYLON TIE | CV-200 | 7920-0010 | 2 | | | | |
| 37 | DRAIN PIPE | | 476676M01 | 1 | | | | |
| 38 | DRAIN JOINT | | 358882-01 | 1 | | | | |
| 39 | CAP | | 417323-01 | 1 | | | | |
| 40 | WATER VALVE ASSY | | 4C0546G01 | 1 | | | | |







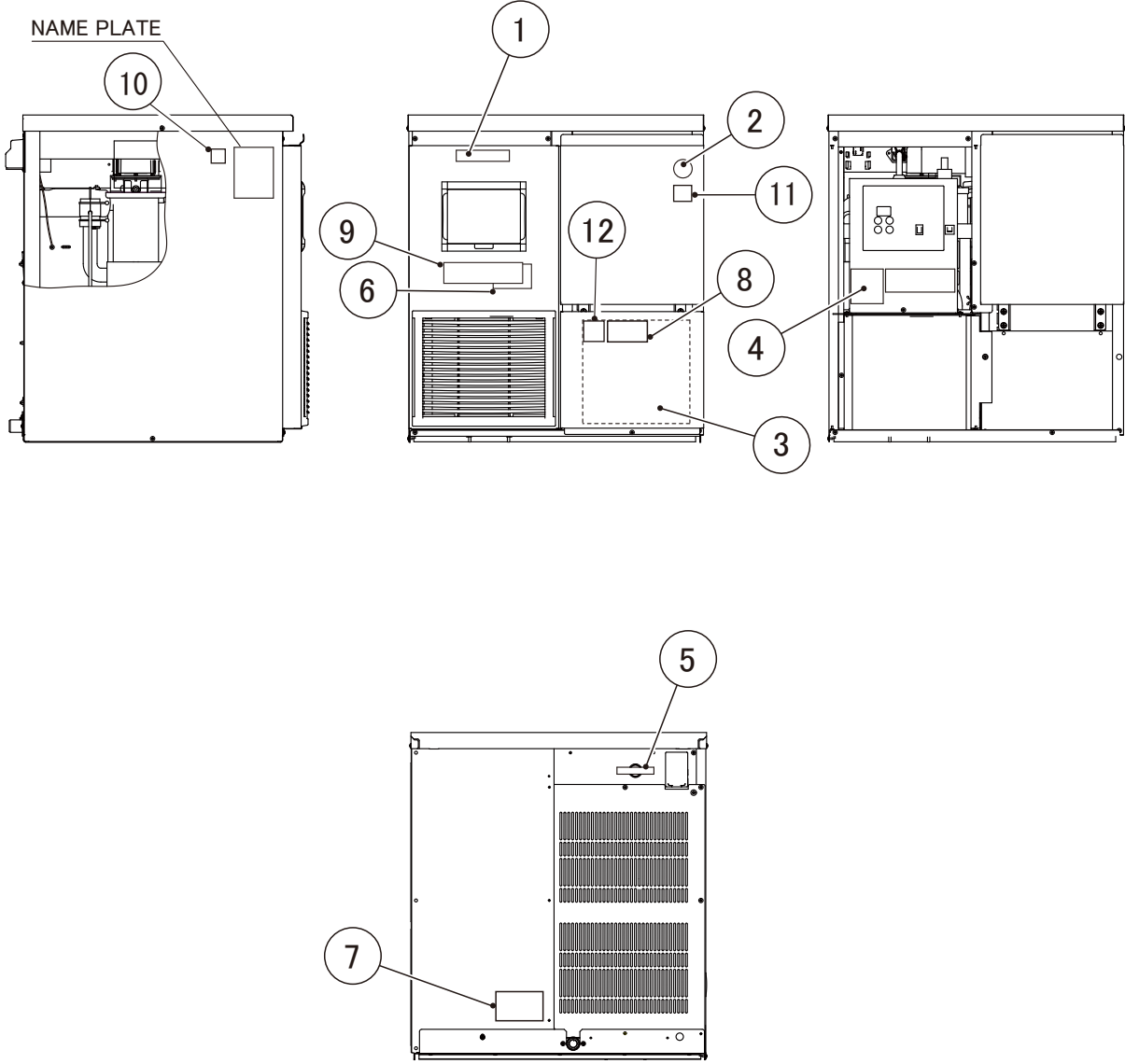




MODEL: **FM-120KE-50-HC**
FM-120KE-50-HCN

TITLE: **J. CONTROL BOX ASSY**

| INDEX NO. | DESCRIPTION | MATERIAL OR MODEL NUMBER | PART NUMBER | REQ'D NUMBER | | | | |
|-----------|---------------------------|--------------------------|-------------|--------------|------------------|--|--|--|
| | | | | P-1 Q-0 | Q-1 and later | | | |
| 1 | CONTROL BOX (A) | | 3C1088M01 | 1 | 1 | | | |
| 2 | CONTROL BOX (B) | | 3C1089M01 | 1 | 1 | | | |
| 3 | TRUSS HEAD MACHINE SCREW | | FST0408F0 | 4 | 4 | | | |
| 4 | CONTROLLER BOARD - 09CM | | P01372-23 | 1 | - | | | |
| | | | P07094-23 | - | 1 | | | |
| 5 | BOARD SUPPORT | KGLS-6S | E00001-01 | 6 | 6 | | | |
| 6 | RELAY | LY2F AC240V | 406132-08 | 1 | 1 | | | |
| 7 | TAPPING SCREW | 3x8 | 431415-01 | 2 | 2 | | | |
| 8 | COVER A - CONT.BOX | | 3C1206G01 | 1 | 1 | | | |
| 9 | SPACER | 4EP-9 | 451658-05 | 4 | 4 | | | |
| 10 | OPERATION BOARD - 09CM | | P01373-01 | 1 | 1 | | | |
| 11 | NUT | | FNH103S0 | 4 | 4 | | | |
| 12 | CONTROL LABEL | | 3C1501L01 | 1 | 1 | | | |
| 13 | ROCKER SWITCH | | 460681-01 | 1 | 1 | | | |
| 14 | PROTECTOR | W28XQIA-6 | 440972-03 | 1 | 1 | | | |
| 15 | SUREGE ABSORBOR | | 436573-02 | 1 | 1 | | | |
| 16 | TRUSS HEAD MACHINE SCREW | SUS 4x8 | FST0408S0 | 2 | 2 | | | |
| 17 | WIRE RETAINER | | 427902-05 | 2 | 2 | | | |
| 18 | FUSE HOLDER | | P06075-01 | 1 | 1 | | | |
| 19 | FUSE | | 451924-02 | 1 | 1 | | | |
| 20 | PAN HEAD TAPPING SCREW T2 | | FT50308F0 | 1 | - | | | |
| | | | FT50308M0 | - | 1 | | | |
| 21 | LABEL/FUSE | | 4C0793L01 | 1 | 1 | | | |
| 22 | CONDENSER | | C06995-01 | 1 | 1 | | | |



MODEL: **FM-120KE-50-HC**
FM-120KE-50-HCN

TITLE: **K. LABEL LOCATION**

| INDEX NO. | DESCRIPTION | MATERIAL OR MODEL NUMBER | PART NUMBER | REQ'D NUMBER | | | | |
|-----------|------------------------------|--|-------------|---------------|--|--|--|--|
| | | | | P-1 and later | | | | |
| 1 | EMBLEM | | 340842-01 | 1 | | | | |
| 2 | LABEL-PENGUIN | | 468184-01 | 1 | | | | |
| 3 | WIRING LABEL | F301,F301-C001 | 2C1292L01 | 1 | | | | |
| | | Except:F301,F301-C001 | 2C1447L01 | 1 | | | | |
| 4 | CAUTION LABEL - SERVICE | | 471180L01 | 1 | | | | |
| 5 | CAUTION-LABEL | | 452552-01 | 1 | | | | |
| 6 | LABEL-REPLACEMENT | | 3C1500L01 | 1 | | | | |
| 7 | CAUTION LABEL - CYCLOPENTANE | | 381437L01 | 1 | | | | |
| 8 | CAUTION LABEL - FIRE(A) | | 3J0417L01 | 1 | | | | |
| 9 | CAUTION LABEL - FIRE(B) | | 3J0418L01 | 1 | | | | |
| 10 | LABEL-REGULATION A | F301,F301-C001 | 482347L01 | 1 | | | | |
| 11 | LABEL-CFC AND HCFC FREE | F301-C002,-D002 | 482091L01 | 1 | | | | |
| 12 | LABEL - ADVISORY | F301-C003,-C121 F301-C122,-C471 F301-D003,-D121 F301-D122,-D471 | 399626L01 | 1 | | | | |
| 13 | LABEL - HACCP | F301-C002,-C003 F301-C121,-C122 F301-C161,-C471 F301-D002,-D003 F301-D121,-D122 F301-D471 | 476519L01 | 1 | | | | |

