



SELF-CONTAINED CUBER

PARTS LIST

[HSU, CHINA, SINGAPORE, ISRAEL, TAIWAN,
PHILIPPINES, SOUTHEAST ASIA, THAILAND
VIETNAM]

M031-C001, -C101, -C102, -C104, -C106, -C107, -C108, -C109
-C110, -C111, -C121, -C122, -C131, -C132, -C151, -C152
-C161, -C162, -C124, -C126, -C171, -C172, -C174, -C175

M032-C001, -C101, -C102, -C104, -C106, -C107, -C108, -C109
-D110, -D111, -C121, -C122, -C131, -C132, -C151, -C152
-C161, -C162, -C124, -C126, -C171, -C172, -C174, -C175
-C176, -C123, -D000, -D001, -D101, -D102, -D106, -D108
-D109, -D121, -D122, -D123, -D131, -D132, -D171, -D172
-D175, -D177, -D178, -D372, -D472

C-1 AUG. 2013
G-1 JUN. 2017
H-1 JUN. 2018
K-1 JAN. 2020
M-1 FEB. 2023

IM-100A
IM-130A
IM-100A-23
IM-130A-23
IM-130A-21
IM-100B
IM-100B-23
IM-100BZ(-23)
IM-130B
IM-130B-23
IM-130BZ(-23)

List of Specifications

IM-100A	M031-C101	For China	100kg
IM-100A-23	M031-C104	For China 23×28×28mm ice cube	100kg
IM-100A	M031-C106	For China Leg : H=90	100kg
IM-100A-23	M031-C107	For China 23×28×28mm ice cube, Leg : H=90	100kg
IM-100A	M031-C121	For Singapore	100kg
IM-100A	M031-C131	For Israel	100kg
IM-100A	M031-C151	For Taiwan 230V,60Hz	100kg
IM-100A	M031-C161	For Philippines 230V,60Hz	100kg
IM-100A-23	M031-C124	For Singapore 23×28×28mm ice cube	100kg
IM-100A	M031-C171	For Southeast Asia	100kg
IM-100A-23	M031-C174	For Southeast Asia 23×28×28mm ice cube	100kg
IM-100A	M031-C001	Door SUS	100kg
IM-100A IM-100B	M031-C102	For China Door SUS	100kg
IM-100A IM-100B	M031-C108	For China Leg : H=90 Door SUS	100kg
IM-100A-23 IM-100B-23	M031-C109	For China Door SUS 23×28×28mm ice cube, Leg : H=90	100kg
IM-100A	M031-C122	For Singapore Door SUS	100kg
IM-100A	M031-C132	For Israel Door SUS	100kg
IM-100A	M031-C152	For Taiwan 230V,60Hz Door SUS	100kg
IM-100A	M031-C162	For Philippines 230V,60Hz Door SUS	100kg
IM-100A-23	M031-C126	For Singapore Door SUS 23×28×28mm ice cube	100kg
IM-100A	M031-C172	For Southeast Asia Door SUS	100kg
IM-100A-23	M031-C175	For Southeast Asia Door SUS 23×28×28mm ice cube	100kg
IM-100B	M031-C177	For HHK Door SUS IOT	100kg
IM-100B-23	M031-C178	For HHK Door SUS IOT 23×28×28mm ice cube	100kg
IM-100BZ	M031-C110	For HSH	100kg
IM-100BZ-23	M031-C111	For HSH	100kg

List of Specifications

IM-130A	M032-C101	For China	130kg
IM-130A-23	M032-C104	For China 23×28×28mm ice cube	130kg
IM-130A	M032-C106	For China Leg : H=90	130kg
IM-130A-23	M032-C107	For China 23×28×28mm ice cube, Leg : H=90	130kg
IM-130A	M032-C121	For Singapore	130kg
IM-130A	M032-C131	For Israel	130kg
IM-130A	M032-C151	For Taiwan 230V,60Hz	130kg
IM-130A	M032-C161	For Philippines 230V,60Hz	130kg
IM-130A-23	M032-C124	For Singapore 23×28×28mm ice cube	130kg
IM-130A	M032-C171	For Southeast Asia	130kg
IM-130A-23	M032-C174	For Southeast Asia 23×28×28mm ice cube	130kg
IM-130A	M032-C001	Door SUS	130kg
IM-130A IM-130B	M032-C102	For China Door SUS	130kg
IM-130A IM-130B	M032-C108	For China Leg : H=90 Door SUS	130kg
IM-130A-23 IM-130B-23	M032-C109	For China Door SUS 23×28×28mm ice cube, Leg : H=90	130kg
IM-130A	M032-C122	For Singapore Door SUS	130kg
IM-130A	M032-C132	For Israel Door SUS	130kg
IM-130A	M032-C152	For Taiwan Door SUS	130kg
IM-130A	M032-C162	For Philippines Door SUS	130kg
IM-130A-23	M032-C126	For Singapore Door SUS 23×28×28mm ice cube	130kg
IM-130A	M032-C172	For Southeast Asia Door SUS	130kg
IM-130A-23	M032-C175	For Southeast Asia Door SUS 23×28×28mm ice cube	130kg
IM-130A-21	M032-C176	For Southeast Asia Door SUS 21×21×14mm ice cube	130kg
IM-130A-21	M032-C123	For Singapore Door SUS 21×21×14mm ice cube	130kg

List of Specifications

IM-130A	M032-D000	Secop Compressor	130kg
IM-130A	M032-D001	Secop Compressor Door SUS	130kg
IM-130A	M032-D101	For CHINA Secop Compressor	130kg
IM-130A IM-130B	M032-D102	For CHINA Secop Compressor Door SUS	130kg
IM-130A	M032-D106	For CHINA Secop Compressor Leg : H=90	130kg
IM-130A IM-130B	M032-D108	For CHINA Secop Compressor Leg : H=90 Door SUS	130kg
IM-130A-23 IM-130B-23	M032-D109	For CHINA Secop Compressor Door SUS 23×28×28mm ice cube, Leg : H=90	130kg
IM-130A	M032-D121	For Singapore Secop Compressor	130kg
IM-130A	M032-D122	For Singapore Secop Compressor Door SUS	130kg
IM-130A-21	M032-D123	For Singapore Secop Compressor Door SUS	130kg
IM-130A	M032-D131	For Israel Secop Compressor	130kg
IM-130A	M032-D132	For Israel Secop Compressor Door SUS	130kg
IM-130A	M032-D171	For Southeast Asia Secop Compressor	130kg
IM-130A	M032-D172	For Southeast Asia Secop Compressor Door SUS	130kg
IM-130A-23	M032-D175	For Southeast Asia Secop Compressor Door SUS	130kg
IM-130B	M032-D177	For HHK Secop Compressor Door SUS IOT	130kg
IM-130B-23	M032-D178	For HHK Secop Compressor Door SUS IOT	130kg
IM-130A	M032-D372	For Thailand Secop Compressor Door SUS	130kg
IM-130A	M032-D472	For Vietnam Secop Compressor Door SUS	130kg
IM-130BZ	M032-D110	FOR HSH	130kg
IM-130BZ-23	M032-D111	FOR HSH	130kg

Auxiliary Codes

Auxiliary Code Breakdown

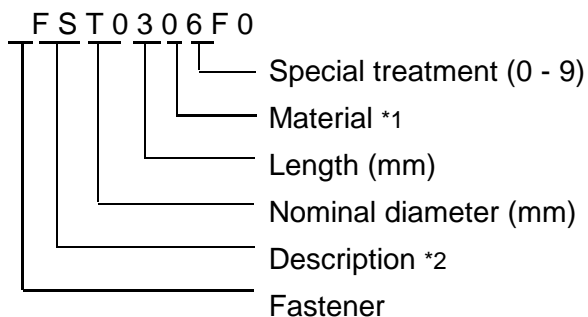
The auxiliary code is the first two characters in the serial number. The first character indicates the year. Years progress or regress in alphabetical order. The series runs from "A" through "V" and the letters "I" and "O" are skipped. The second character indicates significant part changes within a year. Base is "0" and this number advances for each change. In cases where there is a letter in parentheses, this designates the month. This is the last character in the serial number. The series runs from "(A)" through "(M)" and the letter "(I)" is skipped. This designation is only included when identifying a parts change within an auxiliary code.

Note About Ordering Parts

Most assemblies cannot be ordered as complete units; parts in the assemblies generally must be ordered separately.

FASTENER PART NUMBER

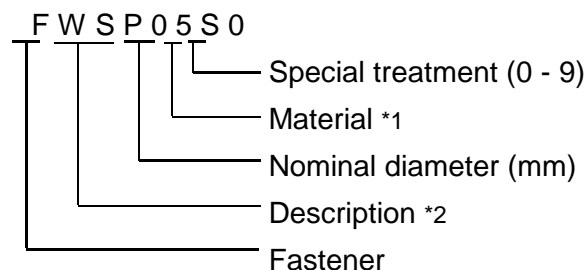
SCREWS



*1

F: Steel
S: Austenitic stainless steel
M: Martensitic stainless steel
B: Copper alloy
P: Polycarbonate
N: Polyamide
V: PVC
A: ABS
X: Polyacetal
L: Aluminum

NUTS & WASHERS



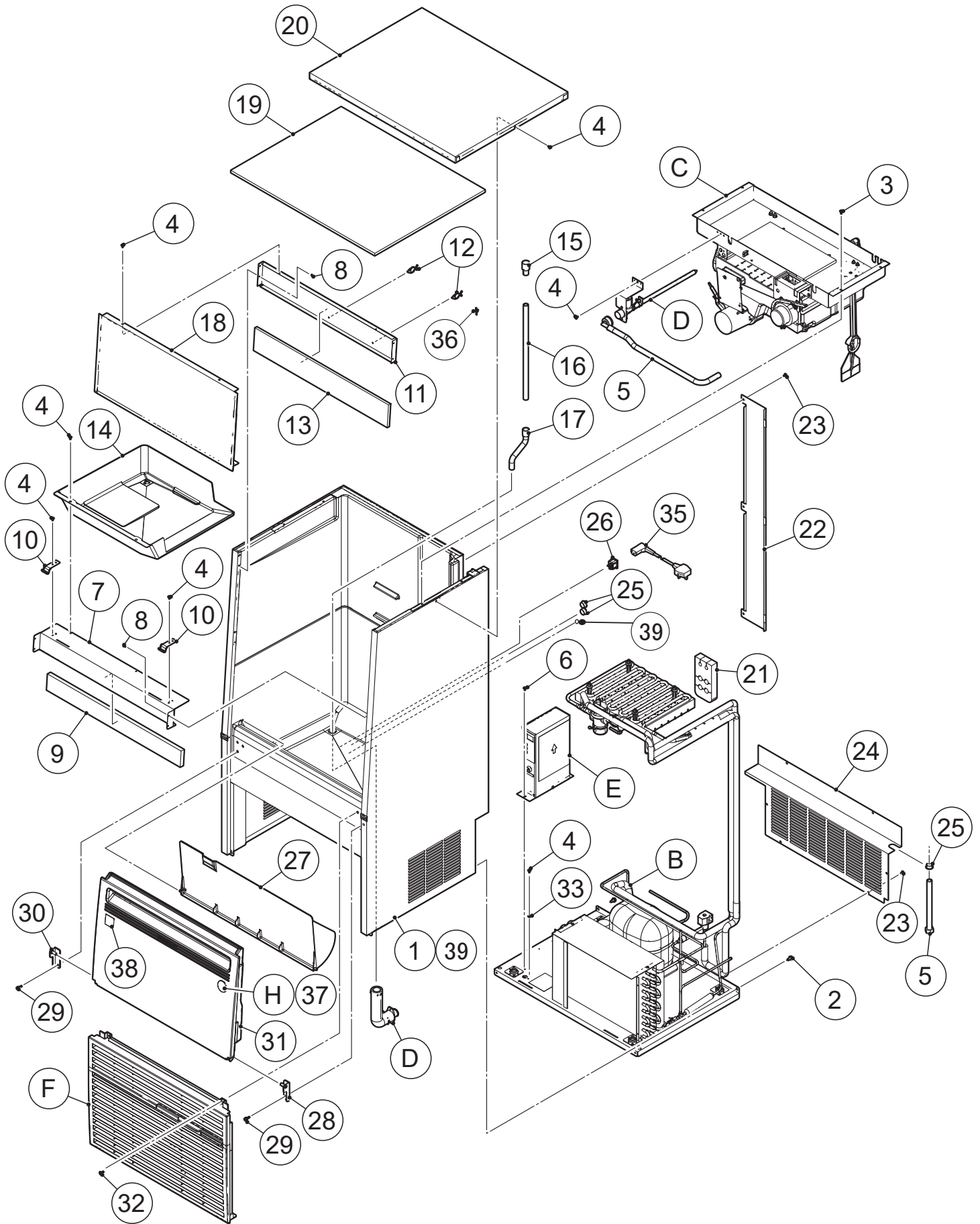
*2

First letter
S: Machine screw
T: Tapping screw
M: Wood screw
B: Bolt
W: Washer
N: Nut

IM-100A (-23)
IM-130A (-23,-21)
IM-100B (-23)
IM-130B (-23,-21)

A. ICE CUBER ASSY

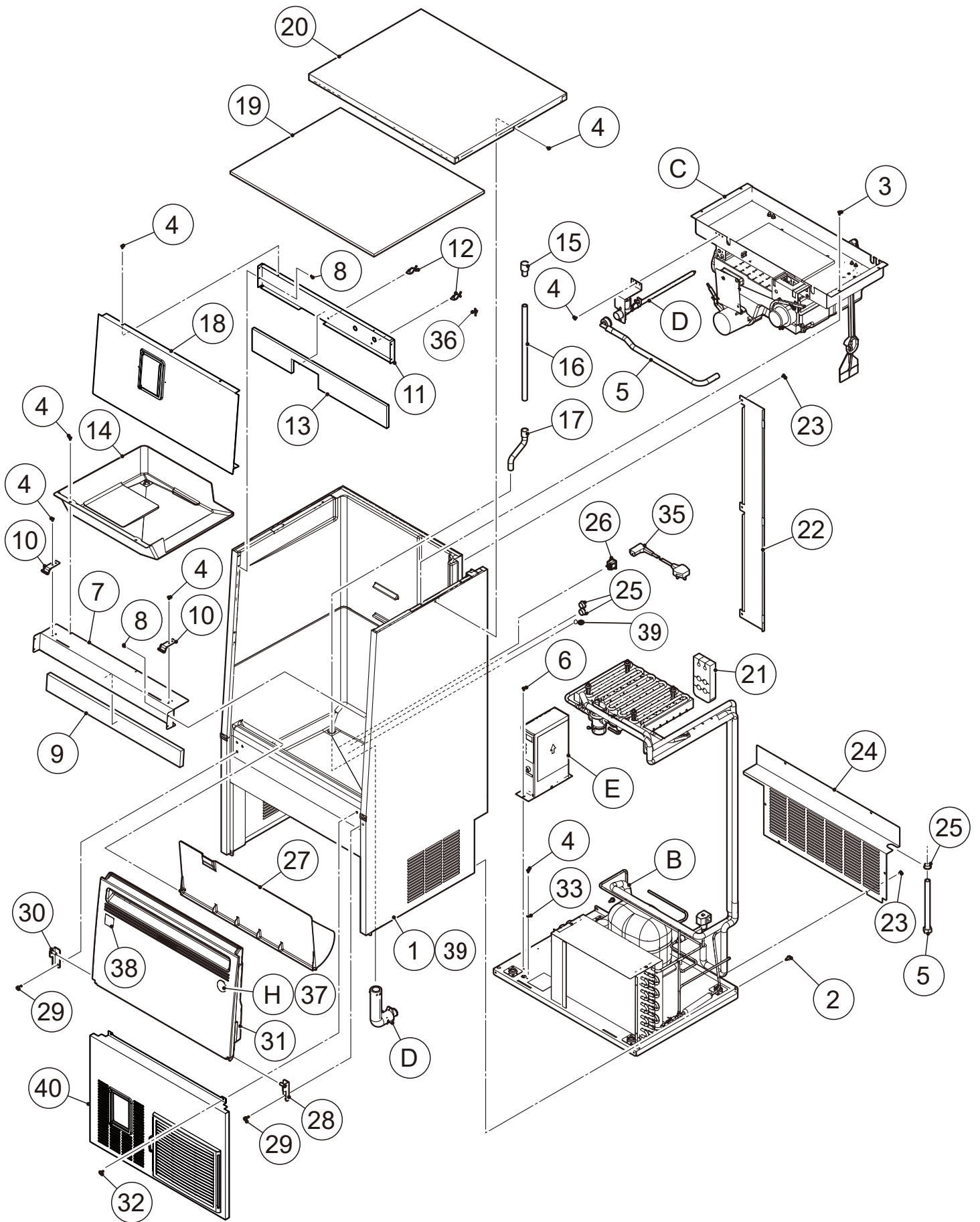
(C-1) and later



IM-100BZ (-23)
IM-130BZ (-23)

A. ICE CUBER ASSY

(C-1) and later



MODEL: **IM-100A (-23)**
IM-100B(Z) (-23)
MODEL: **IM-130A (-23,-21)**
IM-130B(Z) (-23)

TITLE: **A. ICE CUBER ASSY**

INDEX NO.	DESCRIPTION	MATERIAL OR MODEL NUMBER	PART NUMBER	REQ'D NUMBER				
				C-1 G-0	G-1 H-0	H-1 J-0	K-1 M-0	M-1 and later
B	REFRIGERATION ASSY	IM-100A	122747A01	1	-	-	-	-
		IM-100B	123830A01	-	1	1	1	1
		IM-100A-23	122964A01	1	-	-	-	-
		IM-100B-23	122964A02	-	1	1	1	1
		IM-130A, IM-130B	122751A01	1	1	1	1	1
		IM-130A-23,IM-130B-23	122966A01	1	1	1	1	1
		IM-130A-23, IM-130B-23 Secop	122966A02	-	-	-	1	1
		IM-130A 230V,60Hz	124020A01	1	1	1	1	1
		IM-130A-21	1H6193A01	-	-	1	1	1
		IM-130A-21 Secop	1H6193A02	-	-	-	1	1
		IM-130A, IM-130B Secop	122751A02	-	-	-	1	1
		M031-C110	123830002	-	-	-	-	1
		M031-C111	122964001	-	-	-	-	1
		M032-D110	122751001	-	-	-	-	1
M032-D111	122966001	-	-	-	-	1		
C	MECHANISM ASSY		122752A01	1	-	-	-	-
			122752A02	-	1	1	1	1
		IM-130A-21	122752001	-	-	1	1	1
		M031-C110,M031-C111 M032-D110,M032-D111	122752004	-	-	-	-	1
D	WATER CIRCUIT ASSY		264881A01	1	1	1	1	1
		Singapore	264881A01	1	1	-	-	-
			2X3677A01	-	-	1	1	1
E	CONTROL BOX ASSY	IM-100A,IM-100B IM-100A-23,IM-100B-23 IM-130A, IM-130B IM-130A-23, IM-130B-23 IM-130A-21	264882A01	1	1	1	1	1
		IM-130A 230V,60Hz	269490A01	1	1	1	1	1
		M031-C110,M031-C111 M032-D110,M032-D110	264882001	-	-	-	-	1
F	LOUVER ASSY	Except:M031-C110,- C111	378542A01	1	1	1	1	1
		Door SUS Except:M031-C110,- C111	378542A03	1	1	1	1	1
G	FRONT COVER UPPER ASSY	M031-C110,M031-C111 M032-D110,M032-D111	3C0904A01	-	-	-	-	1
H	LABEL LOCATION	IM-100A (English label) Singapore Israel Southeast Asia	264891A01	1	-	-	-	-
		(Except Door SUS)	264891A11	-	1	1	1	1
		IM-100A (English label) Singapore Israel Southeast Asia (Door SUS)	264891009	-	-	1	1	1

MODEL: **IM-100A (-23)**
IM-100B(Z) (-23)
MODEL: **IM-130A (-23,-21)**
IM-130B(Z) (-23)

TITLE: **A. ICE CUBER ASSY**

INDEX NO.	DESCRIPTION	MATERIAL OR MODEL NUMBER	PART NUMBER	REQ'D NUMBER				
				C-1 G-0	G-1 H-0	H-1 J-0	K-1 M-0	M-1 and later
H	LABEL LOCATION	M-130A (English label) Singapore Israel Southeast Asia (Except Door SUS)	264891A02	1	1	1	1	1
		M-130A (English label) Singapore Israel Southeast Asia (Door SUS)	264891004	-	-	1	1	1
		IM-100A China (Except Leg : H=90) (Except Door SUS)	264891A03	1	-	-	-	-
			264891A12	-	1	1	1	1
		IM-100A,IM-100B China (Except Leg : H=90) (Door SUS)	264891008	-	-	1	1	1
		IM-130A China (Except Leg : H=90) (Except Door SUS)	264891A04	1	1	1	1	1
		IM-130A, IM-130B China (Except Leg : H=90) (Door SUS)	264891003	-	-	1	1	1
		IM-100A-23 China (Except Leg : H=90)	264891A05	1	-	-	-	-
			264891A13	-	1	1	1	1
		IM-130A-23 China (Except Leg : H=90)	264891A06	1	1	1	1	1
		IM-100A China (Leg : H=90) (Except Door SUS)	264891A07	1	-	-	-	-
			264891A14	-	1	1	1	1
		IM-100A,IM-100B China (Leg : H=90) (Door SUS)	264891011	-	-	1	1	1
		IM-100A China (Leg : H=90) (Except Door SUS)	264891A08	1	1	1	1	1
		IM-100A,IM-130B China (Leg : H=90) (Door SUS)	264891005	-	-	1	1	1
		IM-100A-23 China (Leg : H=90) (Except Door SUS)	264891A09	1	-	-	-	-
			264891A15	-	1	1	1	1
		IM-100A-23 China IM-100B-23 China (Leg : H=90) (Door SUS)	264891012	-	-	1	1	1
		IM-130A-23 China (Leg : H=90) (Except Door SUS)	264891A10	1	1	1	1	1
		IM-130A-23, IM-130B-23 China (Leg : H=90) (Door SUS)	264891006	-	-	1	1	1
IM-100A Taiwan, Philippines (230V,60Hz) (Except Door SUS)	264891001	1	1	1	1	1		

MODEL: **IM-100A (-23)**
IM-100B(Z) (-23)
MODEL: **IM-130A (-23,-21)**
IM-130B(Z) (-23)

TITLE: **A. ICE CUBER ASSY**

INDEX NO.	DESCRIPTION	MATERIAL OR MODEL NUMBER	PART NUMBER	REQ'D NUMBER				
				C-1 G-0	G-1 H-0	H-1 J-0	K-1 M-0	M-1 and later
H	LABEL LOCATION	M-100A Taiwan, Philippines (230V,60Hz) (Door SUS)	264891014	-	-	1	1	1
		IM-130A Taiwan, Philippines (230V,60Hz) (Except Door SUS)	269763A01	1	1	1	1	1
		IM-130A Taiwan, Philippines (230V,60Hz) (Door SUS)	269763001	-	-	1	1	1
		IM-100A-23 Singapore Southeast Asia (Except Door SUS)	264891A16	-	1	1	1	1
		IM-100A-23 Singapore Southeast Asia (Door SUS)	264891013	-	-	1	1	1
		IM-130A-23 Singapore Southeast Asia (Except Door SUS)	264891A17	-	1	1	1	1
		IM-130A-23 Singapore Southeast Asia (Door SUS)	264891007	-	-	1	1	1
		IM-130A-21 Singapore Southeast Asia (Door SUS)	264891015	-	-	1	1	1
		IM-130A Secop Except China (Except Leg : H=90) (Except Door SUS)	264891A18	-	-	-	1	1
		IM-130A Secop Except China (Door SUS) (Except Leg : H=90)	264891016	-	-	-	1	1
		IM-130A Secop China (Except Leg : H=90) (Except Door SUS)	264891A19	-	-	-	1	1
		IM-130A, IM-130B Secop China (Door SUS) (Except Leg : H=90)	264891017	-	-	-	1	1
		IM-130A Secop China (Leg : H=90) (Except Door SUS)	264891A20	-	-	-	1	1
		IM-130A, IM-130B Secop China (Leg : H=90) (Door SUS)	264891018	-	-	-	1	1
		IM-130A-23, IM-130B-23 Secop China (Leg : H=90) (Door SUS)	264891019	-	-	-	1	1
IM-130A-21 Secop Singapore(Door SUS)	264891020	-	-	-	1	1		

MODEL: **IM-100A (-23)**
IM-100B(Z) (-23)
MODEL: **IM-130A (-23,-21)**
IM-130B(Z) (-23)

TITLE: **A. ICE CUBER ASSY**

INDEX NO.	DESCRIPTION	MATERIAL OR MODEL NUMBER	PART NUMBER	REQ'D NUMBER				
				C-1 G-0	G-1 H-0	H-1 J-0	K-1 M-0	M-1 and later
H	LABEL LOCATION	IM-130A-23 Secop Southeast Asia (Door SUS)	264891021	-	-	-	1	1
		IM-100B HHK	264891032	-	-	-	-	1
		IM-100B-23 HHK	264891033	-	-	-	-	1
		IM-130B	264891031	-	-	-	-	1
		IM-130B-23	264891030	-	-	-	-	1
		M032-D110	264891034	-	-	-	-	1
		M032-D111	264891035	-	-	-	-	1
		M031-C111	264891036	-	-	-	-	1
		M031-C110	264891037	-	-	-	-	1
Q	ACCESSORIES		A02758-01	1	1	1	1	1
		China (Except Leg : H=90)	A02758001	1	1	1	1	1
		Leg : H=90	A02758002	1	1	1	1	1
		IM-100B(-23) HHK IM-130B(-23) HHK	A02758007	-	-	-	-	1
		M031-C110,M031-C111 M032-D110,M032-D111	A02758010	-	-	-	-	1
1	UNIT BODY		122746G01	1	1	1	1	1
		IM-100B IM-100B-23 IM-130B IM-130B-23 M031-C110,M031-C111 M032-D110,M032-D111	122746001	-	-	-	-	1
		IM-100B(-23) HHK IM-130B(-23) HHK	122476002	-	-	-	-	1
2	HEX. TAPPING SCREW W - FLANGE		P01572-01	4	4	4	4	4
3	TRUSS HEAD SCREW		FST0410S0	4	4	4	4	4
4	TRUSS HEAD SCREW		FST0408S0	13	13	13	13	13
5	INLET HOSE		P03089-01	1	1	1	1	1
6	TRUSS HEAD SCREW		FST0408F0	1	1	1	1	1
		M031-C110,M031-C111 M032-D110,M032-D111		-	-	-	-	2
7	FRONT FRAME (B)		264884M01	1	1	1	1	1
8	RIVET	SSD42SSBS(t1.6~3.2)	7170-0005	8	8	8	8	8
9	INSULATION - FRONT FRAME		478659P01	1	1	1	1	1
10	DOOR HOOK		478636M01	2	2	2	2	2
11	FRONT FRAME		378469M01	1	1	1	1	1
		M031-C110,M031-C111 M032-D110,M032-D111	3C1701M01	-	-	-	-	1
12	WIRE RETAINER	No.4253	427902-05	2	2	2	2	2
13	INSULATION - FRONT FRAME		478637P01	1	1	1	1	1
		M031-C110,M031-C111 M032-D110,M032-D111	4C0893P01	-	-	-	-	1

MODEL: **IM-100A (-23)**
IM-100B(Z) (-23)
MODEL: **IM-130A (-23,-21)**
IM-130B(Z) (-23)

TITLE: A. ICE CUBER ASSY

INDEX NO.	DESCRIPTION	MATERIAL OR MODEL NUMBER	PART NUMBER	REQ'D NUMBER				
				C-1 G-0	G-1 H-0	H-1 J-0	K-1 M-0	M-1 and later
14	DRAIN PAN		2H1935-01	1	1	1	1	1
15	DRAIN TUBE		4H2585-01	1	1	1	1	1
16	DRAIN PIPE		478638P01	1	1	1	1	1
17	DRAIN HOSE (A)		486192R01	1	1	1	1	1
18	FRONT COVER UPPER ASSY	Except:M031-C110,- C111	378470G01	1	1	1	1	1
19	INSULATION-TOP PANEL		378473P01	1	1	1	1	1
20	TOP PANEL		122753M01	1	1	1	1	1
21	INSULATION (B)		478641P01	1	1	1	1	1
22	COVER - PIPE		264889M01	1	1	1	1	1
23	T2 TRUSS HEAD SCREW		FT20408F0	9	9	9	9	9
24	REAR COVER		264890M01	1	1	1	1	1
25	BUSHING		428394-04	3	3	3	3	3
26	CONNECTOR		P02656-01	1	1	1	1	1
27	SLOPE		264869P01	1	1	1	1	1
28	HINGE (R)		378474G01	1	1	1	1	1
29	HEX HEAD BOLT (SPRING WASHER AND FLAT WASHER)		FBK0516S0	4	4	4	4	4
30	HINGE (L)		378476G01	1	1	1	1	1
31	DOOR		378499G01	1	1	1	1	1
		SUS(Except Leg : H=90) (Including A-NO.37,.38)	388276G01	-	-	1	1	1
		SUS (Leg : H=90) (Including A-NO.37)	388276G02	-	-	1	1	1
		M031-C110,M031-C111 M032-D110,M032-D111	388276G03	-	-	-	-	1
32	TRUSS HEAD MACHINE SCREW		FST0512S0	2	2	2	2	2
33	SPRING WASHER		FWSP04S0	1	1	1	1	1
34	-		-	-	-	-	-	-
35	POWER CORD	China	P01960-01	1	1	1	1	1
		Singapore Southeast Asia	P02795-01	1	1	1	1	1
		Israel	P02794-01	1	1	1	1	1
		Taiwan	P01257-01	1	1	1	1	1
		Philippines	C06039-01	1	1	1	1	1
		Thailand	P03994-01	-	-	-	1	1
		Vietnam	C06074-01	-	-	-	1	1
36	TIE	Except 230V,60Hz	7920-0002	1	1	1	1	1
37	LABEL - PENGUIN	Door SUS	468184-03	-	-	1	1	1
38	LABEL - HACCP	Door SUS Except:M031-C110,- C111	476519L02	-	-	1	1	1

MODEL: **IM-100A (-23)**
IM-100B(Z) (-23)
MODEL: **IM-130A (-23,-21)**
IM-130B(Z) (-23)

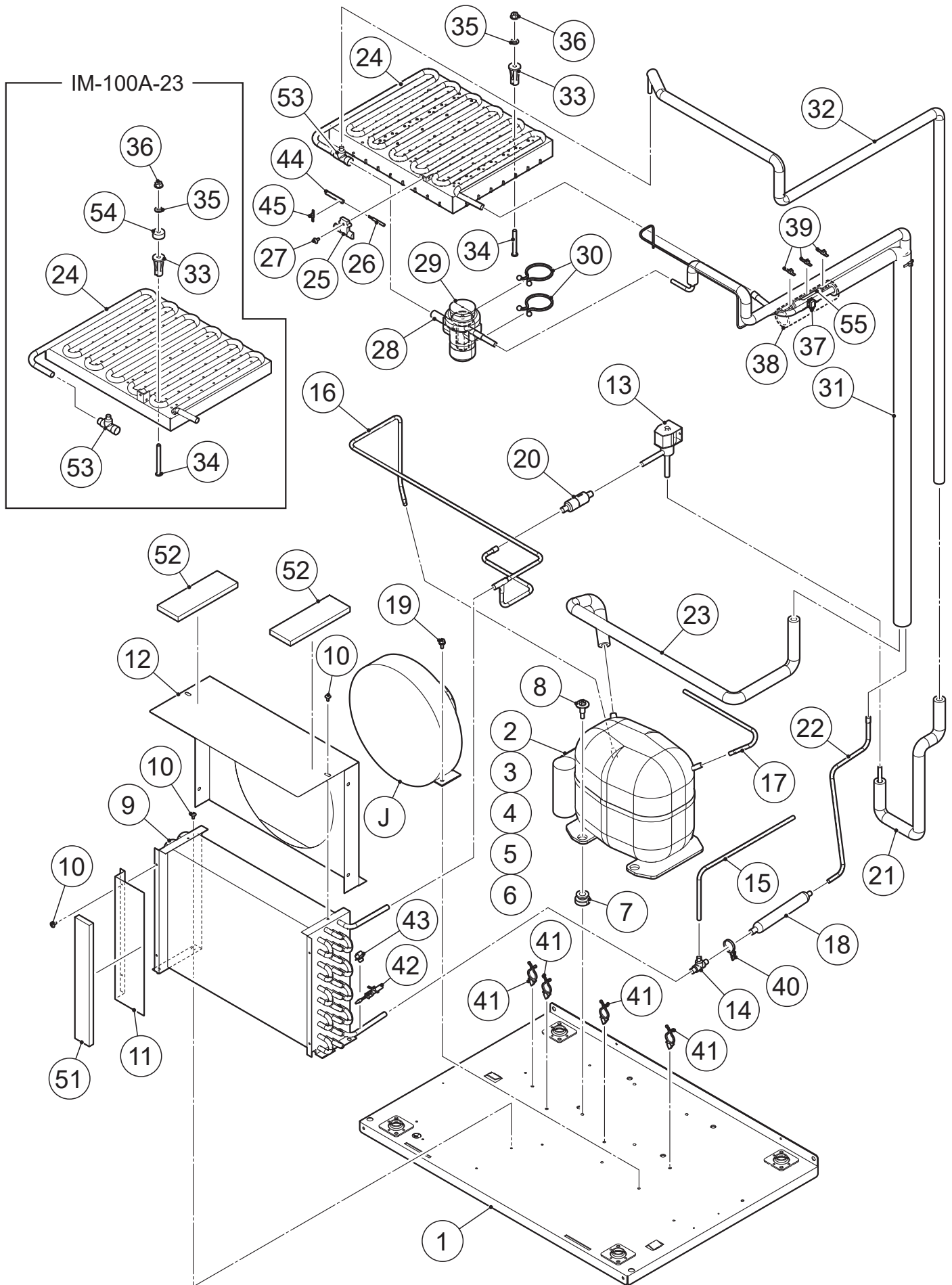
TITLE: **A. ICE CUBER ASSY**

INDEX NO.	DESCRIPTION	MATERIAL OR MODEL NUMBER	PART NUMBER	REQ'D NUMBER				
				C-1 G-0	G-1 H-0	H-1 J-0	K-1 M-0	M-1 and later
39	GROMMET	IM-100B IM-100B-23 IM-130B IM-130B-23 M031-C110,M031-C111 M032-D110,M032-D111	410666-02	-	-	-	-	1
40	FRONT PANEL LO	M031-C110,M031-C111 M032-D110,M032-D111	3C0940G01	-	-	-	-	1

IM-100A(-23)
IM-130A Secop
IM-100B(-23)
IM-130B Secop

B. REFRIGERATION ASSY

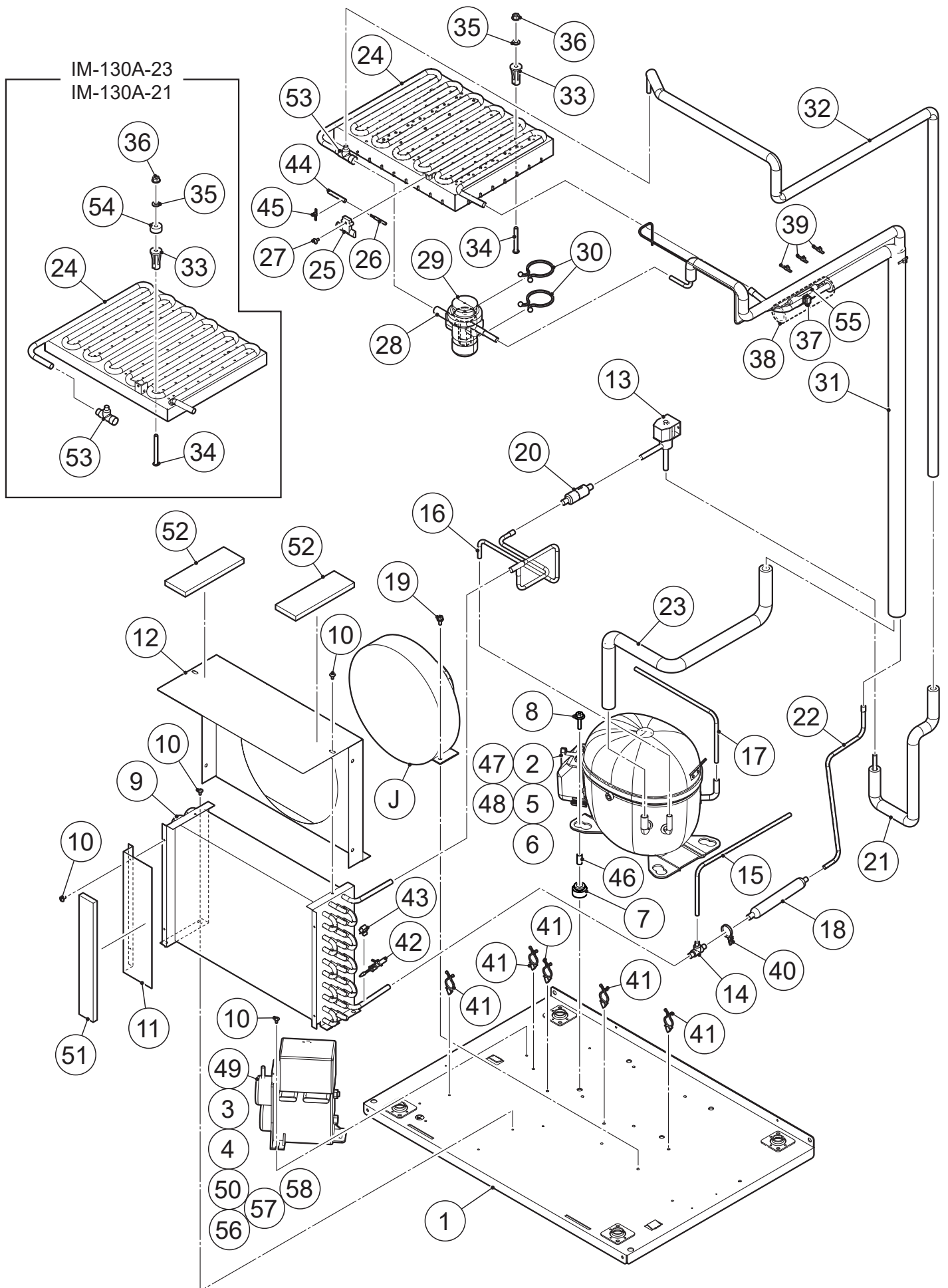
(C-1) and later

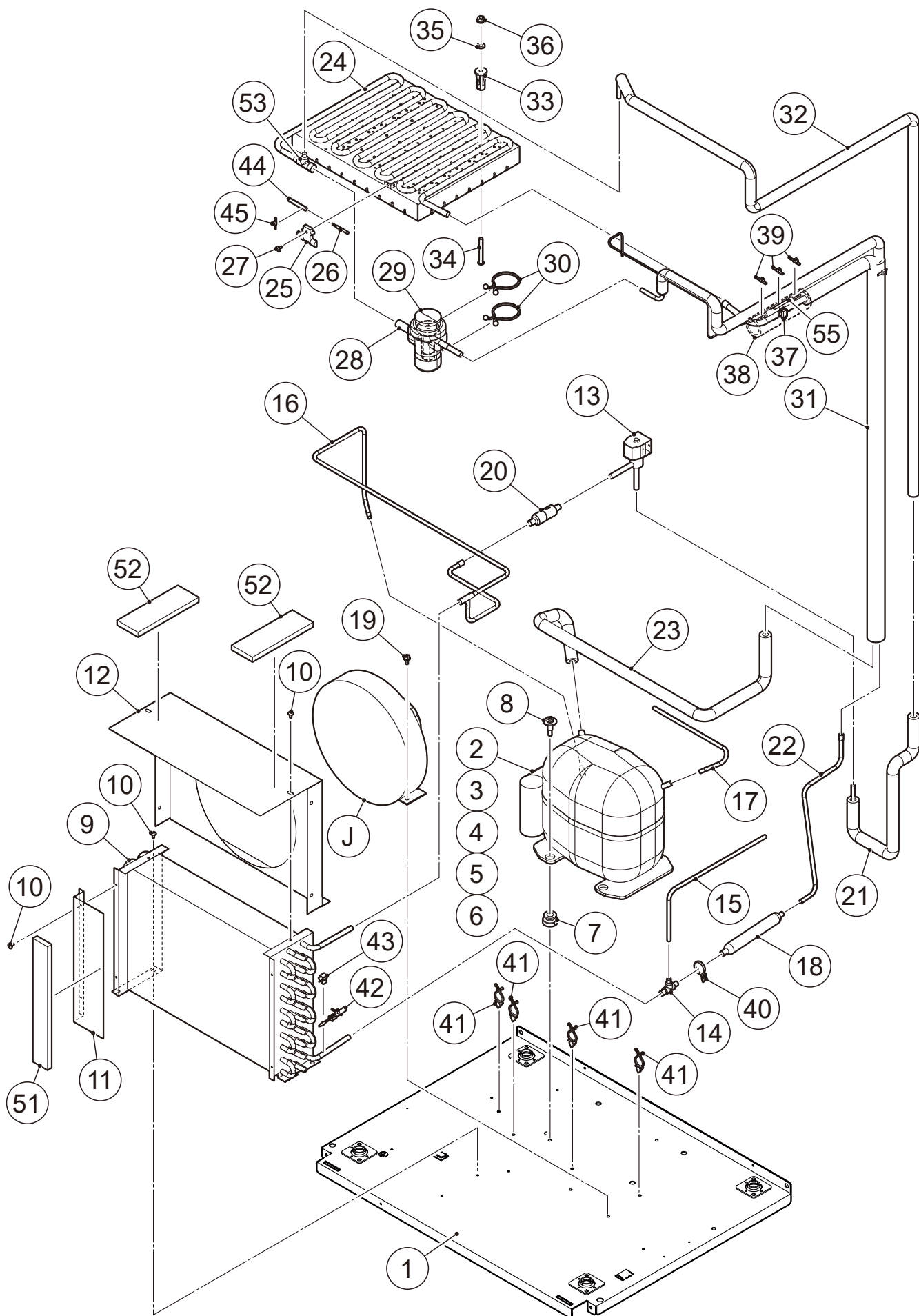


IM-130A (-23,-21)
IM-130B (-23)
Except Secop

B. REFRIGERATION ASSY

(C-1) and later





MODEL: **IM-100A (-23)**
IM-100B(Z) (-23)
MODEL: **IM-130A (-23,-21)**
IM-130B(Z) (-23)

TITLE: B. REFRIGERATION CIRCUIT

INDEX NO.	DESCRIPTION	MATERIAL OR MODEL NUMBER	PART NUMBER	REQ'D NUMBER				
				C-1 G-0	G-1 H-0	H-1 J-0	K-1 M-0	M-1 and later
J	FAN MOTOR ASSY		378440A01	1	1	1	1	1
1	BASE (G)	IM-100A, IM-100B IM-100A-23,IM-100B-23 IM-130A ,IM-130B IM-130A-23, IM-130B-23 IM-130A-21	378437G01	1	1	1	1	1
		IM-130A 230V,60Hz	382470G01	1	1	1	1	1
		M031-C110,M031-C111 M032-D110,M032-D111	3C1612G01	-	-	-	-	1
2	COMPRESSOR	IM-100A, IM-100A-23 IM-100B, IM-100B-23 M031-C110,M031-C111	P01055-01	1	-	-	-	-
			P03941-01	-	1	1	1	1
		IM-100A 230V,60Hz	P03941-01	1	1	1	1	1
		IM-130A, IM-130B IM-130A-23, IM-130B-23 IM-130A-21	P00835-01	1	1	1	1	1
		IM-130A 230V,60Hz	P03995-01	1	1	1	1	1
		IM-130A, IM-130B Secop IM-130A-23, IM-130B-23 Secop IM-130A-21 Secop M032-D110, M032-D111	P01018-01	-	-	-	1	1
3	STARTER	IM-100A, IM-100A-23 IM-100B, IM-100B-23	455607-01	1	-	-	-	-
	STARTING RELAY	M031-C110,M031-C111	P03942-01	-	1	1	1	1
	STARTING RELAY	IM-100A 230V,60Hz	P03942-01	1	1	1	1	1
	STARTER	IM-130A,IM-130B IM-130A-21, IM-130A-23 IM-130B-23 (Except 230V,60Hz)	P00842-01	1	1	1	1	1
	STARTING RELAY	IM-130A, IM-130B Secop IM-130A-23, IM-130B-23 Secop IM-130A-21 Secop M032-D110,M032-D111	452237-01	-	-	-	1	1
4	START CAPACITOR	IM-100A, IM-100B IM-100A-23, IM-100B-23 IM-130A, IM-130B Secop IM-130A-23, IM-130B-23 Secop IM-130A-21 Secop M031-C110,M031-C111 M032-D110,M032-D111	456350-01	1	1	1	1	1
		IM-130A, IM-130B IM-130A-21, IM-130A-23, IM-130B-23	P00844-01	1	1	1	1	1
		IM-130A 230V,60Hz	P03998-01	1	1	1	1	1

MODEL: **IM-100A (-23)**
IM-100B(Z) (-23)
MODEL: **IM-130A (-23,-21)**
IM-130B(Z) (-23)

TITLE: B. REFRIGERATION CIRCUIT

INDEX NO.	DESCRIPTION	MATERIAL OR MODEL NUMBER	PART NUMBER	REQ'D NUMBER				
				C-1 G-0	G-1 H-0	H-1 J-0	K-1 M-0	M-1 and later
5	CORD RELIEF	IM-100A, IM-100B IM-100A-23, IM-100B-23 IM-130A, IM-130B Secop IM-130A-23, IM-130B-23 Secop IM-130A-21 Secop M031-C110,M031-C111 M032-D110,M032-D111	452239-01	1	1	1	1	1
	SCREW	IM-130A, IM-130A-23 IM-130A-21, IM-130B-23	P00840-01	1	1	1	1	1
6	COVER	IM-100A, IM-100B IM-100A-23, IM-100B-23 M031-C110,M031-C111	459924-01	1	-	-	-	-
			P01179-01	-	1	1	1	1
		IM-100A 230V,60Hz	P01179-01	1	1	1	1	1
	TERMINAL COVER	IM-130A, IM-130B IM-130A-21 IM-130A-23, IM-130B-23	P02814-01	1	1	1	1	1
	COVER	IM-130A, IM-130B Secop IM-130A-23, IM-130B-23 Secop IM-130A-21 Secop M032-D110,M032-D111	459924-01	-	-	-	1	1
7	GROMMET	IM-100A, IM-100B IM-100A-23, IM-100B-23 IM-130A, IM-130B Secop IM-130A-23, IM-130B-23 Secop IM-130A-21 Secop M031-C110,M031-C111 M032-D110,M032-D111	450897-01	4	4	4	4	4
		IM-130A, IM-130B IM-130A-21 IM-130A-23, IM-130B-23	P00846-01	4	4	4	4	4
	RUBBER GROMMET	IM-130A 230V,60Hz	P04000-01	4	4	4	4	4
8	BOLT	IM-130A, IM-130B IM-130A-21 IM-130A-23, IM-130B-23	436206-03	4	4	4	4	4
		IM-100A, IM-100B IM-100A-23, IM-100B-23 IM-130A, IM-130B Secop IM-130A-23, IM-130B-23 Secop IM-130A-21 Secop M031-C110,M031-C111 M032-D110,M032-D111	C05825-01	-	-	-	2	2
9	CONDENSER-AIR COOLED		P03075-01	1	1	1	1	1
10	T2 TRUSS HEAD SCREW	IM-100A, IM-100B IM-100A-23, IM-100B-23 IM-130A 230V,60Hz IM-130A, IM-130B Secop IM-130A-23, IM-130B-23 Secop IM-130A-21 Secop M031-C110,M031-C111 M032-D110,M032-D111	FT20408F0	12	12	12	12	12
		IM-130A, IM-130B IM-130A-21 IM-130A-23, IM-130B-23		14	14	14	14	14

MODEL: **IM-100A (-23)**
IM-100B(Z) (-23)
MODEL: **IM-130A (-23,-21)**
IM-130B(Z) (-23)

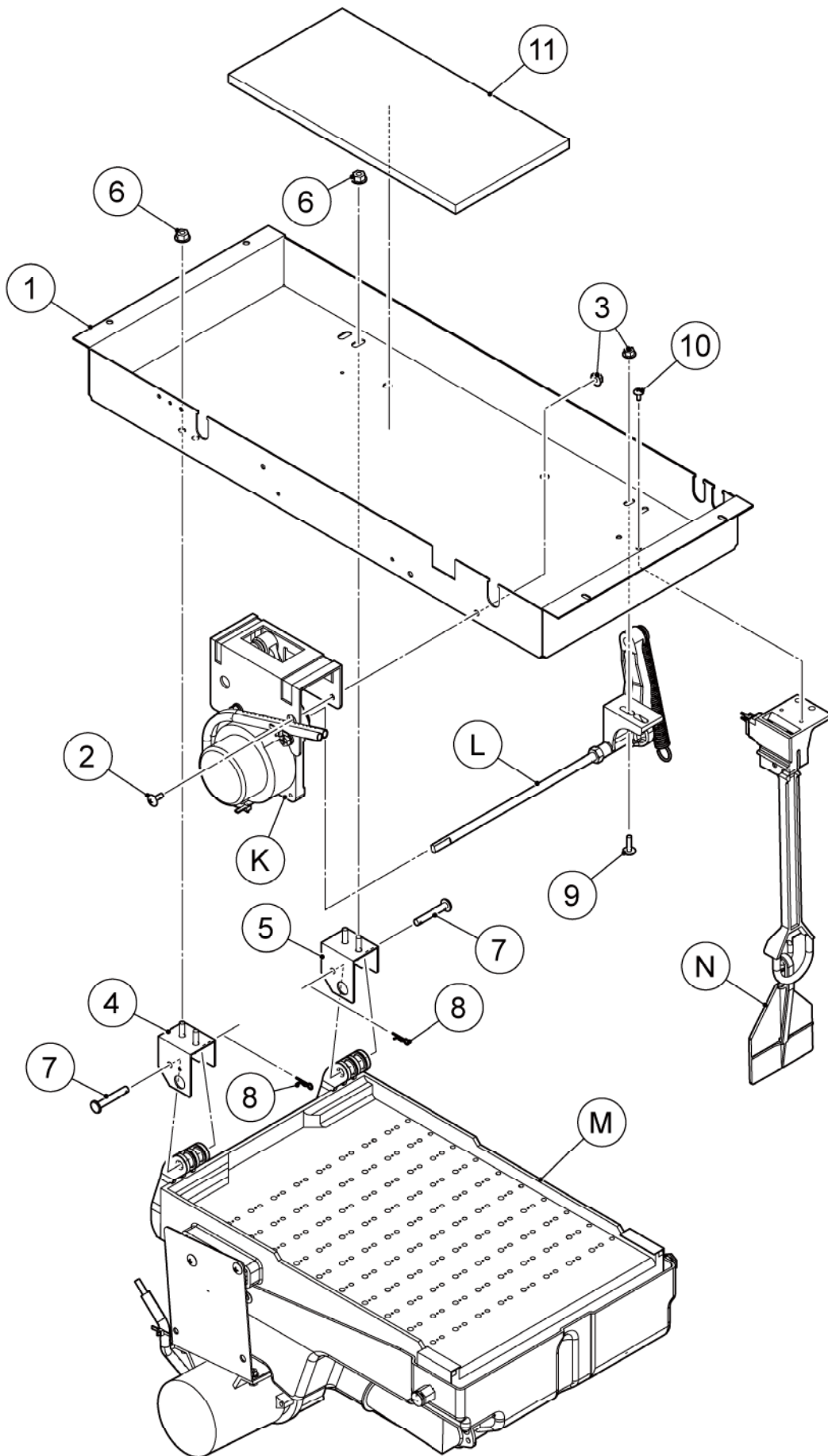
TITLE: B. REFRIGERATION CIRCUIT

INDEX NO.	DESCRIPTION	MATERIAL OR MODEL NUMBER	PART NUMBER	REQ'D NUMBER				
				C-1 G-0	G-1 H-0	H-1 J-0	K-1 M-0	M-1 and later
11	DUCT		478625M01	1	1	1	1	1
12	SHROUD		378439M01	1	1	1	1	1
13	HOT GAS VALVE		P04242-01	1	1	1	1	1
14	TEE		439140-02	1	1	1	1	1
15	PROCESS TUBE		478626M01	1	1	1	1	1
16	COPPER TUBE - HOT GAS	IM-100A, IM-100A-23 IM-100B, IM-100B-23 M031-C110,M031-C111	378441G01	1	1	1	1	-
			382070G01	-	-	-	-	1
		IM-100A 230V,60Hz IM-130A, IM-130B Secop IM-130A-23, IM-130B-23 Secop	382070G01	1	1	1	-	-
		IM-130A-21 Secop M032-D110,M032-D111	382070G02	-	-	-	1	1
		IM-130A, IM-130B IM-130A-21 IM-130A-23, IM-130B-23	378452G01	1	1	1	1	1
		IM-130A 230V,60Hz	382471G01	1	1	1	1	1
17	COPPER TUBE - ACCESS VALVE	IM-100A, IM-100A-23 IM-100B, IM-100B-23 M031-C110,M031-C111	478628M01	1	-	-	-	-
			481393M01	-	1	1	1	1
		IM-100A 230V,60Hz	481393M01	1	1	1	1	1
		IM-130A, IM-130B Secop IM-130A-23, IM-130B-23 Secop	481393M02	-	-	-	1	1
		IM-130A-21 Secop M032-D110,M032-D111						
	IM-130A, IM-130B IM-130A-21 IM-130A-23, IM-130B-23	478629M01	1	1	1	1	1	
	PROCESS TUBE	IM-130A 230V,60Hz	478826M01	1	1	1	1	1
18	DRIER		P00026-01	1	1	1	1	1
19	HEX HEAD BOLT (SPRING WASHER AND FLAT WASHER)	IM-100A, IM-100B M031-C110	FBK0512S0	2	-	-	-	-
			FBK0512F0	-	2	2	2	2
		IM-100A-23, IM-100B-23 IM-130A, IM-130B IM-130A-21	FBK0512S0	2	2	2	-	-
		IM-130A-23, IM-130B-23 M031-C111,M032-D110 M032-D111	FBK0512F0	-	-	-	2	2
		IM-130A 230V,60Hz	FBK0512F0	2	2	2	2	2
20	STRAINER		P00812-01	1	1	1	1	1
21	COPPER TUBE (C) - HOT GAS		378448G01	1	-	-	-	-
			382070G01	-	1	1	1	1
22	COPPER TUBE(C) - HIGH SIDE		378444M01	1	1	1	1	1

MODEL: **IM-100A (-23)**
IM-100B(Z) (-23)
MODEL: **IM-130A (-23,-21)**
IM-130B(Z) (-23)

TITLE: B. REFRIGERATION CIRCUIT

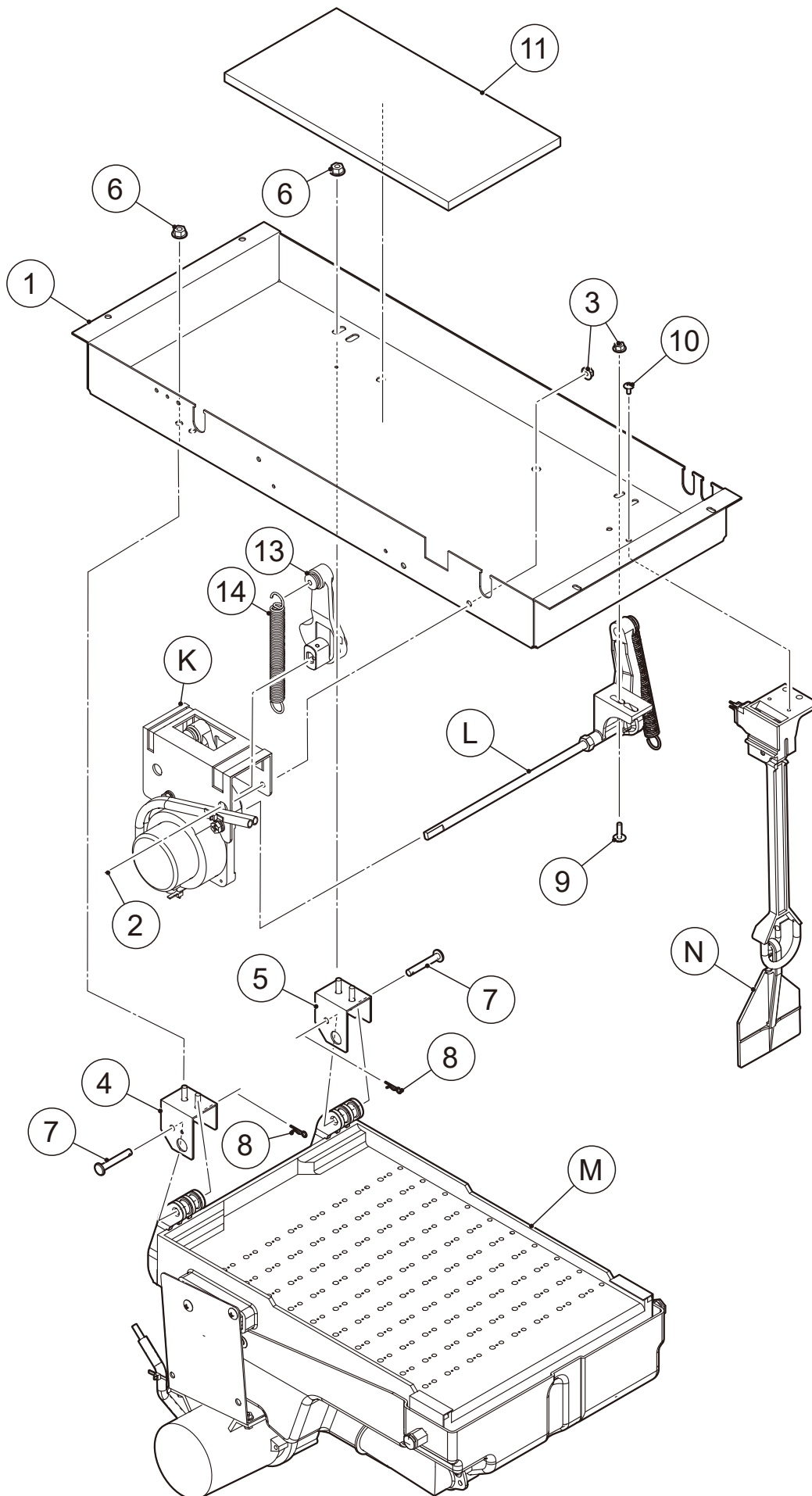
INDEX NO.	DESCRIPTION	MATERIAL OR MODEL NUMBER	PART NUMBER	REQ'D NUMBER				
				C-1 G-0	G-1 H-0	H-1 J-0	K-1 M-0	M-1 and later
23	COPPER TUBE (B) - LOW SIDE	IM-100A, IM-100A-23 IM-100B, IM-100B-23 M031-C110,M031-C111	378450G01	1	1	1	1	1
		IM-130A, IM-130B Secop IM-130A-23, IM-130B-23 Secop IM-130A-21 Secop M032-D110,M032-D111	378450G02	-	-	-	1	1
	PIPE(B) - LOW SIDE	IM-130A,IM-130B IM-130A-23, IM-130B-23 IM-130A-21	378454G01	1	1	1	1	1
	COPPER TUB (B) - LOW SIDE	IM-130A 230V,60Hz	382473G01	1	1	1	1	1
24	EVAPORATOR		2H6438G03	1	1	1	1	1
	EVAPORATOR 23MM	IM-100A-23, IM-100B-23 IM-130A-23, IM-130B-23 M031-C111	2H1836G01	1	1	1	1	1
	EVAPORATOR 21MM	IM-130A-21	2H0716G03	-	-	1	1	1
25	HOLDER - THERMISTOR		3H9642-01	1	1	1	1	1
26	THERMISTOR - CUBE COTROL		P00350-01	1	1	1	1	1
27	S-TITE TRUSS HEAD SCREW		FTS0408M0	1	1	1	1	1
28	EXPANSION VALVE		P02546-01	1	1	1	1	1
29	VALVE COVER		3Y3051P01	1	1	1	1	1
30	CLAMP		P00752-01	2	2	2	2	2
31	HEAT EXCHANGER		122750G01	1	1	1	1	1
		IM-100A-23, IM-100B-23 IM-130A-23, IM-130B-23 M031-C111	122965G01	1	1	1	1	1
		IM-130A-21	1H6194G01	-	-	1	1	1
32	COPPER TUBE(D) - HOT GAS		378451G01	1	1	1	1	1
		IM-100A-23, IM-100B-23 IM-130A-23, IM-130B-23 IM-130A-21,M031-C111	265811G01	1	1	1	1	1
33	COLLAR		3H3879-01	4	4	4	4	4
34	SCREW EVAPORATOR		4Y4922M02	4	4	4	4	4
		IM-100A-23, IM-100B-23 IM-130A-23, IM-130B-23 IM-130A-21,M031-C111	4Y4922M03	4	4	4	4	4
35	WASHER		4H0777-01	4	4	4	4	4
36	FLANGE NUT		FNHF06S0	4	4	4	4	4
37	CLAMP		443461-01	1	1	1	1	1
38	INSULATION TUBE	Except IM-130A-21 Secop	H82535120	2	2	2	2	2
39	TIE		7920-0003	3	3	3	3	3
40	CLAMP		427902-02	1	1	1	1	1
41	WIRE RETAINER		427902-05	4	4	4	4	4



IM-100A (-23)
IM-100B(Z) (-23)
IM-130A (-23,-21)
IM-130B(Z) (-23)

C. MECHANISM ASSY

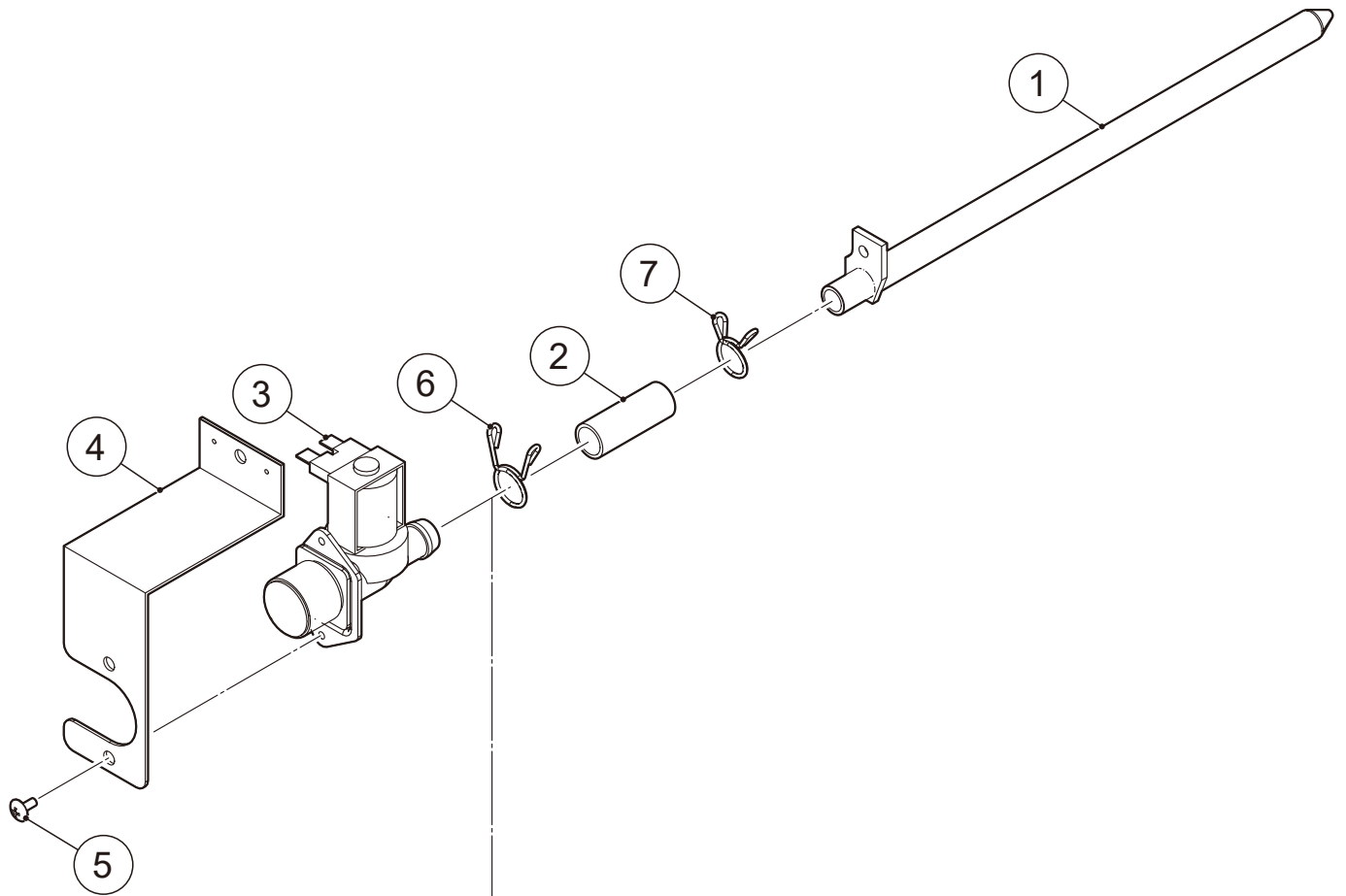
(G-1) and later



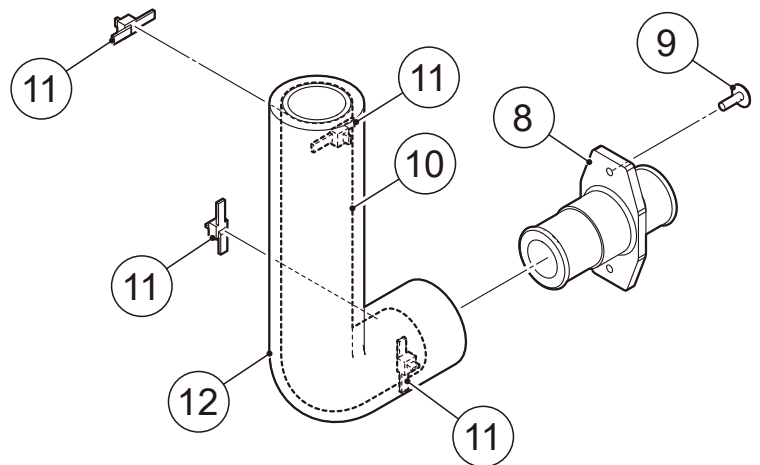
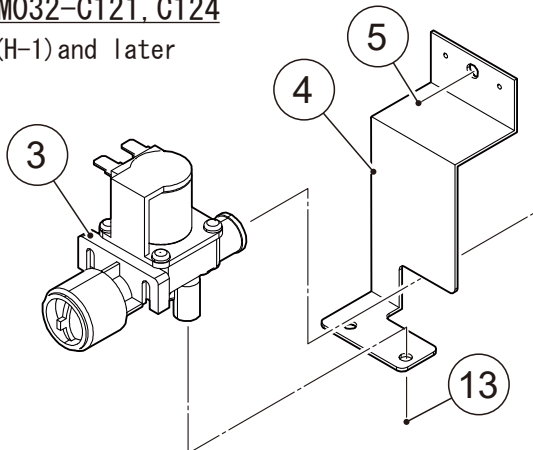
IM-100A (-23)
IM-100B(Z) (-23)
IM-130A (-23,-21)
IM-130B(Z) (-23)

D. WATER CIRCUIT ASSY

(C-1) and later



M031-C121, C124
M032-C121, C124
(H-1) and later



MODEL: **IM-100A (-23)**
IM-100B(Z) (-23)
MODEL: **IM-130A (-23,-21)**
IM-130B(Z) (-23)

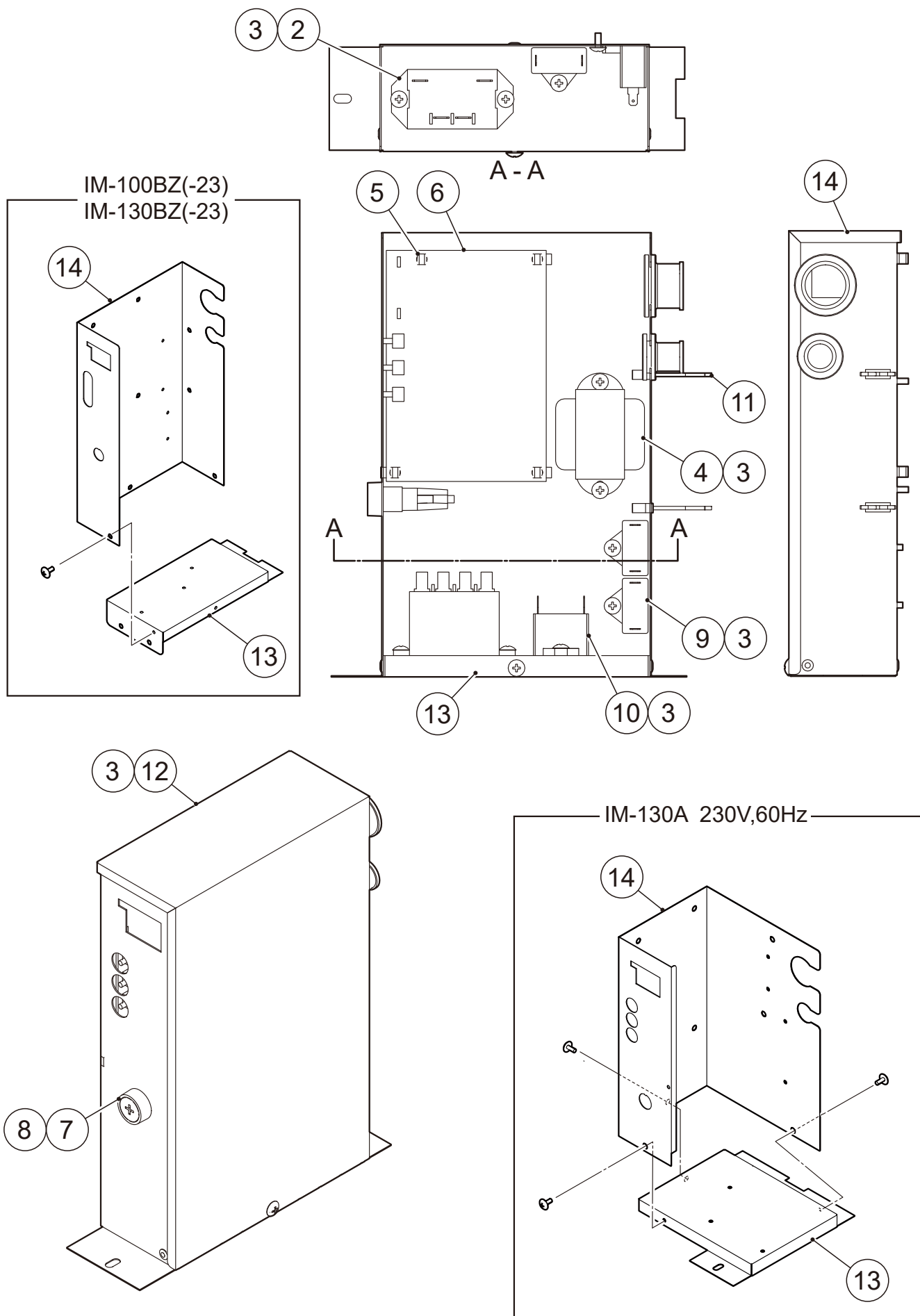
TITLE: D. WATER CIRCUIT ASSY

INDEX NO.	DESCRIPTION	MATERIAL OR MODEL NUMBER	PART NUMBER	REQ'D NUMBER				
				C-1 G-0	G-1 H-0	H-1 J-0	K-1 M-0	M-1 and later
1	WATER SUPPLY PIPE		378461G01	1	1	1	1	1
2	SILICONE HOSE		264881-02	1	1	1	-	-
			H11215040	-	-	-	1	1
3	WATER VALVE	Singapore	P02056-01	1	1	1	1	1
			P02056-01	1	1	-	-	-
			P04823-01	-	-	1	1	1
4	BRACKET - WV	Singapore	478635M01	1	1	1	1	1
			478635M01	1	1	-	-	-
			4Z0430M01	-	-	1	1	1
5	TRUSS HEAD SCREW		FST0408S0	2	2	2	2	2
6	HOSE CLAMP		435934-03	1	1	1	-	-
			P05613-02	-	-	-	1	1
7	HOSE CLAMP		435934-02	1	1	1	-	-
			P05613-01	-	-	-	1	1
8	PIPE DRAIN		369099P01	1	1	1	1	1
9	T2 TRUSS HEAD SCREW	DOOR SUS	FT20408S0	2	2	2	2	2
10	DRAIN HOSE		391364R01	1	1	1	1	1
11	TIE	CV-150	7920-0003	4	4	4	4	4
12	INSULATION TUBE		H72636185	1	1	1	1	1
13	T2 TRUSS HEAD SCREW	Singapore	FT20408S0	-	-	2	2	2

IM-100A (-23)
IM-100B (-23)
IM-130A (-23,-21)
IM-130B (-23)

E. CONTROL BOX ASSY

(C-1) and later



MODEL: **IM-100A (-23)**
IM-100B(Z) (-23)
MODEL: **IM-130A (-23,-21)**
IM-130B(Z) (-23)

TITLE: E. CONTROL BOX ASSY

INDEX NO.	DESCRIPTION	MATERIAL OR MODEL NUMBER	PART NUMBER	REQ'D NUMBER				
				C-1 G-0	G-1 H-0	H-1 J-0	K-1 M-0	M-1 and later
1	-	-	-	-	-	-	-	-
2	POWER RELAY		P00034-01	1	1	1	1	1
		EXCEPT M131-C101,M131-C104 M131-C106,M131-C107 M131-C121,M131-C124 M131-C131,M131-C151 M131-C161,M131-C171 M131-C174,M132-C101 M132-C104,M132-C106 M132-C107,M132-C121 M132-C124,M132-C126 M132-C131,M132-C151 M132-C152,M132-C161 M132-C171,M132-C174 M132-D101,M132-D106 M132-D121,M132-D131 M132-D171	C06306-01	-	-	-	-	1
3	TRUSS HEAD TAPPING SCREW T2		FT20408F0	11	11	11	11	11
4	TRANSFORMER		P00012-01	1	1	1	1	1
5	BOARD SUPPORT		414929-02	4	4	4	4	4
6	CONTROLLER BOARD		P01873-01	1	1	1	1	1
		M031-C110,M031-C111 M032-D110,M032-D111	P01873-03	-	-	-	-	1
7	FUSE HOLDER		P00014-01	1	1	1	1	1
8	FUSE		P00015-01	1	1	1	1	1
9	CAPACITOR		P01870-01	2	2	2	2	2
10	CAPACITOR		P01910-01	1	1	1	1	1
11	WIRE RETAINER	No.4253	427902-05	2	2	2	2	2
12	CONTROL BOX COVER	IM-100A, IM-100B IM-100A-23, IM-100B-23 IM-130A, IM-130B IM-130A-21 IM-130A-23, IM-130B-23	378463M01	1	1	1	1	1
		IM-130A 230V,60Hz	383240M01	1	1	1	1	1
		M031-C110,M031-C111 M032-D110,M032-D111	3C1730M01	-	-	-	-	1
13	CONTROL BOX(B)	IM-100A, IM-100B IM-100A-23, IM-100B-23 IM-130A, IM-130B IM-130A-21 IM-130A-23, IM-130B-23	378690M01	1	1	1	1	1
		IM-130A 230V,60Hz	383239M01	1	1	1	1	1
		M031-C110,M031-C111 M032-D110,M032-D111	3C1609M01	-	-	-	-	1

MODEL: **IM-100A (-23)**
IM-100B(Z) (-23)
MODEL: **IM-130A (-23,-21)**
IM-130B(Z) (-23)

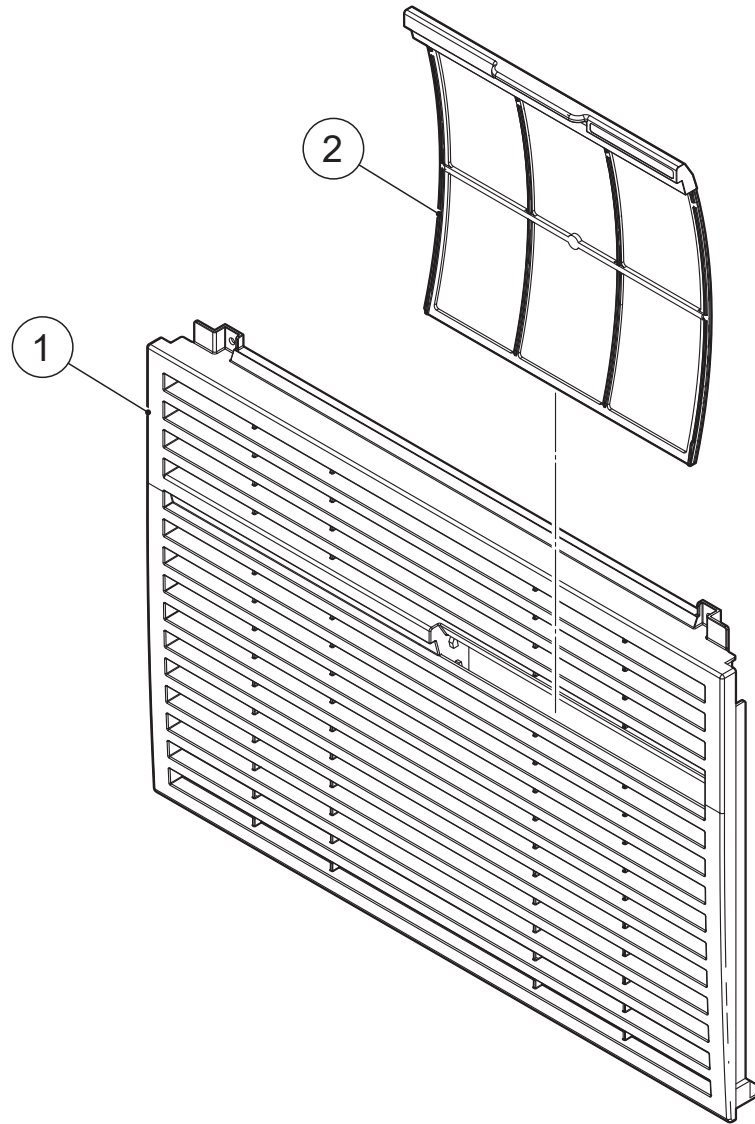
TITLE: E. CONTROL BOX ASSY

INDEX NO.	DESCRIPTION	MATERIAL OR MODEL NUMBER	PART NUMBER	REQ'D NUMBER				
				C-1 G-0	G-1 H-0	H-1 J-0	K-1 M-0	M-1 and later
14	CONTROL BOX(A)	IM-100A, IM-100B IM-100A-23, IM-100B-23 IM-130A, IM-130B IM-130A-21 IM-130A-23, IM-130B-23	265060M01	1	1	1	1	1
		IM-130A 230V,60Hz	269491M01	1	1	1	1	1
		M031-C110,M031-C111 M032-D110,M032-D111	2C2022M01	-	-	-	-	1

IM-100A (-23)
IM-100B (-23)
IM-130A (-23,-21)
IM-130B (-23)

F. LOUVER ASSY

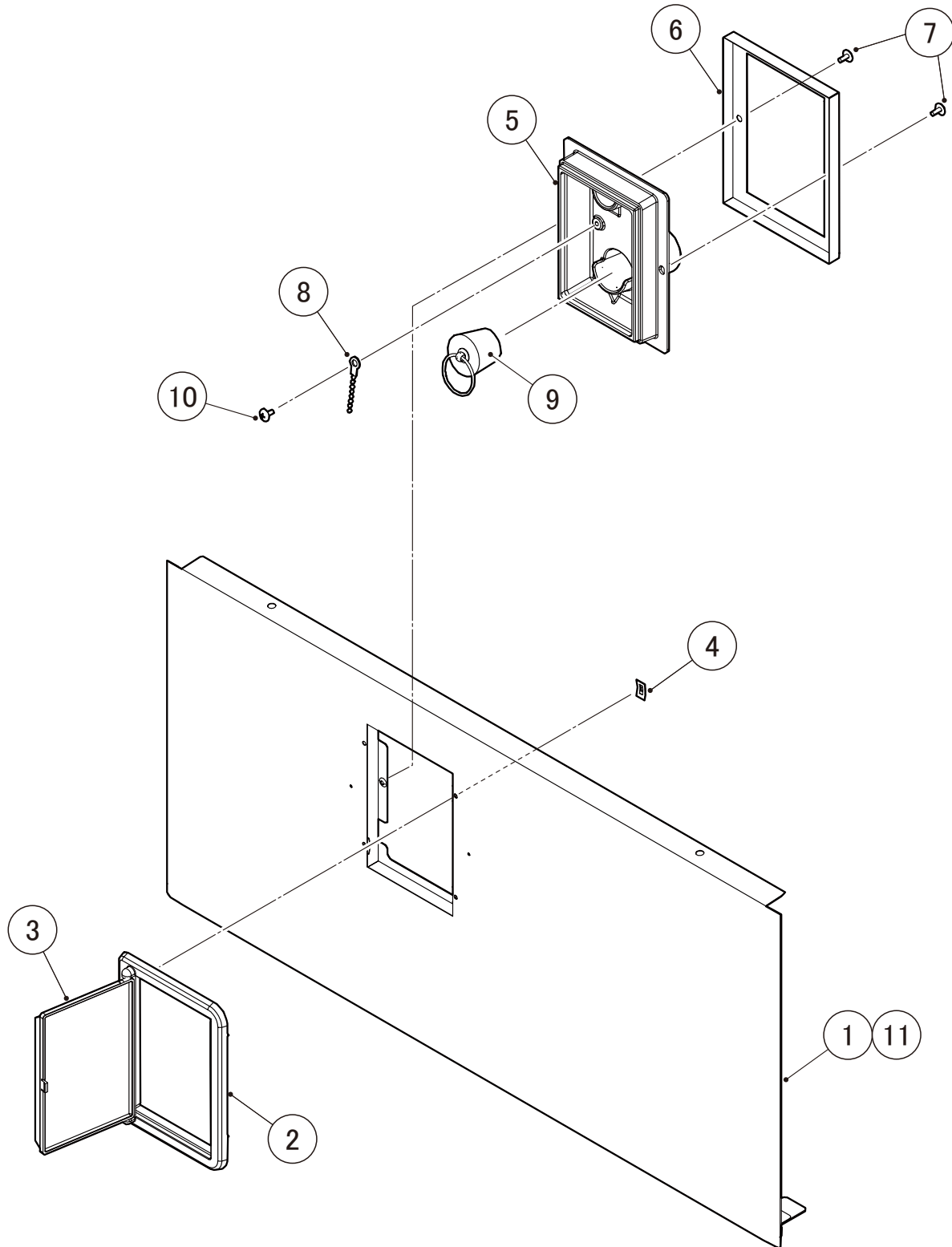
(C-1) and later



IM-100BZ (-23)
IM-130BZ (-23)

G. FRONT COVER UPPER ASSY

(Q-0) and later



MODEL: **IM-100BZ(-23)**
IM-130BZ(-23)

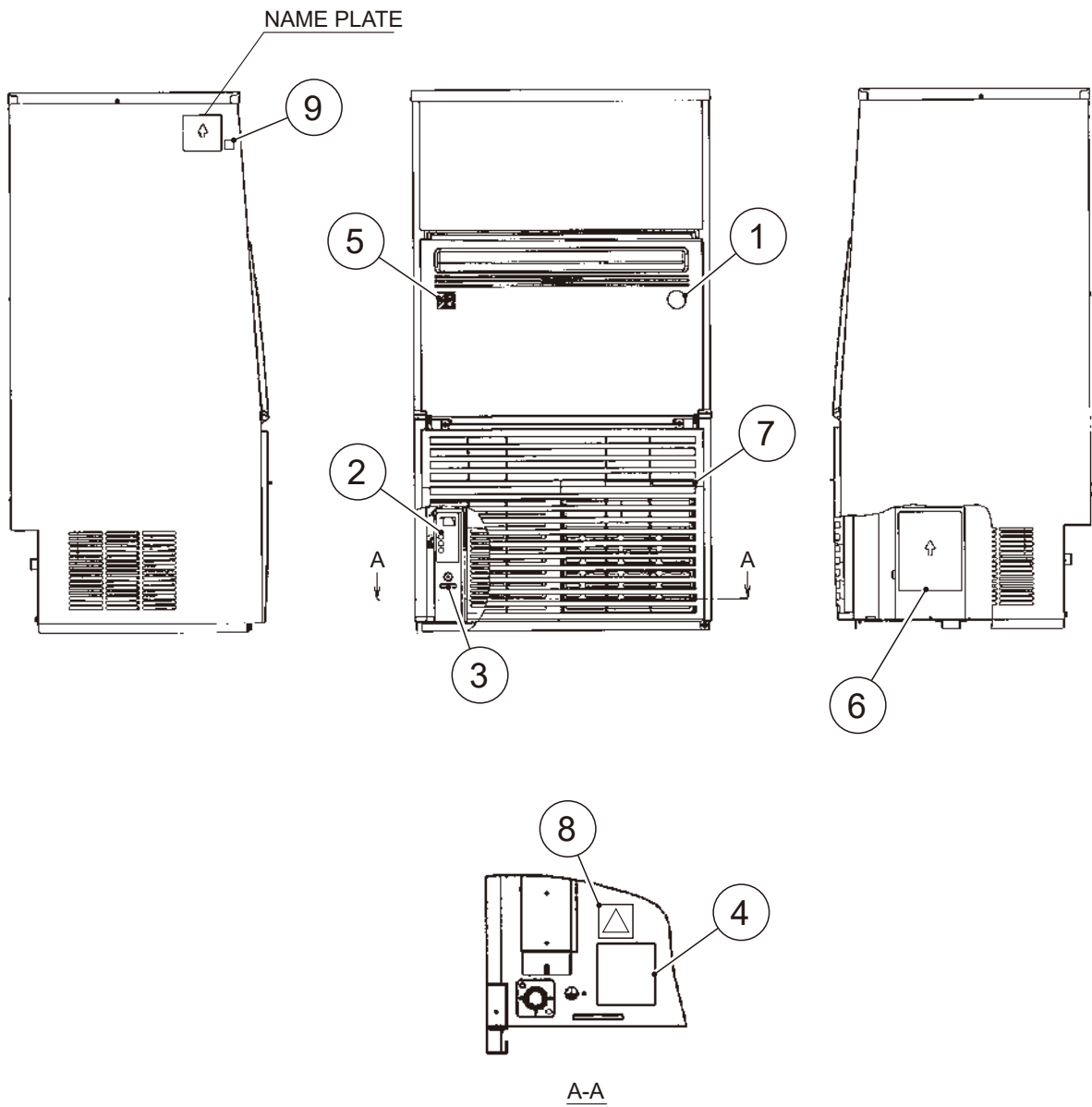
TITLE: **G. FRONT COVER UPPER ASSY**

INDEX NO.	DESCRIPTION	MATERIAL OR MODEL NUMBER	PART NUMBER	REQ'D NUMBER				
				Q-0 and later				
1	FRONT COVER UPPER (G)		3C0903G01	1				
2	FRAM-WINDOW		3C0298P01	1				
3	DOOR		3C0299P02	1				
4	SPEED NUT (TYPE P)		FNSP03F0	4				
5	GUIDE - FUNNEL		2X4618P01	1				
6	COVER - FUNNEL (B)		3Z1930M01	1				
7	T2 TRUSS HEAD SCREW		FT20408S0	2				
8	CHAIN		TS4494921	1				
9	ゴムセン		C05783-01	1				
10	TRUSS HEAD SCREW		FST0408S0	1				
11	INSULATION - FRONT (A)		3C0902P01	1				

IM-100A (-23)
IM-100B(Z) (-23)
IM-130A (-23,-21)
IM-130B(Z) (-23)

H. LABEL LOCATION

(C-1) and later



MODEL: **IM-100A (-23)**
IM-100B(Z) (-23)
MODEL: **IM-130A (-23,-21)**
IM-130B(Z) (-23)

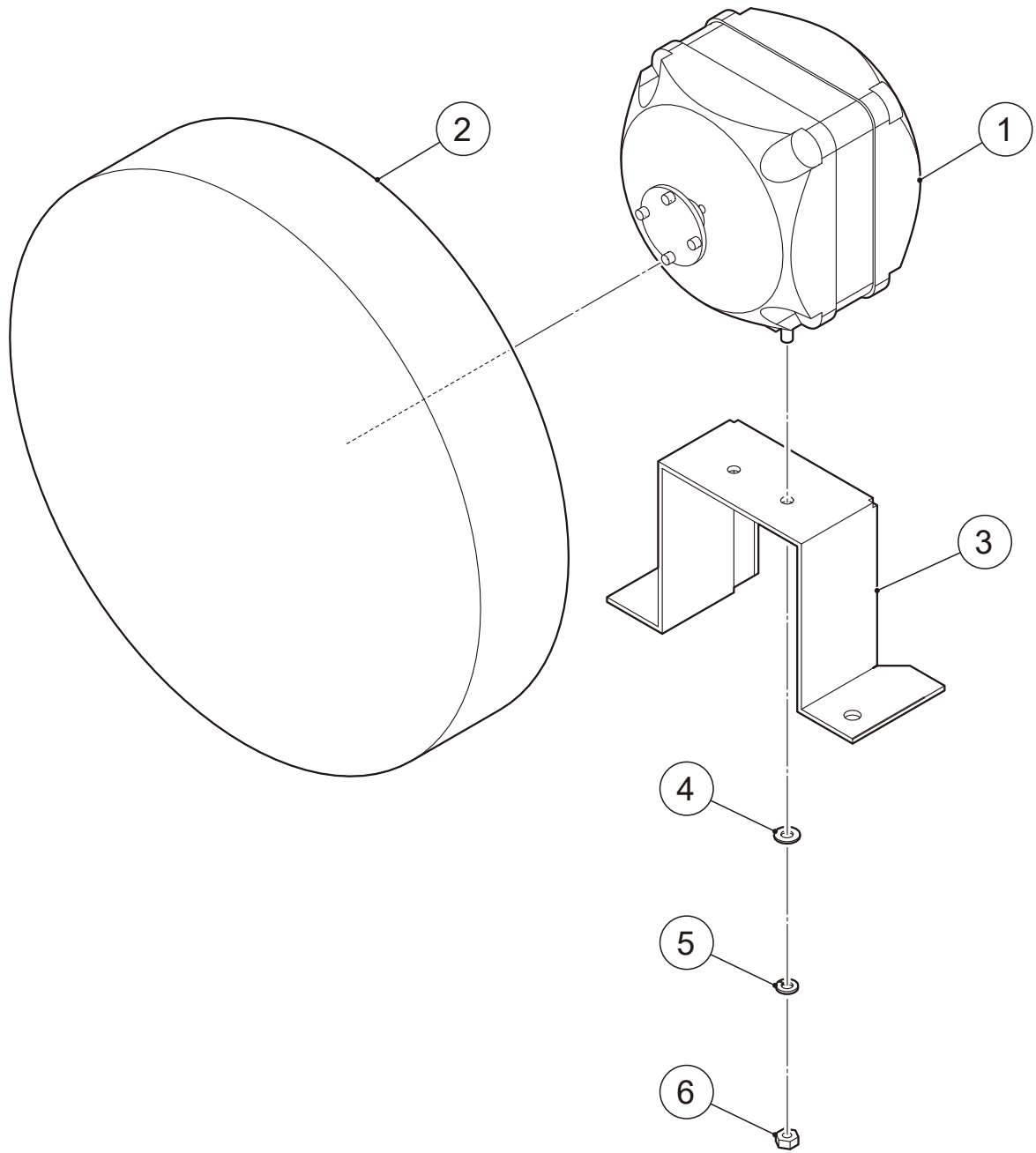
TITLE: H. LABEL LOCATION

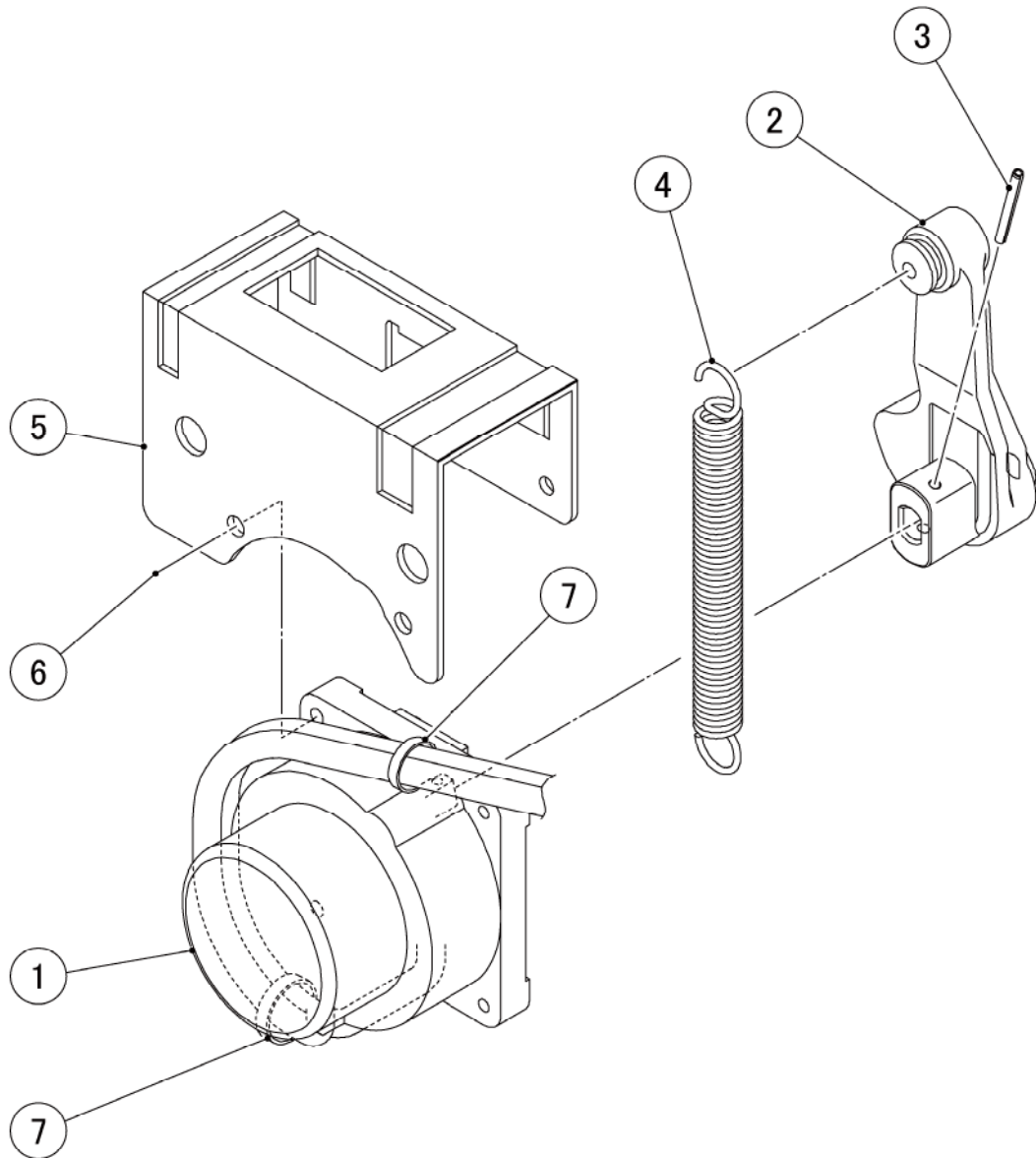
INDEX NO.	DESCRIPTION	MATERIAL OR MODEL NUMBER	PART NUMBER	REQ'D NUMBER				
				C-1 G-0	G-1 H-0	H-1 J-0	K-1 M-0	M-1 and later
1	LABEL - PENGUIN	Except Door SUS	468184-03	1	1	1	1	1
2	CONTROL LABEL		475642L01	1	1	1	-	-
	CONTROL LABEL (A)		481284L01	-	-	-	1	1
	CONTROL LABEL	China	482405L01	1	1	1	-	-
	CONTROL LABEL (A)		486335L01	-	-	-	1	1
3	LABEL - FUSE		466798-01	1	1	1	1	1
4	CAUTION LABEL - SERVICE		471180L01	1	1	1	1	1
		China	471348L01	1	1	1	1	1
5	LABEL - HACCP	Except Leg : H=90) Except Door SUS Except:M031-C110,- C111	476519L02	1	1	1	1	1
6	WIRING LABEL	IM-100A, IM-100A-23 Except China IM-130A-21 Secop IM-130A-23 Secop Southeast Asia	378540L01	1	1	1	1	1
		IM-100A, IM-100B IM-100A-23, IM-100B-23 China M031-C110,M031-C111	379739L01	1	1	1	1	1
		IM-130A, IM-130A-23 IM-130A-21 Except China	378541L01	1	1	1	1	1
		IM-130A, IM-130B IM-130A-23 IM-130B-23 China	379748L01	1	1	1	1	1
		IM-130A 230V,60Hz	383396L01	1	1	1	1	1
		IM-130B IM-130A-23, IM-130B-23 Secop China M032-D110,M032-D111	3C0326L01	-	-	-	1	1
7	LABEL - AIR FILTER		478746L01	1	1	1	1	1
		China	478747L01	1	1	1	1	1
8	CAUTION LABEL		473789L01	1	1	1	1	1
9	LABEL-REGULATION A	China	482347L01	1	1	1	1	1

IM-100A (-23)
IM-100B(Z) (-23)
IM-130A (-23,-21)
IM-130B(Z) (-23)

J. FAN MOTOR ASSY

(C-1) and later

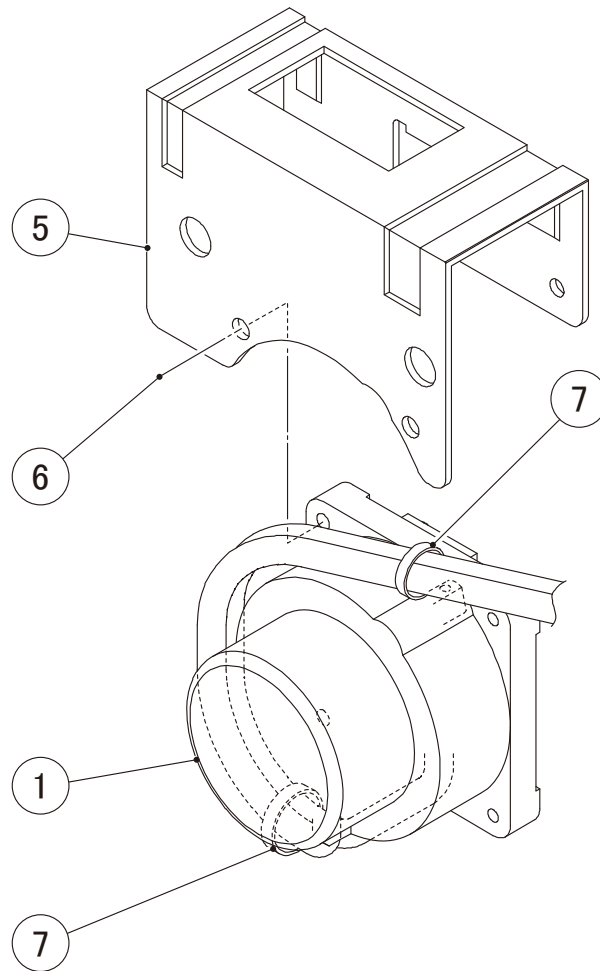




IM-100A (-23)
IM-100B(Z) (-23)
IM-130A (-23,-21)
IM-130B(Z) (-23)

K. ACTUATOR MOTOR ASSY

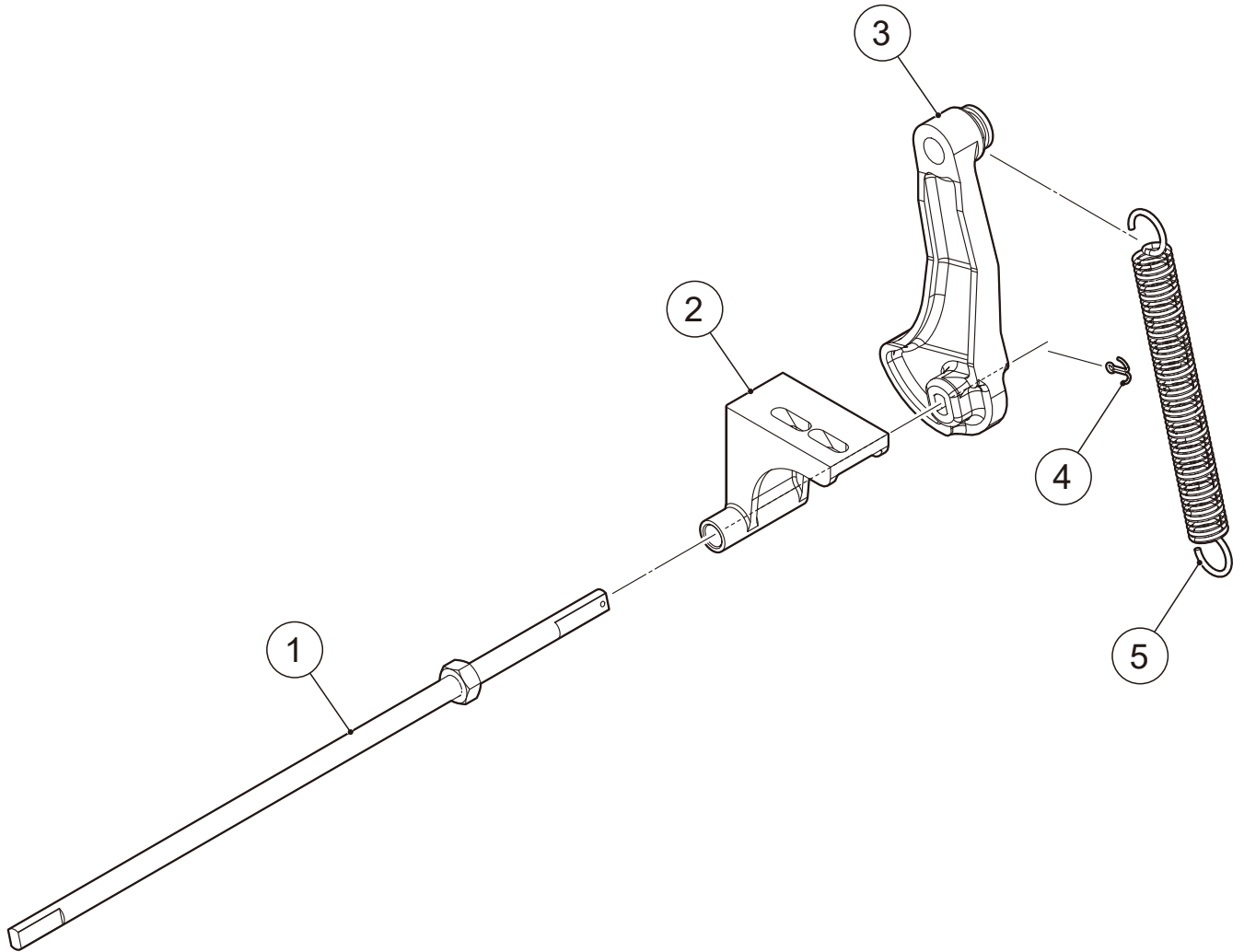
(G-1) and later



IM-100A (-23)
IM-100B(Z) (-23)
IM-130A (-23,-21)
IM-130B(Z) (-23)

L. CAM SHAFT ASSY

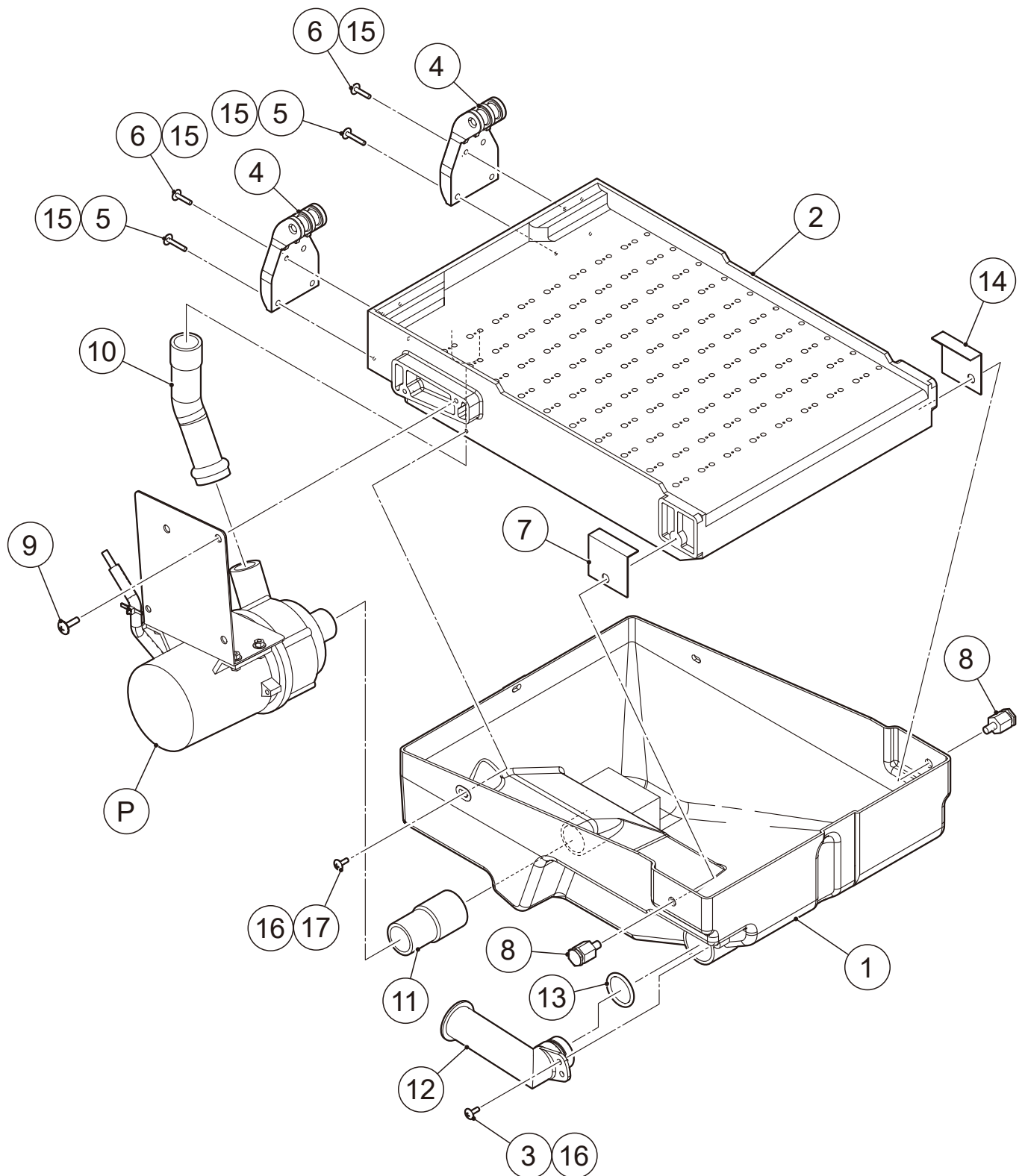
(C-1) and later



IM-100A(-23)
IM-100B(Z)(-23)
IM-130A(-23, -21)
IM-130B(Z)(-23)

M. WATER PAN ASSY

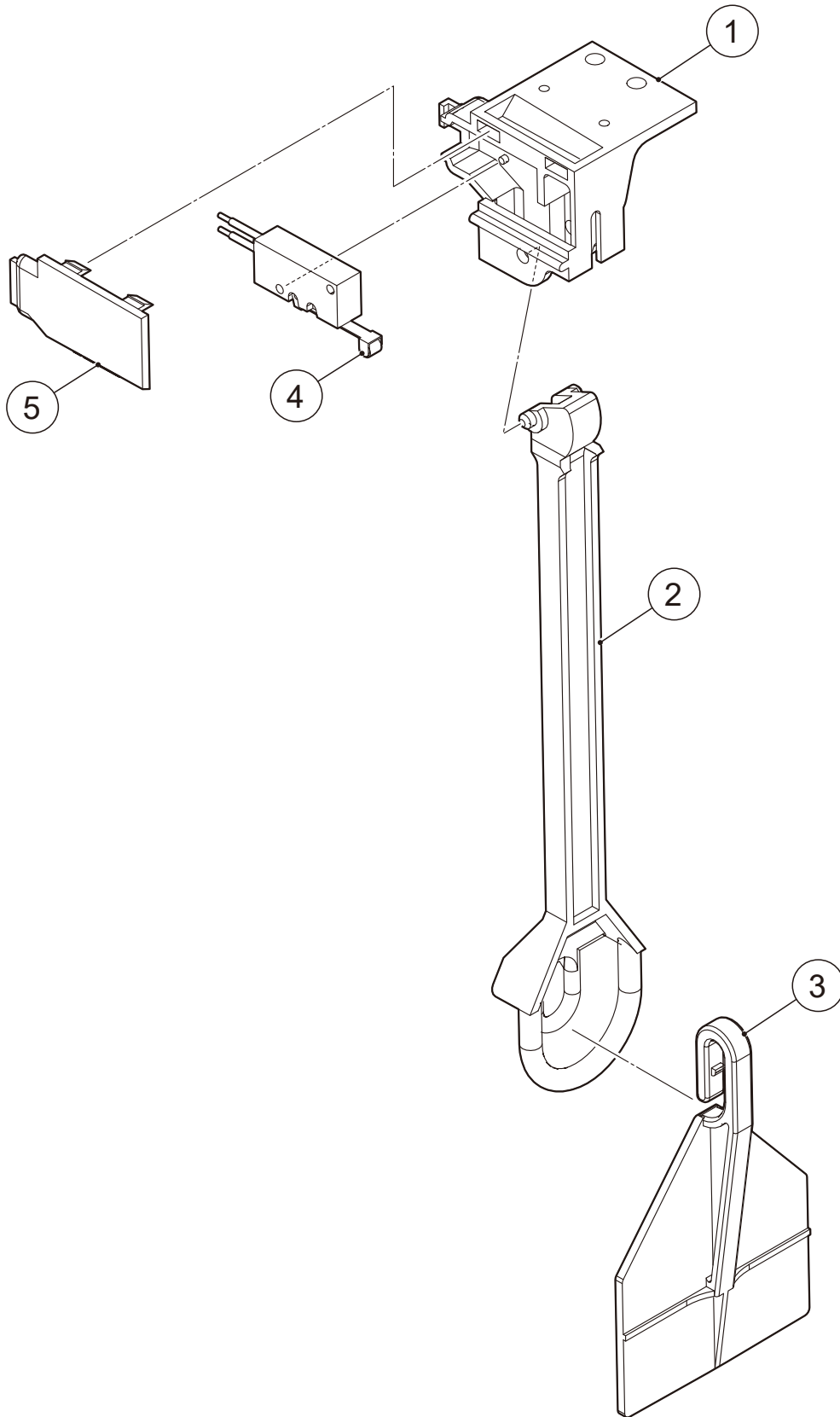
(C-1) and later



IM-100A (-23)
IM-100B(Z) (-23)
IM-130A (-23,-21)
IM-130B(Z) (-23)

N. BIN SWITCH ASSY

(C-1) and later



MODEL: **IM-100A (-23)**
IM-100B(Z) (-23)
MODEL: **IM-130A (-23,-21)**
IM-130B(Z) (-23)

TITLE: N. BIN SWITCH ASSY

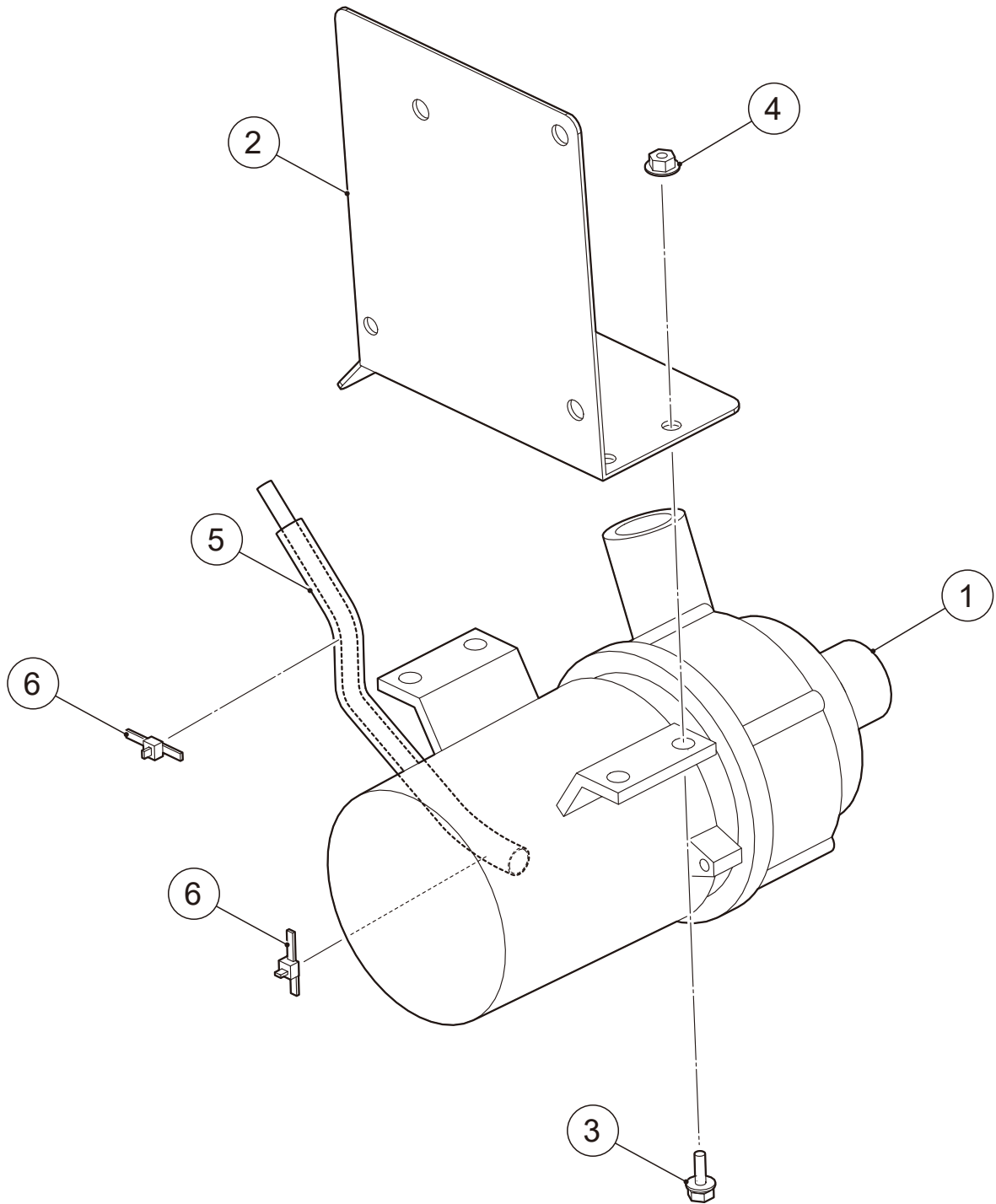
INDEX NO.	DESCRIPTION	MATERIAL OR MODEL NUMBER	PART NUMBER	REQ'D NUMBER					
				C-1 G-0	G-1 H-0	H-1 J-0	K-1 L-0 Until productio n in June 2021	L-0 From productio n in July 2021 M-0	M-1 and later
1	SWITCH BOX		1C0350P01	1 (Note1)	1 (Note1)	1 (Note1)	1 (Note1)	1	1
2	SWITCH ACTUATOR		3H1369-02	1	1	1	1	1	1
3	DETECTOR		378500P01	1	1	1	1	1	1
4	MICRO SWITCH		456432-02	1	1	1	1	-	-
			P05714-02	-	-	-	-	1	1
5	SWITCH BOX COVER		2C0203P01	1 (Note1)	1 (Note1)	1 (Note1)	1 (Note1)	1	1

(Note1) Replacement of NO. 1 and NO.5 must be done at the same time.

IM-100A (-23)
IM-100B(Z) (-23)
IM-130A (-23,-21)
IM-130B(Z) (-23)

P. PUMP MOTOR ASSY

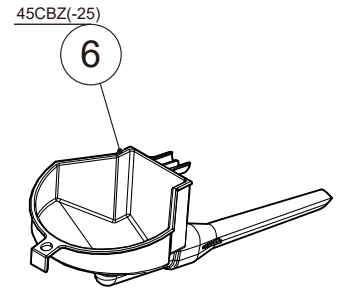
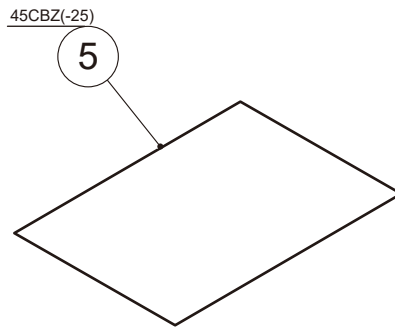
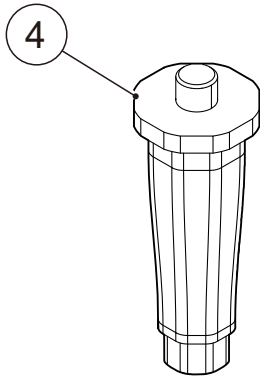
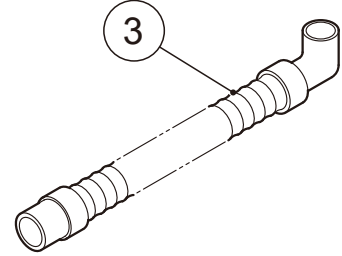
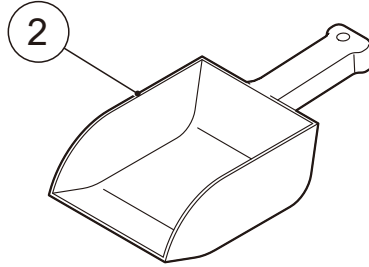
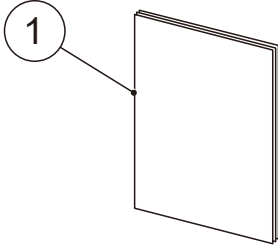
(C-1) and later



IM-100A (-23)
IM-100B(Z) (-23)
IM-130A (-23,-21)
IM-130B(Z) (-23)

Q. ACCESSORIES

(C-1) and later



MODEL: **IM-100A (-23)**
IM-100B(Z) (-23)
MODEL: **IM-130A (-23,-21)**
IM-130B(Z) (-23)

TITLE: Q. ACCESSORIES

INDEX NO.	DESCRIPTION	MATERIAL OR MODEL NUMBER	PART NUMBER	REQ'D NUMBER				
				C-1 G-0	G-1 H-0	H-1 J-0	K-1 M-0	M-1 and later
1	INSTRUCTION MANUAL		L1M031307	1	1	1	1	1
		IM-100B IM-100B-23 IM-130B IM-130B-23	L1M031311	-	-	-	-	1
		M031-C110,M031-C111 M032-D110,M032-D111	L1M033303	-	-	-	-	1
2	SCOOP		1H4123P02	1	1	1	1	1
3	OUTLET HOSE		P00055-01	1	1	1	1	1
4	LEG		P05012-01	4	4	4	4	4
		Leg : H=90	P04879-01	4	4	4	4	4
5	INSTRUCTION SHEET	M031-C110,M031-C111 M032-D110,M032-D111	2C1017L01	-	-	-	-	1
6	FUNNEL (G)	M031-C110,M031-C111 M032-D110,M032-D111	4C0459G01	-	-	-	-	1