



SELF-CONTAINED CUBER

PARTS LIST

[KOREA] [HSH] [HS] [HPH] [HID] [HMY] [HVN]
[HTH]

M142

M142-C001,C002,C003,C004,C005,C006

M142-C100,C150,C162,C163,C200,C202

C203,C204,C250,C251,C252,C253,C254

IM-65NE-Q

IM-65NE

IM-65NE-25

IM-65WNE

IM-65WNE-25

IM-65NE-LM

IM-65NE-LM103

IM-65NS

IM-65NS-Q

IM-65NS-LM

P-1 AUG. 2024

Q-1 MAY. 2025

List of Specifications

IM-65NE-Q	M142	Ball ICE of IM-65NE, 60Hz
IM-65NE(KR)	M142-C001	For KOREA power cord : hard-wired type
IM-65NE-25(KR)	M142-C002	For KOREA 25mm ICE of IM-65NE power cord : hard-wired type
IM-65WNE(KR)	M142-C003	For KOREA Water cooled power cord : hard-wired type
IM-65WNE-25(KR)	M142-C004	For KOREA Water cooled 25mm ICE power cord : hard-wired type
IM-65NE-LM(KR)	M142-C005	For GRAM
IM-65NE-LM103(KR)	M142-C006	Big ICE of IM-65NE for HKR 220V 60Hz
IM-65NS-Q	M142-C100	For HSH,50Hz
IM-65NS-LM	M142-C150	For HSH,50Hz
IM-65NS-Q	M142-C162	For HPH,60Hz
IM-65NS	M142-C163	For HPH,60Hz
IM-65NS-Q	M142-C200	For HS,50Hz
IM-65NS-Q	M142-C202	For HID,50Hz
IM-65NS-Q	M142-C203	For HMY,50Hz
IM-65NS-Q	M142-C204	For HVN,50Hz
IM-65NS-LM	M142-C250	For HS,50Hz
IM-65NS-LM	M142-C251	For HTH
IM-65NS-LM	M142-C252	For HID
IM-65NS-LM	M142-C253	For HMY
IM-65NS-LM	M142-C254	For HVN

Auxiliary Codes

Auxiliary Code Breakdown

The auxiliary code is the first two characters in the serial number. The first character indicates the year. Years progress or regress in alphabetical order. The series runs from "A" through "V" and the letters "I" and "O" are skipped. The second character indicates significant part changes within a year. Base is "0" and this number advances for each change. In cases where there is a letter in parentheses, this designates the month. This is the last character in the serial number. The series runs from "(A)" through "(M)" and the letter "(I)" is skipped. This designation is only included when identifying a parts change within an auxiliary code.

Note About Ordering Parts

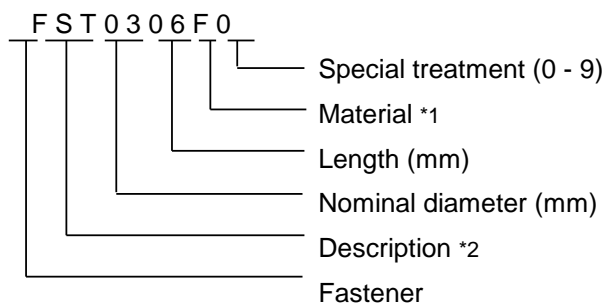
Most assemblies cannot be ordered as complete units; parts in the assemblies generally must be ordered separately.

MARKS LOCATED UNDER THE AUXILIARY CODE

- = Part deleted.

FASTENER PART NUMBER

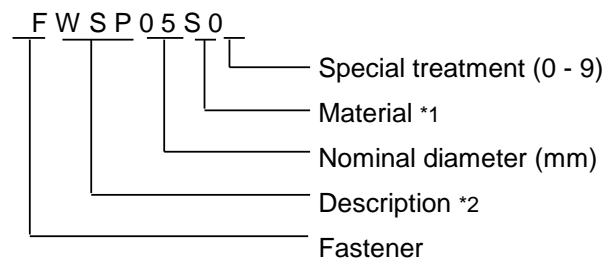
SCREWS



*1

- F: Steel
- S: Austenitic stainless steel
- M: Martensitic stainless steel
- B: Copper alloy
- P: Polycarbonate
- N: Polyamide
- V: PVC
- A: ABS
- X: Polyacetal
- L: Aluminum

NUTS & WASHERS



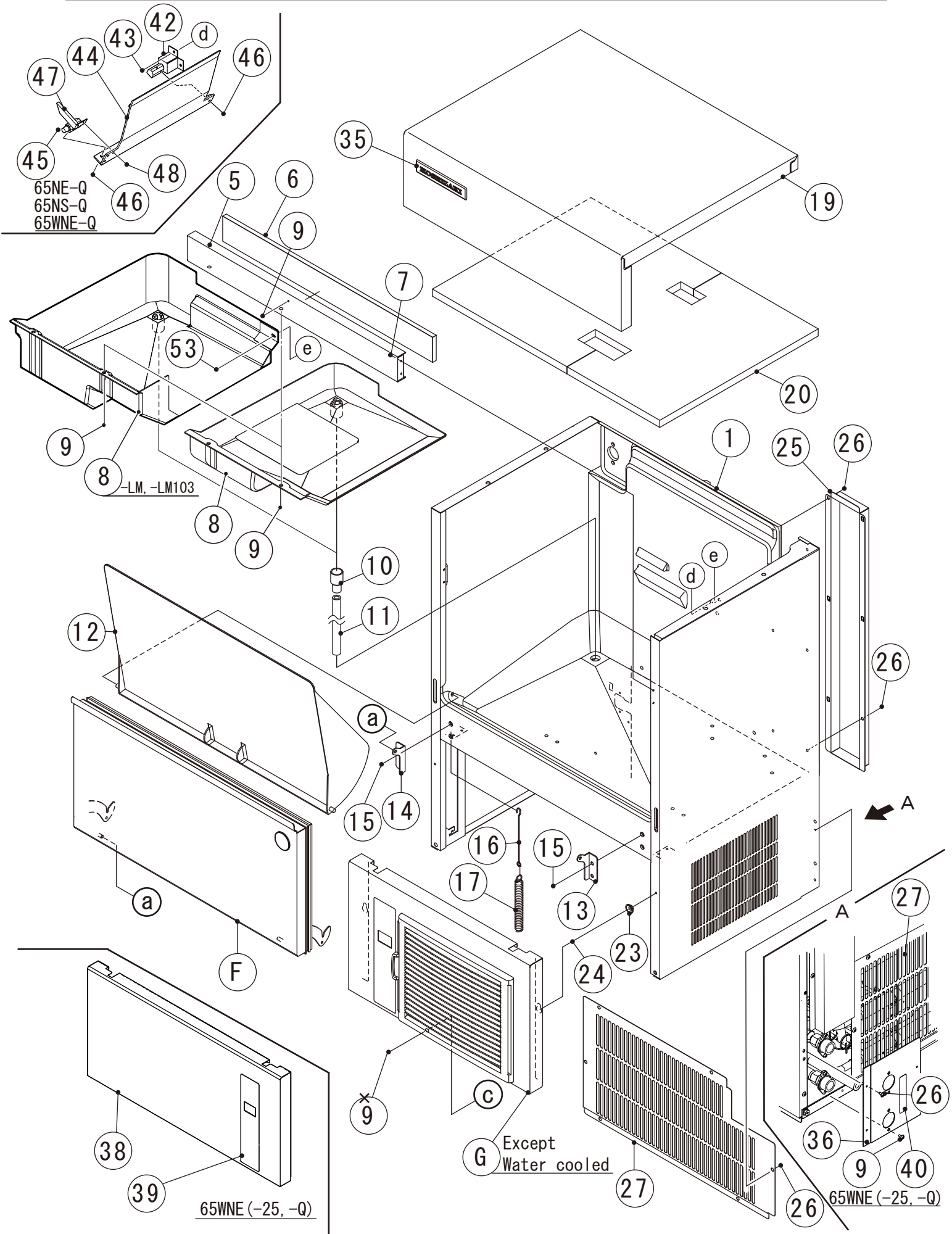
*2

- First letter
- S: Machine screw
- T: Tapping screw
- M: Wood screw
- B: Bolt
- W: Washer
- N: Nut

IM-65NE (-25, -LM, -LM103, -Q)
 IM-65WNE (-25)
 IM-65NS(-Q, -LM)

A. ICE CUBER ASSY (1/2)

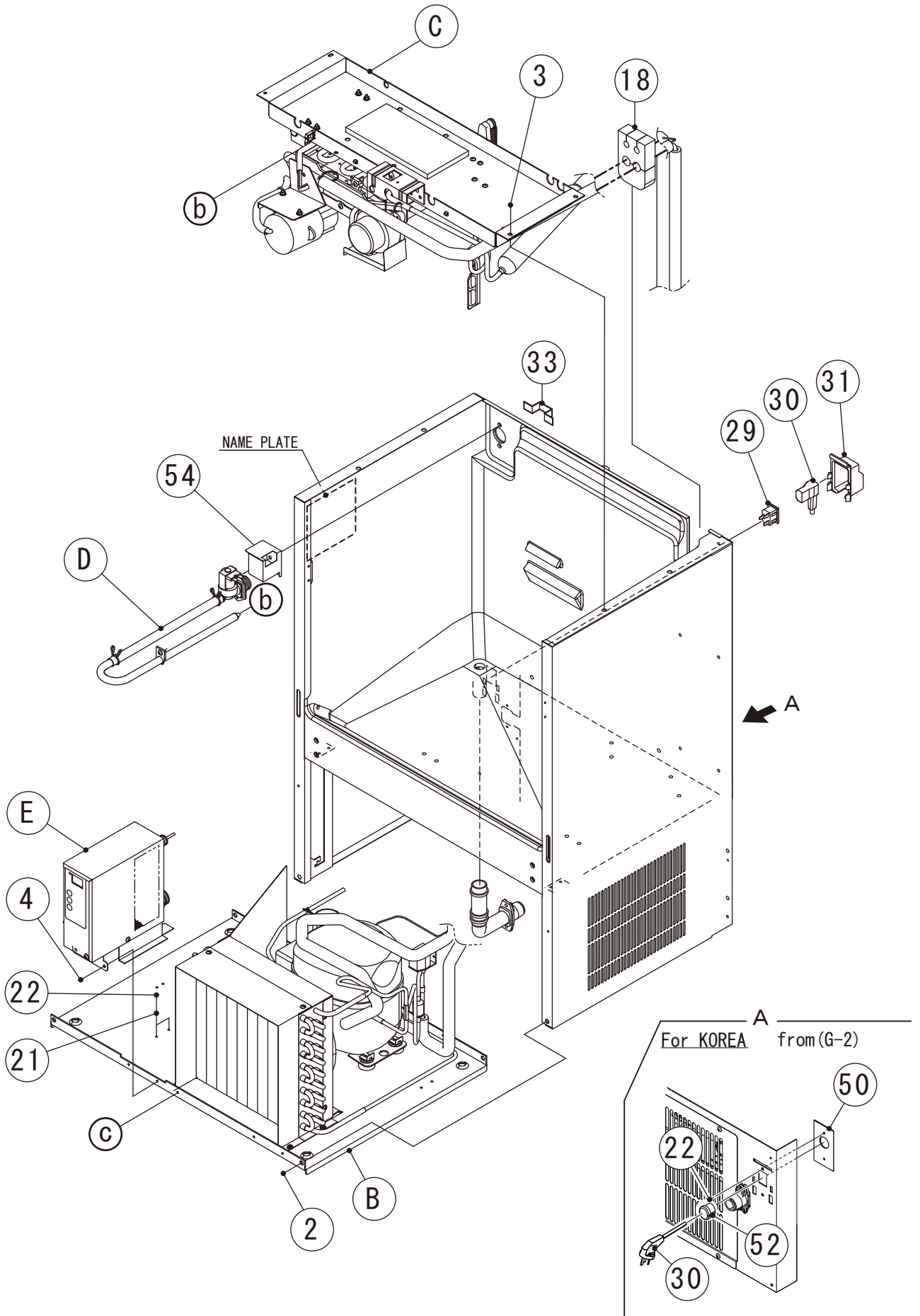
(P-1) and later



IM-65NE(-25, -LM, -LM103, -Q)
IM-65WNE(-25)
IM-65NS(-Q, -LM)

A. ICE CUBER ASSY (2/2)

(P-1) and later



MODEL: IM-65NE(-25,-LM,-LM103,-Q) IM-65WNE(-25) IM-65NS(-Q,-LM)			TITLE: A.ICE CUBBER ASSY					
INDEX NO.	DESCRIPTION	MATERIAL OR MODEL NUMBER	PART NUMBER	REQ'D NUMBER				
				P-1				
B	REFRIGERATION ASSY	M142,M142-C162	1H6002018	1				
		M142-C001	1H6002021	1				
		M142-C002	1H6002020	1				
		M142-C003	1H6004011	1				
		M142-C004	1H6004012	-				
		M142-C005	1H6118003	1				
		M142-C006	1H6118004	1				
		M142-C100,M142-C200 M142-C202,M142-C203 M142-C204	1C0986A01	1				
		M142-C150,M142-C250 M142-C251,M142-C252 M142-C253,M142-C254	1C0962A01	1				
		M142-C163	1H6002019	1				
C	ICE MAKING MECHANISM ASSY	M142,M142-C162	1C0981A01	1				
		M142-C003	1H4910A02	1				
		M142-C002,M142-C004	1H4910001	1				
		M142-C100,M142-C200 M142-C202,M142-C203 M142-C204	1C0988A01	1				
		M142-C150,M142-C250 M142-C251,M142-C252 M142-C253,M142-C254	1C0963A01	1				
		M142-C001,M142-C163	1C0982A01	1				
		MECHANISM ASSY	M142-C005,M142-C006	1H5334A02	1			
D	WATER CIRCUIT ASSY	M142,M142-C162	3Y7529002	1				
		M142-C001,M142-C002 M142-C003,M142-C004 M142-C163	3Y5857004	1				
		M142-C005,M142-C006	3Z0776001	1				
		M142-C100	3C1408A01	1				
		M142-C150	3C1297A01	1				
		M142-C200,M142-C202 M142-C203,M142-C204	3C1408001	1				
		M142-C250,M142-C251 M142-C252,M142-C253 M142-C254	3C1297001	1				
		M142-C002,M142-C003 M142-C004	2C1000001	1				
E	CONTROL BOX ASSY	M142,M142-C001 M142-C162,M142-C163	2C1444A01	1				
		M142-C005,M142-C006	2C1001001	1				
		M142-C100	2C1676A01	1				
		M142-C150	2C1563A01	1				
		M142-C200,M142-C202 M142-C203,M142-C204	2C1676001	1				
		M142-C250,M142-C251 M142-C252,M142-C253 M142-C254	2C1563001	1				

MODEL: IM-65NE(-25,-LM,-LM103,-Q) IM-65WNE(-25) IM-65NS(-Q,-LM)				TITLE: A.ICE CUBBER ASSY				
INDEX NO.	DESCRIPTION	MATERIAL OR MODEL NUMBER	PART NUMBER	REQ'D NUMBER				
				P-1				
F	DOOR ASSY	M142,M142-C001 M142-C002,M142-C003 M142-C004,M142-C005 M142-C006	3Y5644A02	1				
		M142-C100,M142-C150 M142-C200,M142-C202 M142-C203,M142-C204 M142-C250,M142-C251 M142-C252,M142-C253 M142-C254	3C1298A01	1				
		M142-C162,M142-C163	3Y5644004	1				
G	FRONT PANEL LOWER ASSY	M142,M142-C001 M142-C002,M142-C003 M142-C004,M142-C005 M142-C006,M142-C162 M142-C163	3Y5615A02	1				
		M142-C100,M142-C150 M142-C200,M142-C202 M142-C203,M142-C204 M142-C250,M142-C251 M142-C252,M142-C253 M142-C254	3C1303A02	1				
M	ACCESSORIES	M142,M142-C001 M142-C002,M142-C005 M142-C006	A04372-01	1				
		M142-C003,M142-C004	A04372001	1				
		M142-C163	A04372003	1				
		M142-C162	A04372004	1				
		M142-C100,M142-C150	A04626-01	1				
		M142-C200,M142-C202 M142-C203,M142-C204 M142-C250,M142-C251 M142-C252,M142-C253 M142-C254	A04626001	1				
1	UNIT FRAME	M142,M142-C162	1C0843G01	1				
		M142-C001,M142-C002 M142-C003,M142-C004 M142-C163	1C0841G01	1				
		M142-C005,M142-C006	1C0842G01	1				
		M142-C100,M142-C200 M142-C202,M142-C203 M142-C204	1C0961G02	1				
		M142-C150,M142-C250 M142-C251,M142-C252 M142-C253,M142-C254	1C0961G01	1				
2	TAPPING SCREW - HEX		442040-01	4				
3	TRUSS HEAD TAPPING SCREW T2		FST0412S0	4				

MODEL: IM-65NE(-25,-LM,-LM103,-Q) IM-65WNE(-25) IM-65NS(-Q,-LM)			TITLE: A.ICE CUBBER ASSY					
INDEX NO.	DESCRIPTION	MATERIAL OR MODEL NUMBER	PART NUMBER	REQ'D NUMBER				
				P-1				
4	FLANGE BOLT (C-TITE)	M142,M142-C001 M142-C002,M142-C003 M142-C004,M142-C100 M142-C150,M142-C162 M142-C163,M142-C200 M142-C202,M142-C203 M142-C204,M142-C250 M142-C251,M142-C252 M142-C253,M142-C254	FTR0408M0	2				
		M142-C005,M142-C006		3				
5	FRONT FRAME	M142,M142-C162	3C1204M01	1				
		M142-C001,M142-C002 M142-C003,M142-C004 M142-C005,M142-C006 M142-C163	3Z1555M03	1				
		M142-C100,M142-C150 M142-C200,M142-C202 M142-C203,M142-C204 M142-C250,M142-C251 M142-C252,M142-C253 M142-C254	3C1299M03	1				
6	INSULATION - FRONT FRAME	M142,M142-C001 M142-C002,M142-C003 M142-C004,M142-C005 M142-C006,M142-C162 M142-C163	4H2317-03	1				
		M142-C100,M142-C150 M142-C200,M142-C202 M142-C203,M142-C204 M142-C250,M142-C251 M142-C252,M142-C253 M142-C254	4C0683P01	1				
7	POP RIVET	M142-C001,M142-C002 M142-C100,M142-C150 M142-C163,M142-C200 M142-C202,M142-C203 M142-C204,M142-C250 M142-C251,M142-C252 M142-C253,M142-C254	7170-0006	4				
8	DRAIN PAN	M142,M142-C100 M142-C162,M142-C200 M142-C202,M142-C203 M142-C204	2H1676G01	1				
		M142-C001,M142-C002 M142-C163	2H1441-02	1				
		M142-C005,M142-C006 M142-C150,M142-C250 M142-C251,M142-C252 M142-C253,M142-C254	2H1632G01	1				
9	TRUSS HEAD TAPPING SCREW (S-TITE)	M142,M142-C005 M142-C006,M142-C162	FTS0408M0	2				
		M142-C001,M142-C002 M142-C100,M142-C150 M142-C163,M142-C200 M142-C202,M142-C203 M142-C204,M142-C250 M142-C251,M142-C252 M142-C253,M142-C254		4				
		M142-C003,M142-C004		8				

MODEL: IM-65NE(-25,-LM,-LM103,-Q) IM-65WNE(-25) IM-65NS(-Q,-LM)			TITLE: A.ICE CUBBER ASSY					
INDEX NO.	DESCRIPTION	MATERIAL OR MODEL NUMBER	PART NUMBER	REQ'D NUMBER				
				P-1				
10	DRAIN TUBE		4Z0986R01	1				
11	DRAIN PIPE	M142,M142-C005 M142-C006,M142-C100 M142-C150,M142-C162 M142-C200,M142-C202 M142-C203,M142-C204 M142-C250,M142-C251 M142-C252,M142-C253 M142-C254	4Y7493P04	1				
		M142-C001,M142-C002 M142-C003,M142-C004 M142-C163	4Y7493P03	1				
12	SLOPE		2H1349-02	1				
13	HINGE (RIGHT)	M142,M142-C001, M142-C002,M142-C003, M142-C004,M142-C005 M142-C006,M142-C162 M142-C163	3E0327M01	1				
		M142-C100,M142-C150 M142-C200,M142-C202 M142-C203,M142-C204 M142-C250,M142-C251 M142-C252,M142-C253 M142-C254	4H2583-01	1				
14	HINGE (LEFT)	M142,M142-C001, M142-C002,M142-C003, M142-C004,M142-C005 M142-C006,M142-C162 M142-C163	3E0327M02	1				
		M142-C100,M142-C150 M142-C200,M142-C202 M142-C203,M142-C204 M142-C250,M142-C251 M142-C252,M142-C253 M142-C254	4H2584-01	1				
15	HEX HEAD BOLT (SPRING WASHER AND FLAT WASHER)		FBK0620S0	4				
16	HOOK		404060-10	1				
17	SPRING		4H0823-01	1				
18	INSULATION-BIN	M142,M142-C001, M142-C002,M142-C003, M142-C004,M142-C005 M142-C006,M142-C162 M142-C163	4Y7416P01	1				
		M142-C100,M142-C150 M142-C200,M142-C202 M142-C203,M142-C204 M142-C250,M142-C251 M142-C252,M142-C253 M142-C254	4C0684P01	1				

MODEL: IM-65NE(-25,-LM,-LM103,-Q) IM-65WNE(-25) IM-65NS(-Q,-LM)			TITLE: A.ICE CUBBER ASSY					
INDEX NO.	DESCRIPTION	MATERIAL OR MODEL NUMBER	PART NUMBER	REQ'D NUMBER				
				P-1				
19	FRONT PANEL(UPPER)	M142-C005,M142-C006	3Y7468G01	1				
		M142-C002,M142-C003 M142-C004	3Y5548G03	1				
		M142,M142-C100 M142-C150,M142-C162 M142-C200,M142-C202 M142-C203,M142-C204 M142-C250,M142-C251 M142-C252,M142-C253 M142-C254	3C1300G01	1				
		M142-C001,M142-C163	3C1705G02	1				
20	INSULATION - TOP	M142,M142-C162	3Y7530G01	1				
		M142-C005,M142-C006	3Y7387G01	1				
		M142-C001,M142-C002 M142-C163	3Y5960P02	1				
		M142-C100,M142-C200 M142-C202,M142-C203 M142-C204	3C1410G01	1				
		M142-C150,M142-C250 M142-C251,M142-C252 M142-C253,M142-C254	3C1313G01	1				
	INSULATION-TOP PANEL	M142	3Y7493G02	-				
21	SPRING WASHER	M142,M142-C001, M142-C002,M142-C003 M142-C004,M142-C100 M142-C150,M142-C162 M142-C163,M142-C200 M142-C202,M142-C203 M142-C204,M142-C250 M142-C251,M142-C252 M142-C253,M142-C254	FWSP04S0	2				
22	TRUSS HEAD MACHINE SCREW		FST0408S0	2				
23	TAPER COLLAR		4H0171-01	2				
24	RIVET	M142,M142-C003, M142-C004,M142-C005 M142-C006,M142-C162	7170-0002	8				
		M142-C001,M142-C002 M142-C163		4				
		M142-C100,M142-C150 M142-C200,M142-C202 M142-C203,M142-C204 M142-C250,M142-C251 M142-C252,M142-C253 M142-C254		2				
25	COVER - PIPE	M142,M142-C001, M142-C002,M142-C003, M142-C004,M142-C005 M142-C006,M142-C162 M142-C163	3Y5869M01	1				
		M142-C100,M142-C150 M142-C200,M142-C202 M142-C203,M142-C204 M142-C250,M142-C251 M142-C252,M142-C253 M142-C254	3C1302M02	1				

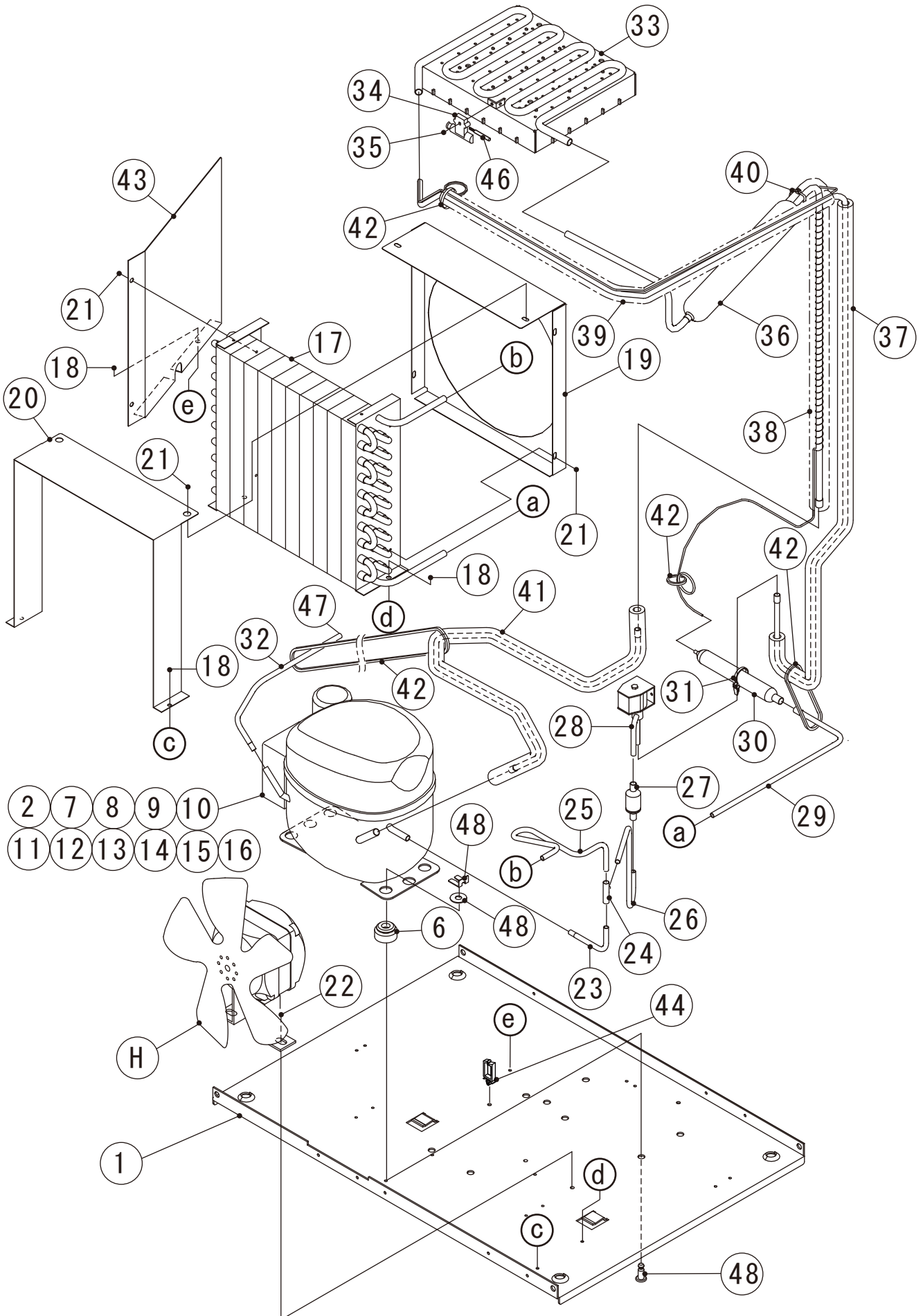
MODEL: IM-65NE(-25,-LM,-LM103,-Q) IM-65WNE(-25) IM-65NS(-Q,-LM)			TITLE: A.ICE CUBBER ASSY					
INDEX NO.	DESCRIPTION	MATERIAL OR MODEL NUMBER	PART NUMBER	REQ'D NUMBER				
				P-1				
26	TRUSS HEAD TAPPING SCREW T2	M142,M142-C001, M142-C002,M142-C005 M142-C006,M142-C100 M142-C150,M142-C162 M142-C163,M142-C200 M142-C202,M142-C203 M142-C204,M142-C250 M142-C251,M142-C252 M142-C253,M142-C254	FT20408F0	12				
		M142-C003,M142-C004		14				
27	REAR COVER	M142,M142-C001, M142-C002,M142-C005 M142-C006,M142-C162 M142-C163	3Y5858M01	1				
		M142-C003,M142-C004	3Y6615M01	1				
		M142-C100,M142-C150 M142-C200,M142-C202 M142-C203,M142-C204 M142-C250,M142-C251 M142-C252,M142-C253 M142-C254	3C1304M01	1				
29	CONNECTOR	M142-C100,M142-C150 M142-C162,M142-C163 M142-C200,M142-C202 M142-C203,M142-C204 M142-C250,M142-C251 M142-C252,M142-C253 M142-C254	P02656-01	1				
30	POWER SUPPLY CORD	KC-PLUG(10A) M142,M142-C001 M142-C002,M142-C003 M142-C004,M142-C005 M142-C006	P04435-01	1				
		M142-C200,M142-C203 M142-C250,M142-C253	P02795-01	1				
		M142-C162	C06039-01	1				
		M142-C163	C06039-01	1				
		M142-C202,M142-C252	P02794-01	1				
		M142-C204,M142-C254	C06074-01	1				
		M142-C251	P03994-01	1				
31	COVER - CONNECTOR	ACCESSORIES NO.4 EXCEPT(KOREA)	2X0271P01	-				
33	CAUTION - LABEL		452552-01	1				
35	EMBLEM	(HE)	340842-01	-				
	EMBLEM-GRAM	(GRAM)	4Y6123L01	-				
36	BRACKET - WATER	M142-C003	4Y7399M01	1				
37	S-TITE TRUSS HEAD SCREW	M142-C003,M142-C004	FTS0408F0	-				
38	FRONT PANEL LOWER(G)	M142-C003 Including No. 39	3Y5939G02	1				
39	OPERATION LABEL		375116L03	-				
40	LABEL-CONNECTION	M142-C003,M142-C004	464541-02	1				

MODEL: IM-65NE(-25,-LM,-LM103,-Q) IM-65WNE(-25) IM-65NS(-Q,-LM)			TITLE: A.ICE CUBBER ASSY					
INDEX NO.	DESCRIPTION	MATERIAL OR MODEL NUMBER	PART NUMBER	REQ'D NUMBER				
				P-1				
42	BRACE(B)	M142,M142-C100 M142-C162,M142-C200 M142-C202,M142-C203 M142-C204	4X0885-01	1				
43	TRUSS HEAD TAPPING SCREW T2	M142,M142-C162	FT20410S0	2				
44	ICE GUIDE(F)	M142,M142-C100 M142-C200,M142-C202 M142-C203,M142-C204	3H4973G01	1				
45	ICE GUIDE SHAFT(B)	M142,M142-C100 M142-C162,M142-C200 M142-C202,M142-C203 M142-C204	4H5590-01	2				
46	TRUSS HEAD MACHINE SCREW	M142,M142-C100 M142-C162,M142-C200 M142-C202,M142-C203 M142-C204	FST0412S0	4				
47	LEVER-ICE GUIDE	M142,M142-C100 M142-C162,M142-C200 M142-C202,M142-C203 M142-C204	4H7248-01	1				
48	TRUSS HEAD SCREW	M142,M142-C100 M142-C162,M142-C200 M142-C202,M142-C203 M142-C204	FST0408S0	2				
50	BRACKET - POWER CORD	M142,M142-C001, M142-C002,M142-C003, M142-C004,M142-C005 M142-C006,M142-C162	483273M01	1				
52	BUSHING	M142,M142-C001 M142-C002,M142-C003 M142-C004,M142-C005 M142-C006,M142-C162 M142-C163	420472-02	1				
53	TRUSS HEAD TAPPING SCREW T2	M142-C005,M142-C006	FT20410S0	1				
54	COVER-WATER VALVE	M142,M142-C162	3Y6277M01	1				
		M142-C100,M142-C150	3C1305M01	1				
55	LABEL-REGULATION A	M142-C100,M142-C150	482347L01	1				
56	ラベル/CFC AND HCFC FREE	M142-C202,M142-C252	482091L01	1				

IM-65NE(-Q, 25, LM, LM103)
IM-65NS(-Q, -LM)

B. REFRIGERATION ASSY

(P-1) and later



MODEL: IM-65NE(-25,LM,-LM103,-Q) IM-65NS(-Q,-LM)				TITLE: B.REFRIGERATION ASSY				
INDEX NO.	DESCRIPTION	MATERIAL OR MODEL NUMBER	PART NUMBER	REQ'D NUMBER				
				P-1 Q-0	Q-1			
H	FAN MOTOR ASSY	M142,M142-C001 M142-C002,M142-C005 M142-C006,M142-C162 M142-C163	3E0060A01	1	1			
		M142-C100,M142-C150 M142-C200,M142-C202 M142-C203,M142-C204 M142-C250,M142-C251 M142-C252,M142-C253 M142-C254	3C1312A01	1	1			
1	BASE	M142,M142-C001 M142-C002,M142-C005 M142-C006,M142-C162 M142-C163	1C0767M01	1	1			
		M142-C100,M142-C150 M142-C200,M142-C202 M142-C203,M142-C204 M142-C250,M142-C251 M142-C252,M142-C253 M142-C254	1C0964M01	1	1			
2	COMPRESSOR	(50Hz)	P02617-01	1	1			
		M142-C100,M142-C200 M142-C202,M142-C203 M142-C204	P02582-01	1	1			
		M142-C150,M142-C250 M142-C251,M142-C252 M142-C253,M142-C254	451196-01	1	1			
3	PIN		P02605-01	-	-			
4	WASHER		P02606-01	-	-			
5	CLAMP		P02607-01	-	-			
6	RUBBER GROMMET	M142,M142-C001 M142-C002,M142-C005 M142-C006,M142-C100 M142-C162,M142-C163 M142-C200,M142-C202 M142-C203,M142-C204	P02608-01	4	4			
		M142-C150,M142-C250 M142-C251,M142-C252 M142-C253,M142-C254	450897-01	4	4			
7	HERMETIC TERMINAL COVER	M142,M142-C001 M142-C002,M142-C005 M142-C006,M142-C100 M142-C162,M142-C163 M142-C200,M142-C202 M142-C203,M142-C204	P03143-01	1	1			
		M142-C150,M142-C250 M142-C251,M142-C252 M142-C253,M142-C254	450896-01	1	1			
8	SCREW	M142,M142-C001 M142-C002,M142-C005 M142-C006,M142-C100 M142-C162,M142-C163 M142-C200,M142-C202 M142-C203,M142-C204	P00840-01	2	2			

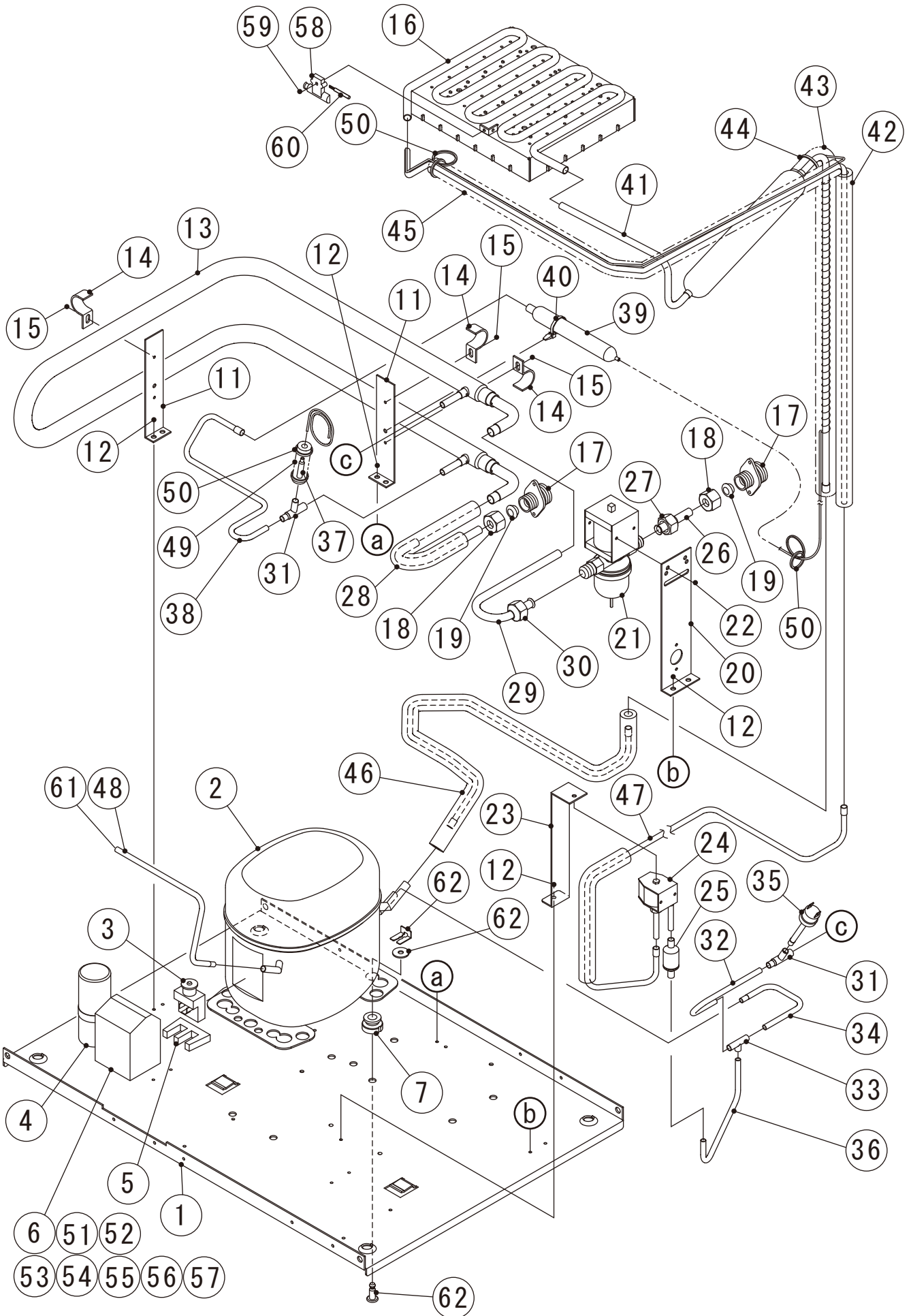
MODEL: IM-65NE(-25,LM,-LM103,-Q) IM-65NS(-Q,-LM)				TITLE: B.REFRIGERATION ASSY				
INDEX NO.	DESCRIPTION	MATERIAL OR MODEL NUMBER	PART NUMBER	REQ'D NUMBER				
				P-1 Q-0	Q-1			
9	BRACKET FOR CAPACITOR	M142,M142-C001 M142-C002,M142-C005 M142-C006,M142-C162 M142-C163	P02610-01	1	1			
10	START CAPACITOR	M142,M142-C001 M142-C002,M142-C005 M142-C006,M142-C100 M142-C162,M142-C163 M142-C200,M142-C202 M142-C203,M142-C204	P02611-01	1	1			
		M142-C150,M142-C250 M142-C251,M142-C252 M142-C253,M142-C254	450898-01	1	1			
11	TERMINAL BOARD	M142,M142-C001 M142-C002,M142-C005 M142-C006,M142-C100 M142-C162,M142-C163 M142-C200,M142-C202 M142-C203,M142-C204	P02612-01	1	1			
12	STARTING RELAY	M142,M142-C001 M142-C002,M142-C005 M142-C006,M142-C162 M142-C163	P02619-01	1	1			
		M142-C100,M142-C200 M142-C202,M142-C203 M142-C204	P02622-01	1	1			
		M142-C150,M142-C250 M142-C251,M142-C252 M142-C253,M142-C254	451197-01	1	1			
13	MOTOR PROTECTOR	M142,M142-C001 M142-C002,M142-C005 M142-C006,M142-C162 M142-C163	P02614-01	1	1			
		M142-C100,M142-C200 M142-C202,M142-C203 M142-C204	P02621-01	1	1			
14	PROTECTOR RETAINER	Except:M142-C150,M142-C250,M142-C251,M142-C252,M142-C253,M142-C254	P02815-01	1	1			
15	SELF TAPPING SCREW M4-11	M142,M142-C001 M142-C002,M142-C005 M142-C006,M142-C100 M142-C162,M142-C163 M142-C200,M142-C202 M142-C203,M142-C204	P02615-01	1	1			
16	SELF TAPPING SCRW M4-21	M142,M142-C001 M142-C002,M142-C005 M142-C006,M142-C100 M142-C162,M142-C163 M142-C200,M142-C202 M142-C203,M142-C204	P02616-01	1	1			
17	CONDENSER - AIR COOLED		P03373-01	1	1			
18	FLANGE BOLT (C-TITE)		FTR0408M0	5	5			

MODEL: IM-65NE(-25,LM,-LM103,-Q) IM-65NS(-Q,-LM)				TITLE: B.REFRIGERATION ASSY				
INDEX NO.	DESCRIPTION	MATERIAL OR MODEL NUMBER	PART NUMBER	REQ'D NUMBER				
				P-1 Q-0	Q-1			
19	SHROUD	M142,M142-C001 M142-C002,M142-C005 M142-C006,M142-C162 M142-C163	3Y5883M01	1	1			
		M142-C100,M142-C150 M142-C200,M142-C202 M142-C203,M142-C204 M142-C250,M142-C251 M142-C252,M142-C253 M142-C254	3C1310M01	1	1			
20	COVER - CONDENSER	M142,M142-C001 M142-C002,M142-C005 M142-C006,M142-C162 M142-C163	3Y5890M01	1	1			
		M142-C100,M142-C150 M142-C200,M142-C202 M142-C203,M142-C204 M142-C250,M142-C251 M142-C252,M142-C253 M142-C254	3C1311M01	1	1			
21	TRUSS HEAD TAPPING SCREW T2		FT20408F0	6	6			
22	HEX HEAD BOLT (SPRING WASHER AND FLAT WASHER)		FBK0612F0	2	2			
23	PIPE(A) - HIGH SIDE	M142,M142-C001 M142-C002,M142-C005 M142-C006,M142-C162 M142-C163	4Y7160M01	1	1			
		M142-C100,M142-C200 M142-C202,M142-C203 M142-C204	4C0726M01	1	1			
		M142-C150,M142-C250 M142-C251,M142-C252 M142-C253,M142-C254	4C0687M01	1	1			
24	TEE - 6.4		417394-01	1	1			
25	PIPE(B) - HIGH SIDE	M142,M142-C001 M142-C002,M142-C005 M142-C006,M142-C162 M142-C163	4Y7161M01	1	1			
		M142-C100,M142-C200 M142-C202,M142-C203 M142-C204	4C0737M01	1	1			
		M142-C150,M142-C250 M142-C251,M142-C252 M142-C253,M142-C254	4C0688M01	1	1			
26	PIPE(A) - HOT	M142,M142-C001 M142-C002,M142-C005 M142-C006,M142-C162 M142-C163	4Y7162M01	1	1			
		M142-C100,M142-C200 M142-C202,M142-C203 M142-C204	4C0738M01	1	1			
		M142-C150,M142-C250 M142-C251,M142-C252 M142-C253,M142-C254	4C0689M01	1	1			
27	STRAINER		P00008-01	1	1			
28	HOT GAS VALVE		P02539-01	1	1			

MODEL: IM-65NE(-25,LM,-LM103,-Q) IM-65NS(-Q,-LM)				TITLE: B.REFRIGERATION ASSY				
INDEX NO.	DESCRIPTION	MATERIAL OR MODEL NUMBER	PART NUMBER	REQ'D NUMBER				
				P-1 Q-0	Q-1			
29	PIPE(C) - HIGH SIDE	M142,M142-C001 M142-C002,M142-C005 M142-C006,M142-C162 M142-C163	4Y7163M01	1	1			
		M142-C100,M142-C150 M142-C200,M142-C202 M142-C203,M142-C204 M142-C250,M142-C251 M142-C252,M142-C253 M142-C254	4C0690M01	1	1			
30	DRIER		P03584-01	1	1			
31	TIE		P05042-01	2	2			
			457167-01	2	2			
		M142-C100,M142-C150 M142-C200,M142-C202 M142-C203,M142-C204 M142-C250,M142-C251 M142-C252,M142-C253 M142-C254	C06256-01	2	2			
32	PROSESS PIPE	M142,M142-C001 M142-C002,M142-C005 M142-C006,M142-C162 M142-C163	4Y7164M01	1	1			
		M142-C100,M142-C200 M142-C202,M142-C203 M142-C204	4C0727M01	1	1			
		M142-C150,M142-C250 M142-C251,M142-C252 M142-C253,M142-C254	4C0691M01	1	1			
33	EVAPORATOR	M142,M142-C100 M142-C162,M142-C200 M142-C202,M142-C203 M142-C204	3E0053G01	1	1			
		M142-C001	3E0048G01	1	-			
			3H6803G02	-	1			
		M142-C163	3E0048G01	1	1			
		M142-C002	2E0060G01	1	-			
			3H4407G01	-	1			
		M142-C005	3H4562G01	1	1			
		M142-C006	3H5806G01	1	1			
M142-C150,M142-C250 M142-C251,M142-C252 M142-C253,M142-C254	3C1359G01	1	1					

MODEL: IM-65NE(-25,LM,-LM103,-Q) IM-65NS(-Q,-LM)				TITLE: B.REFRIGERATION ASSY				
INDEX NO.	DESCRIPTION	MATERIAL OR MODEL NUMBER	PART NUMBER	REQ'D NUMBER				
				P-1 Q-0	Q-1			
34	HOLDER - THERMISTOR	M142,M142-C001 M142-C002,M142-C005 M142-C006,M142-C162 M142-C163	315479-01	1	1			
		M142-C100,M142-C150 M142-C200,M142-C202 M142-C203,M142-C204 M142-C250,M142-C251 M142-C252,M142-C253 M142-C254	3H9642-01	1	1			
35	TRUSS HEAD TAPPING SCREW (S-TITE)		FTS0408M0	1	1			
36	HEAT EXCHANGER	M142,M142-C162	3C1146G03	1	1			
		M142-C001,M142-C002 M142-C163	3C1146G01	1	1			
		M142-C006	3C1146G02	1	1			
		M142-C100,M142-C200 M142-C202,M142-C203 M142-C204	3C1417G01	1	1			
		M142-C150,M142-C250 M142-C251,M142-C252 M142-C253,M142-C254	3C1317G01	1	1			
37	PIPE(B) - HOT	M142,M142-C001 M142-C002,M142-C005 M142-C006,M142-C162 M142-C163	3C1152G01	1	1			
		M142-C100,M142-C200 M142-C202,M142-C203 M142-C204	3C1418G01	1	1			
		M142-C150,M142-C250 M142-C251,M142-C252 M142-C253,M142-C254	3C1318G01	1	1			
38	INSULATION TUBE		H81525670	1	1			
39	INSULATION TUBE		H81020730	1	1			
40	NYLON TIE	CV-100	7920-0002	1	1			
41	PIPE(A) - LOW SIDE	M142,M142-C001 M142-C002,M142-C005 M142-C006,M142-C162 M142-C163	3Y5607G01	1	1			
		M142-C100,M142-C200 M142-C202,M142-C203 M142-C204	3C1419G01	1	1			
		M142-C150,M142-C250 M142-C251,M142-C252 M142-C253,M142-C254	3C1315G01	1	1			
42	TIE	CV-100	7920-0002	4	4			

MODEL: IM-65NE(-25,LM,-LM103,-Q) IM-65NS(-Q,-LM)			TITLE: B.REFRIGERATION ASSY					
INDEX NO.	DESCRIPTION	MATERIAL OR MODEL NUMBER	PART NUMBER	REQ'D NUMBER				
				P-1 Q-0	Q-1			
43	BARRIER	M142,M142-C001 M142-C002,M142-C005 M142-C006,M142-C162 M142-C163	3Z0569M01	1	1			
		M142-C100,M142-C150 M142-C200,M142-C202 M142-C203,M142-C204 M142-C250,M142-C251 M142-C252,M142-C253 M142-C254	3C1316M01	1	1			
44	WIRE SADDLE	M142-C005,M142-C006 M142-C100,M142-C150 M142-C200,M142-C202 M142-C203,M142-C204 M142-C250,M142-C251 M142-C252,M142-C253 M142-C254	428060-02	1	1			
45	CORD RELIEF	M142-C150,M142-C250 M142-C251,M142-C252 M142-C253,M142-C254	4A3264-01	1	1			
46	THERMISTOR - CUBE CONTROL	M142,M142-C001 M142-C002,M142-C005 M142-C006,M142-C162 M142-C163	P00350-03	1	1			
47	LOCKRING STOPPER	M142,M142-C001 M142-C002,M142-C005 M142-C006,M142-C162 M142-C163	P01677-01	1	1			
48	BOLT		C05825-01	4	4			

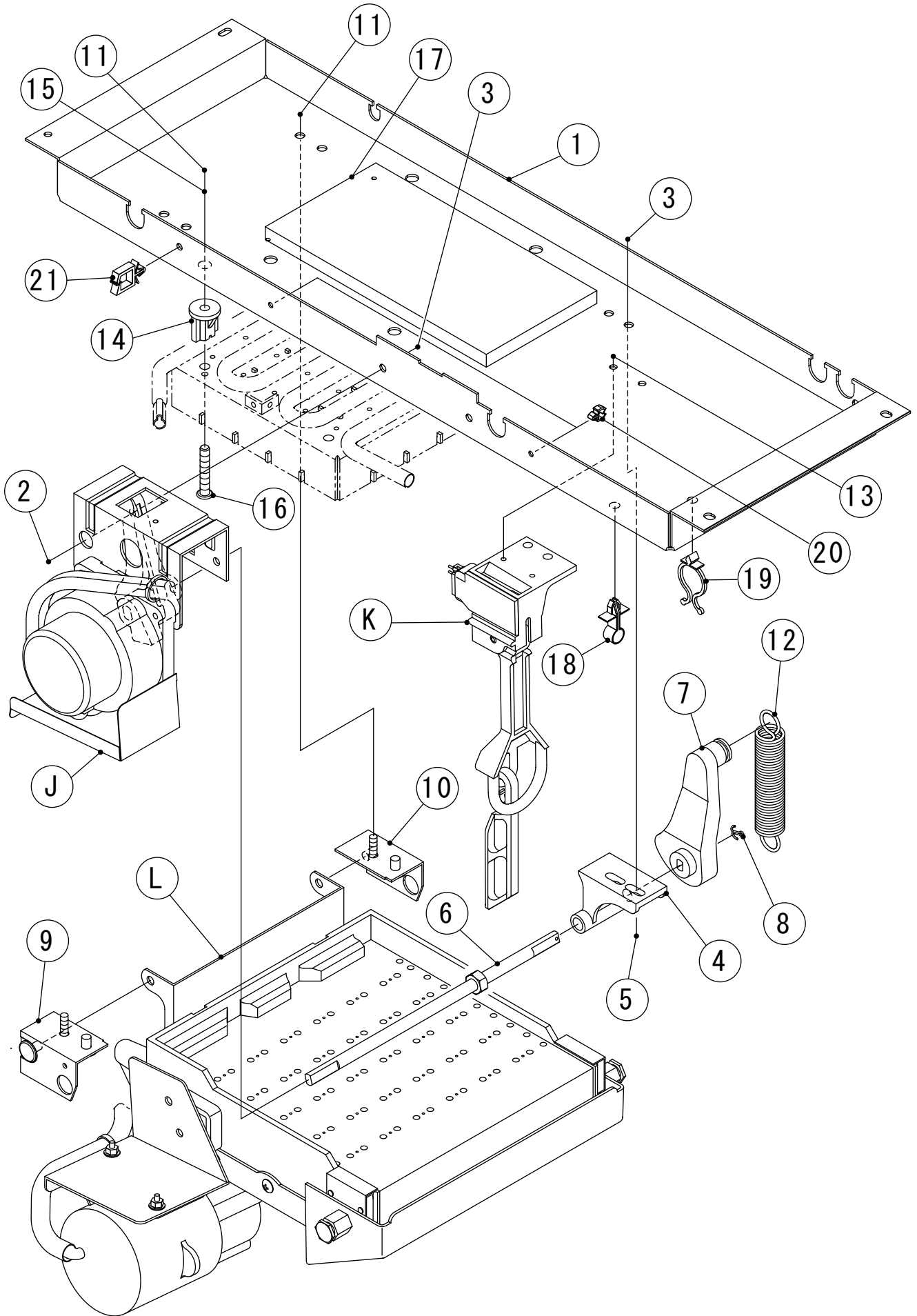


MODEL: IM-65WNE(-25)				TITLE: B.REFRIGERATION ASSY				
INDEX NO.	DESCRIPTION	MATERIAL OR MODEL NUMBER	PART NUMBER	REQ'D NUMBER				
				P-1 Q-0	Q-1			
1	BASE		1C0767M01	1	1			
2	COMPRESSOR		P02617-01	1	1			
3	STARTING RELAY		P02619-01	4	4			
4	STARTING CAPACITOR		P02611-01	1	1			
5	CORD RELIEF		4A3264-01	-	-			
6	HERMETIC TERMINAL COVER		P03143-01	1	1			
7	RUBBER GROMMET		P02608-01	1	1			
8	WASHER		P02606-01	-	-			
9	PIN		P02605-01	-	-			
10	CLAMP		P02607-01	-	-			
11	BRACKET - CONDENSER		4H5731-01	2	2			
12	FLANGE BOLT (C-TITE)		FTR0408M0	7	7			
13	CONDENSER - WATER COOLING		2X1106G01	1	1			
14	CLAMP(B) - CONDENSER		4H0622-01	3	3			
15	T2 TRUSS HEAD SCREW		FT20408F0	3	3			
16	EVAPORATOR	M142-C003	3E0048G01	1	-			
			3H6803G02	-	1			
		M142-C004	2E0060G01	1	-			
			3H4407G01	-	1			
17	FITTING(P)		3Y0747-01	2	2			
18	NUT (A) - FITTING		415713-03	2	2			
19	TAPPERED PACKING		415715-01	2	2			
20	BRACKET - WATER REGURATOR		4X5632-01	-	-			
21	WATER REGULATOR		P04020-01	1	1			
22	TOP HEAD SCREW		FSP0406S0	-	-			
23	BRACKET - HOT GAS VALVE		4H5186-01	-	-			
24	HOT GAS VALVE		P02539-01	1	1			
25	STRAINER		P00008-01	1	1			
26	PIPE(C) - WATER		4Y7391M01	1	1			
27	NUT - FLARE		403695-01	1	1			
28	PIPE(A) - WATER		4Y7392G01	1	1			
29	PIPE(B) - WATER		4Y7393M01	1	1			
30	NUT - FLARE		403695-01	1	1			
31	TEE		420041-03	2	2			
32	PIPE(B) - HIGH SIDE		4Y7395M01	1	1			
33	TEE - 6.4		417394-01	1	1			
34	PIPE(A) - HIGH SIDE		4Y7394M01	1	1			

MODEL: IM-65WNE(-25)				TITLE: B.REFRIGERATION ASSY				
INDEX NO.	DESCRIPTION	MATERIAL OR MODEL NUMBER	PART NUMBER	REQ'D NUMBER				
				P-1 Q-0	Q-1			
35	PRESSURE SWITCH	R134a,R22,R404A	P06862-01	1	1			
36	PIPE(A) - HOT GAS		4Y7396M01	1	1			
37	SLEEVE		441322-01	1	1			
38	PIPE(C) - HIGH SIDE		4Y7397M01	1	1			
39	DRIER		P03584-01	1	1			
40	TIE		7920-0002	1	1			
41	HEAT EXCHANGER		3C1146G01	1	1			
42	PIPE(B) - HOT		3C1137G01	1	1			
43	INSULATION TUBE		H81020730	1	1			
44	TIE	CV-100	7920-0002	1	1			
45	INSULATION TUBE		H81020730	1	1			
46	PIPE(A) - LOW SIDE		3Y5934G01	1	1			
47	PIPE(B) - HOTGAS		3Y5935G01	1	1			
48	PROSESS PIPE		4Y7164M01	1	1			
49	INSULATION - CAP		H71020A55	1	1			
50	TIE	CV-100	7920-0002	4	4			
51	SCREW		P00840-01	-	-			
52	BRACKET FOR CAPACITOR		P02610-01	-	-			
53	TERMINAL BOARD		P02612-01	-	-			
54	MOTOR PROTECTOR		P02614-01	-	-			
55	Overload Protector Bracket		P03144-01	-	-			
56	SELF TAPPING SCREW M4-11		P02615-01	-	-			
57	SELF TAPPING SCRW M4-21		P02616-01	-	-			
58	HOLDER - THERMISTOR		315479-01	1	1			
59	TRUSS HEAD TAPPING SCREW (S-TITE)		FTS0408M0	1	1			
60	THERMISTOR - CUBE CONTROL		P00350-03	1	1			
61	LOCKRING STOPPER		P01677-01	1	1			
62	BOLT		C05825-01	4	4			

IM-65NE(-25)
IM-65WNE(-25)
IM-65NS

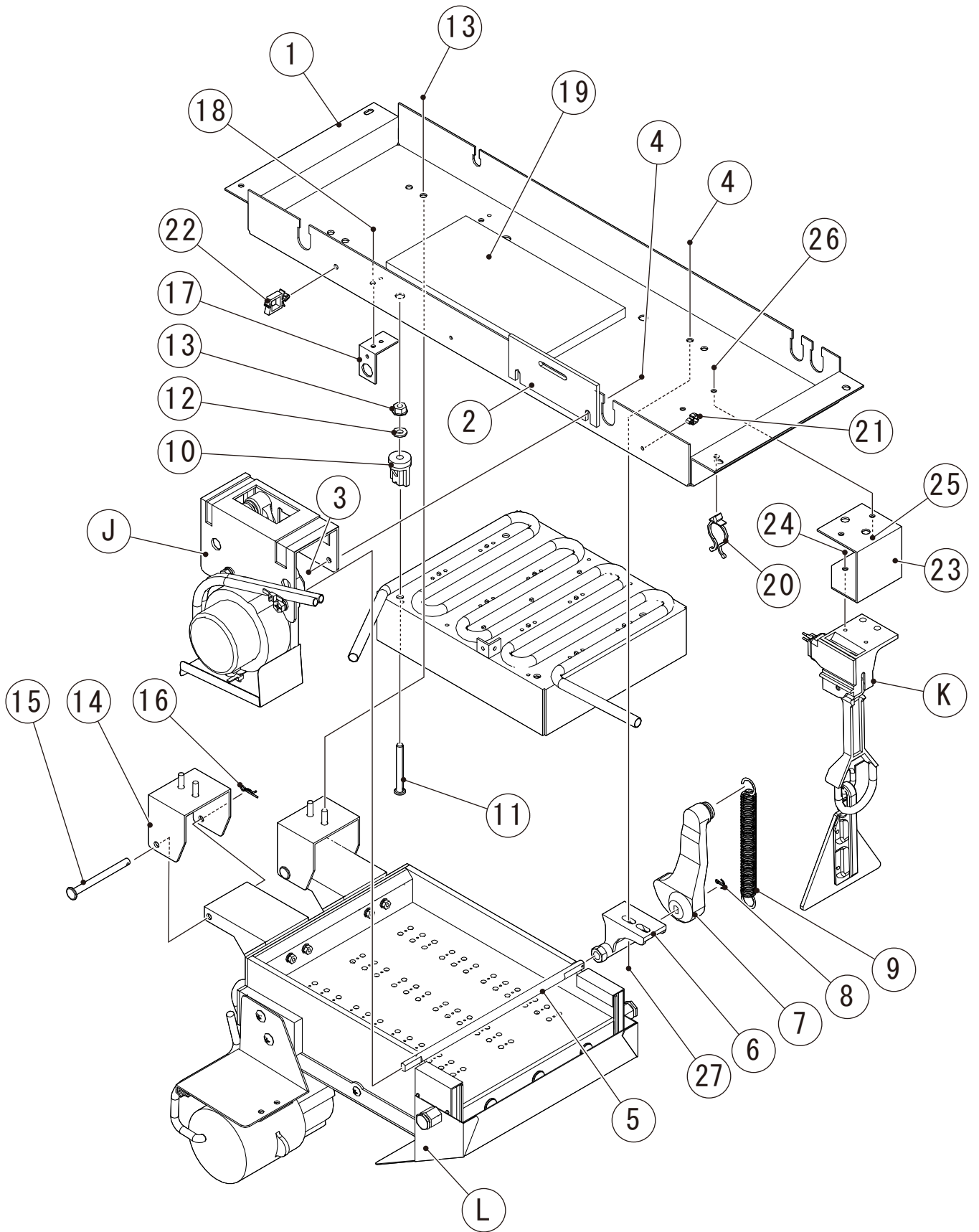
C. ICE MAKING MACHANISM ASSY (P-1) and later



MODEL: IM-65NE(-25) IM-65WNE(-25) IM-65NS			TITLE: C.ICE MAKING MECHANISM ASSY					
INDEX NO.	DESCRIPTION	MATERIAL OR MODEL NUMBER	PART NUMBER	REQ'D NUMBER				
				P-1				
J	ACTUATOR MOTOR ASSY		3Y8837A02	1				
		M142-C001,M142-C163	3C1381A01	1				
K	BIN CONTROL SWITCH		3H1537A02	1				
		M142-C001,M142-C163	3C1200A01	1				
L	WATER PAN ASSY	M142-C001,M142-C003	2X0656A02	1				
		M142-C002,M142-C004	2X0656001	1				
		M142-C001,M142-C163	2C1646A01	1				
1	BRACKET - ICE MAKING		2X0657M01	1				
	MECHANISM	M142-C002,M142-C004	2X0911M01	1				
2	TRUSS HEAD MACHINE SCREW		FST0512S0	2				
3	FLANGE NUT		FNHF05S0	4				
4	CAM SHAFT BEARING		307256-02	1				
5	HEX HEAD BOLT (SPRING WASHER AND FLAT WASHER)		FBK0516S0	2				
6	CAM SHAFT		4H2589G01	1				
7	CAM (B)		3H1389-01	1				
8	COTTER PIN		711S-0212	1				
9	BEARING (FRONT) - WATER PAN		4H2591G02	1				
10	BEARING (REAR) - WATER PAN		4H2592G02	1				
11	FLANGE NUT		FNHF06S0	6				
12	SPRING		4H2590-01	1				
		M142-C001,M142-C163	4C0090M01	1				
13	TRUSS HEAD TAPPING SCREW T2		FT20410M0	2				
14	SPACER		4H0471-01	1				
		M142-C002,M142-C004	4X5342-01	4				
15	WASHER		4H0777-01	4				
16	SCREW EVAPORATOR		4Y4922M02	4				
17	INSULATION (D)		4Y7347P01	1				
18	CLAMP		428644-02	1				
19	CLAMP		P04381-01	1				
20	CLAMP		426197-01	2				
21	WIRE SADDLE		428060-02	1				

IM-65NE-LM
IM-65NE-LM103
IM-65NS-LM

C. ICE MAKING MACHANISM ASSY (P-1) and later

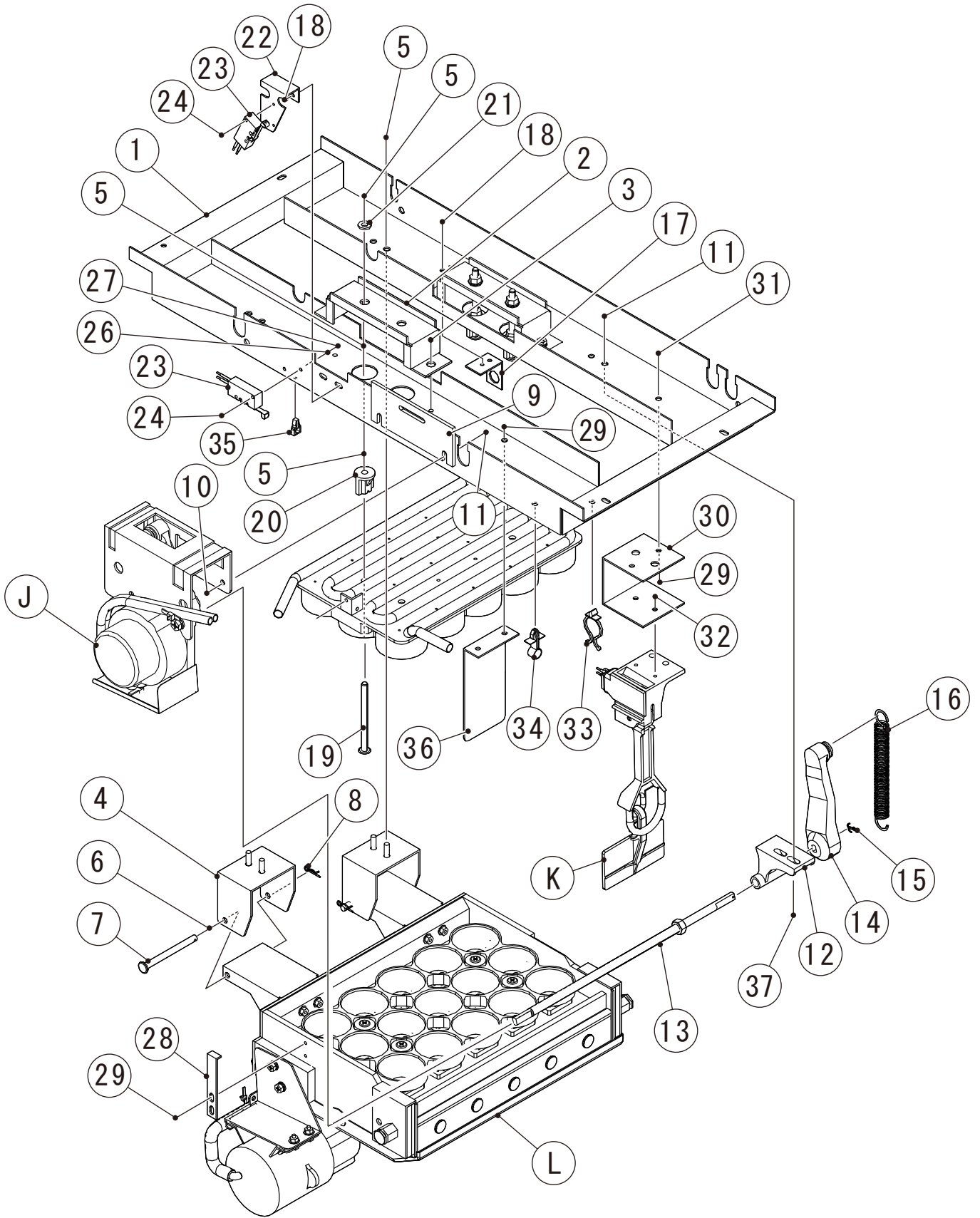


MODEL: IM-65NE-LM IM-65NE-LM103 IM-65NS-LM			TITLE: C.ICE MAKING MECHANISM ASSY					
INDEX NO.	DESCRIPTION	MATERIAL OR MODEL NUMBER	PART NUMBER	REQ'D NUMBER				
				P-1				
J	ACTUATOR MOTOR ASSY	M142-C005,M142-C006	3Y8847A02	1				
		M142-C150,M142-C250 M142-C251,M142-C252 M142-C253,M142-C254	3C1319A01	1				
K	BIN CONTROL SWITCH	M142-C005,M142-C006	3Y7467A01	1				
		M142-C150,M142-C250 M142-C251,M142-C252 M142-C253,M142-C254	3C1320A01	1				
L	WATER PAN ASSY	M142-C005,M142-C006	2X1614A01	1				
		M142-C150,M142-C250 M142-C251,M142-C252 M142-C253,M142-C254	2C1574A01	1				
1	BRACKET-ICE MAKING MECHANISM	M142-C005,M142-C006	2X1613M01	1				
	MECHANISM BASE	M142-C150,M142-C250 M142-C251,M142-C252 M142-C253,M142-C254	2C1573M01	1				
2	SPACER(C)	M142-C005,M142-C006	4Y6145P01	1				
		M142-C150,M142-C250 M142-C251,M142-C252 M142-C253,M142-C254	4C0701P01	1				
3	TRUSS HEAD SCREW		FST0516S0	2				
4	FLANGE NUT		FNHF05S0	4				
5	CAM SHAFT		4H2589G02	1				
6	CAM SHAFT BEARING		307256-02	1				
7	CAM (B)		315775-01	1				
8	CUTTER PIN		711S-0212	1				
9	SPRING		4H0287-01	1				
10	SPACER		4H1673G06	4				
11	SCREW EVAPORATOR		4Y4922M02	4				
12	WASHER		4H0777-01	4				
13	FLANGE NUT	M142-C005,M142-C006	FNHF06S0	8				
		M142-C150,M142-C250 M142-C251,M142-C252 M142-C253,M142-C254		6				
14	BEARING PLATE		3H3900G01	2				
15	SHAFT (A)		4H1184-01	2				
16	SNAP PIN		715S-0006	2				
17	BRACKET-PIPE	M142-C005,M142-C006	4H5585-01	2				
		M142-C150,M142-C250 M142-C251,M142-C252 M142-C253,M142-C254	4C0702M01	2				
18	HEX HEAD BOLT (SPRING WASHER AND FLAT WASHER)		FBK0410S0	2				

MODEL: IM-65NE-LM IM-65NE-LM103 IM-65NS-LM		TITLE: C.ICE MAKING MECHANISM ASSY						
INDEX NO.	DESCRIPTION	MATERIAL OR MODEL NUMBER	PART NUMBER	REQ'D NUMBER				
				P-1				
19	INSULATION (D)	M142-C005,M142-C006	4Y7347P01	1				
		M142-C150,M142-C250 M142-C251,M142-C252 M142-C253,M142-C254	4C0695P01	1				
20	CLAMP	M142-C005,M142-C006	P04381-01	1				
		M142-C150,M142-C250 M142-C251,M142-C252 M142-C253,M142-C254	427902-02	1				
21	CLAMP		426197-01	2				
22	WIRE SADDLE		428060-02	1				
23	BRACKET-SW	M142-C005,M142-C006	4Y8210M01	1				
		M142-C150,M142-C250 M142-C251,M142-C252 M142-C253,M142-C254	4C0703M01	1				
24	TRUSS HEAD TAPPING SCREW T2	M142-C005,M142-C006	FT20410S0	2				
		M142-C150,M142-C250 M142-C251,M142-C252 M142-C253,M142-C254	FT20410M0	2				
25	TRUSS HEAD SCREW		FST0412S0	2				
26	FLANGE NUT		FNHF04S0	2				
27	HEX HEAD BOLT (SPRING WASHER AND FLAT WASHER)		FBK0516S0	2				

IM-65NE-Q
IM-65NS-Q

C. ICE MAKING MACHANISM ASSY (P-1) and later



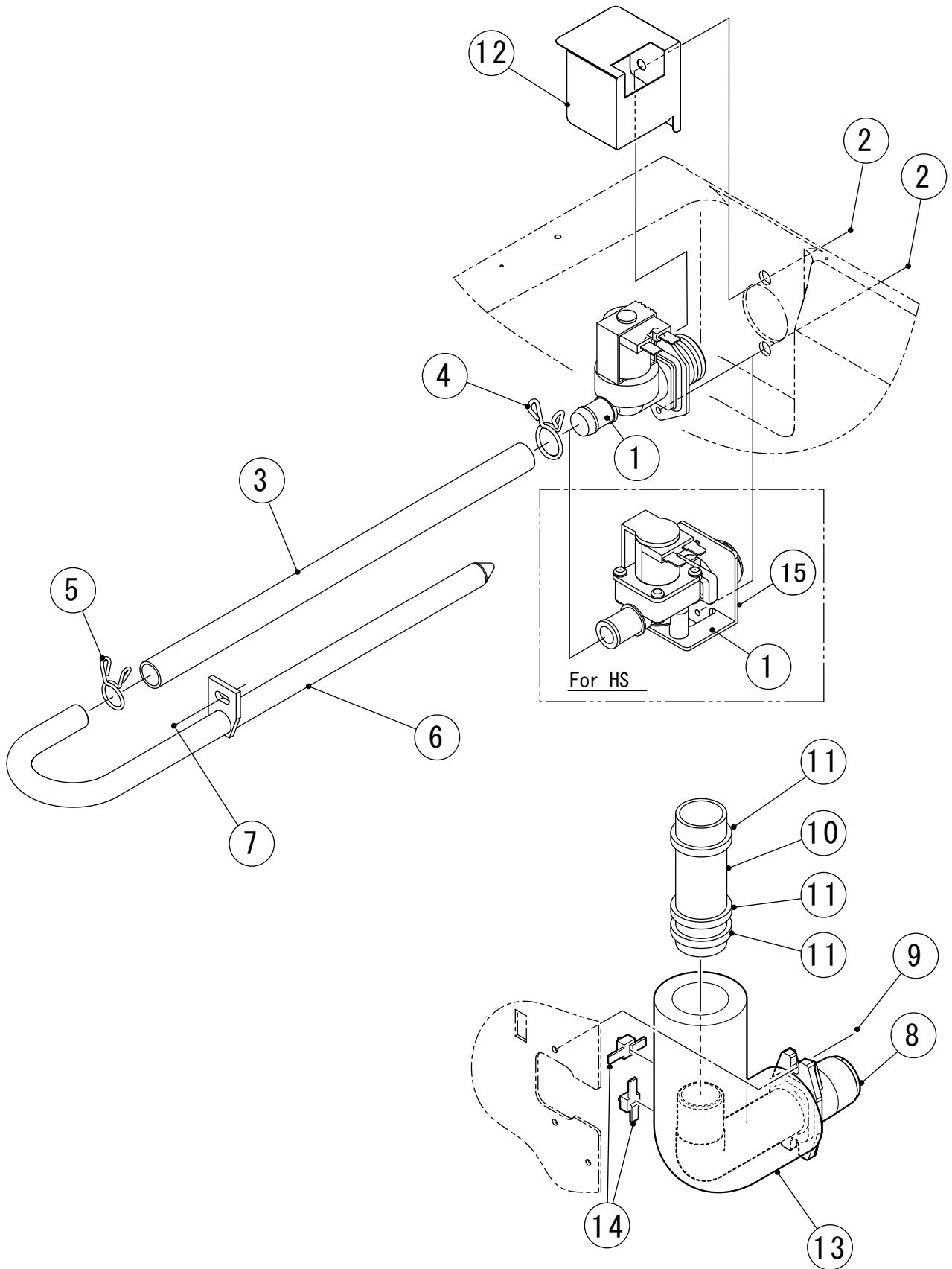
MODEL: IM-65NE-Q IM-65NS-Q		TITLE: C.ICE MAKING MECHANISM ASSY					
INDEX NO.	DESCRIPTION	MATERIAL OR MODEL NUMBER	PART NUMBER	REQ'D NUMBER			
				P-1			
J	ACTUATOR MOTOR ASSY	M142,M142-C162	3C1380A01	1			
		M142-C100,M142-C200 M142-C202,M142-C203 M142-C204	3C1403A01	1			
K	BIN CONTROL SWITCH	M142,M142-C162	3C1335A01	1			
		M142-C100,M142-C200 M142-C202,M142-C203 M142-C204	3C1405A01	1			
L	WATER PAN ASSY	M142,M142-C162	2X1646A02	1			
		M142-C100,M142-C200 M142-C202,M142-C203 M142-C204	2C1671A01	1			
1	MECHANISM BASE	M142,M142-C162	1H5358M01	1			
		M142-C100,M142-C200 M142-C202,M142-C203 M142-C204	1C0987M01	1			
2	BRACKET-EVAPORATOR	M142,M142-C162	3H5000-01	2			
		M142-C100,M142-C200 M142-C202,M142-C203 M142-C204	3C1402M01	2			
3	HEX HEAD BOLT (SPRING WASHER AND FLAT WASHER)		FBK0512S0	4			
4	BEARING-WATER PAN		3H5926G01	2			
5	FLANGE NUT		FNHF06S0	16			
6	FLAT WASHER		FWPL06N0	4			
7	SHAFT (A)		4H1184-01	2			
8	SNAP PIN		715S-0006	2			
9	SPACER(C)	M142,M142-C162	4Y6145P01	1			
		M142-C100,M142-C200 M142-C202,M142-C203 M142-C204	4C0701P01	1			
10	TRUSS HEAD SCREW		FST0516S0	2			
11	FLANGE NUT		FNHF05S0	4			
12	CAM SHAFT BEARING		307256-02	1			
13	CAM SHAFT		4H7247G01	1			
14	CAM(B)		3H5650-01	1			
15	CUTTER PIN		711S-0212	1			
16	SPRING		4H0287-01	1			
17	BRACKET-PIPE	M142,M142-C162	4H5585-01	2			
		M142-C100,M142-C200 M142-C202,M142-C203 M142-C204	4C0702M01	2			
18	HEX HEAD BOLT (SPRING WASHER AND FLAT WASHER)		FBK0410S0	4			
19	SCREW-EVAPORATOR MOUNTING		4H5788-01	4			

MODEL: IM-65NE-Q IM-65NS-Q		TITLE: C.ICE MAKING MECHANISM ASSY						
INDEX NO.	DESCRIPTION	MATERIAL OR MODEL NUMBER	PART NUMBER	REQ'D NUMBER				
				P-1				
20	SPACER		4H0471-01	4				
21	WASHER		4H0777-01	4				
22	BRACKET(A)-SW	M142,M142-C162	4Y8236M01	1				
		M142-C100,M142-C200 M142-C202,M142-C203 M142-C204	4C0728M01	1				
23	MICRO SWITCH		456432-02	2				
		M142,M142-C162	P05714-02	2				
24	PAN HEAD MACHINE SCREW (SPRING WASHER AND FLAT WASHER)		FSK0320S0	4				
26	FLAT WASHER		FWPL03S0	2				
27	NUT		FNH103S0	2				
28	LEVER	M142,M142-C162	485851M01	1				
		M142-C100,M142-C200 M142-C202,M142-C203 M142-C204	4C0729M01	1				
29	HEX HEAD BOLT (SPRING WASHER AND FLAT WASHER)		FBK0412S0	6				
30	BRACKET-BIN SW	M142,M142-C162	485852M01	1				
		M142-C100,M142-C200 M142-C202,M142-C203 M142-C204	4C0730M01	1				
31	FLANGE NUT		FNHF04S0	2				
32	T2 TRUSS HEAD SCREW	M142,M142-C162	FT20410M0	2				
		M142-C100,M142-C200 M142-C202,M142-C203 M142-C204	FT20410S0	2				
33	CLAMP	M142,M142-C162	P04381-01	1				
		M142-C100,M142-C200 M142-C202,M142-C203 M142-C204	427902-02	1				
34	CLAMP		428644-02	1				
35	CLAMP		426197-01	1				
36	STOPPER - ICE GUIDE	M142,M142-C162	4Y8238M01	1				
		M142-C100,M142-C200 M142-C202,M142-C203 M142-C204	4C0731M01	1				
37	HEX HEAD BOLT (SPRING WASHER AND FLAT WASHER)		FBK0516S0	2				

IM-65NE(-25-LM, LM103, -Q)
IM-65WNE(-25)
IM-65NS(-Q, -LM)

D. WATER CIRCUIT ASSY

(P-1) and later



MODEL: IM-65NE(-25,-LM,-LM103,-Q) IM-65WNE(-25) IM-65NS(-Q,-LM)				TITLE: D.WATER CIRCUIT ASSY				
INDEX NO.	DESCRIPTION	MATERIAL OR MODEL NUMBER	PART NUMBER	REQ'D NUMBER				
				P-1				
1	WATER VALVE	M142,M142-C100 M142-C162	P03196-01	1				
		M142-C001,M142-C002 M142-C003,M142-C004 M142-C005,M142-C006 M142-C150,M142-C163	P02056-01	1				
		M142-C200,M142-C202 M142-C203,M142-C204	P05057-01	1				
		M142-C250,M142-C251 M142-C252,M142-C253 M142-C254	P04823-01	1				
2	HEX HEAD BOLT		FBX0408S0	2				
3	SILICONE HOSE	M142,M142-C100 M142-C162,M141-C200 M142-C202,M142-C203 M142-C204	4Y6912R10	1				
		M142-C001,M142-C002 M142-C003,M142-C004 M142-C005,M142-C006 M142-C163	4Y6912R04	1				
		M142-C150,M142-C250 M142-C251,M142-C252 M142-C253,M142-C254	H11215310	1				
4	HOSE CLAMP	M142-C002 M142-C003,M142-C004 M142-C006	435934-03	1				
		M142,M142-C001 M142-C005,M142-C100 M142-C150,M142-C162 M142-C163,M142-C200 M142-C202,M142-C203 M142-C204,M142-C250 M142-C251,M142-C252 M142-C253,M142-C254	P05613-02	1				
5	HOSE CLAMP	M142-C001,M142-C002 M142-C003,M142-C004 M142-C006	435934-02	1				
		M142,M142-C001 M142-C005,M142-C100 M142-C150,M142-C162 M142-C163,M142-C200 M142-C202,M142-C203 M142-C204,M142-C250 M142-C251,M142-C252 M142-C253,M142-C254	P05613-01	1				
6	WATER SUPPLY PIPE	M142,M142-C100 M142-C162,M142-C200 M142-C202,M142-C203 M142-C204	3Y4547G01	1				
		M142-C001,M142-C002 M142-C004,M142-C163	3H9530G01	1				
		M142-C005,M142-C006 M142-C150,M142-C250 M142-C251,M142-C252 M142-C253,M142-C254	3Y5331G01	1				
7	TRUSS HEAD MACHINE SCREW		FST0408S0	1				
8	DRAIN PIPE		3H0394-01	1				

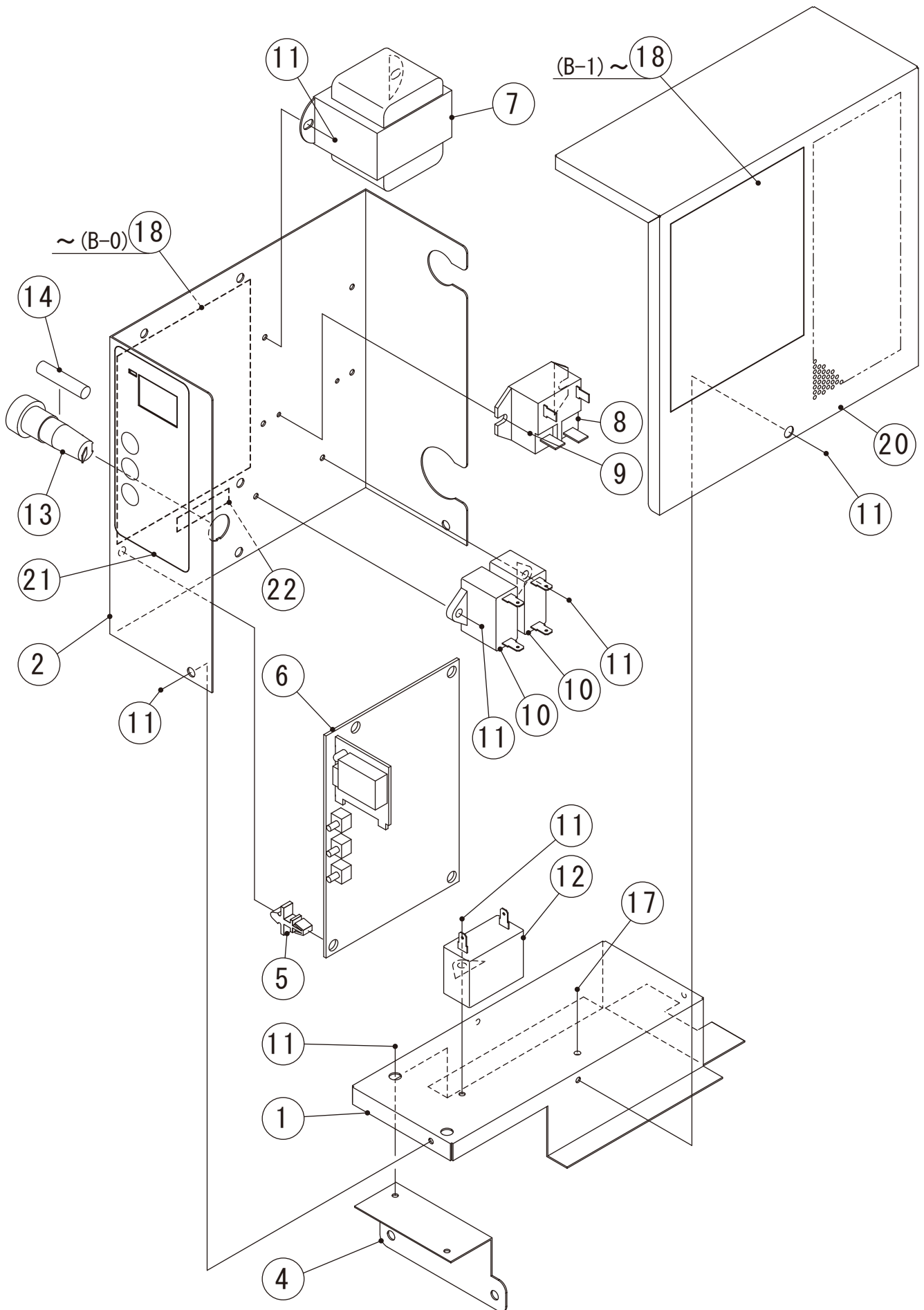
MODEL: IM-65NE(-25,-LM,-LM103,-Q) IM-65WNE(-25) IM-65NS(-Q,-LM)				TITLE: D.WATER CIRCUIT ASSY				
INDEX NO.	DESCRIPTION	MATERIAL OR MODEL NUMBER	PART NUMBER	REQ'D NUMBER				
				P-1				
9	TRUSS HEAD TAPPING SCREW T2	M142-C001,M142-C002 M142-C003,M142-C004 M142-C005,M142-C006 M142-C163	FT20408S0	2				
		M142,M142-C100 M142-C150,M142-C162 M142-C200,M142-C202 M142-C203,M142-C204 M142-C250,M142-C251 M142-C252,M142-C253 M142-C254	FT20410M0	2				
10	PVC Hose - FSA		HD2226080	1				
11	TIE	CV-150 M142,M142-C100 M142-C162,M142-C200 M142-C202,M142-C203 M142-C204	7920-0003	3				
		M142-C001,M142-C002 M142-C003,M142-C004 M142-C005,M142-C006 M142-C150,M142-C163 M142-C250,M142-C251 M142-C252,M142-C253 M142-C254	7920-0003	1				
12	COVER-WATER VALVE	M142,M142-C002 M142-C003,M142-C004 M142-C006,M142-C162	3Y6277M01	1				
13	INSULATION TUBE	M142,M142-C162	3Y7529Z01	1				
		M142-C001,M142-C002 M142-C003,M142-C004 M142-C005,M142-C006 M142-C150,M142-C163 M142-C250,M142-C251 M142-C252,M142-C253 M142-C254	H72949140	1				
		M142-C100,M142-C200 M142-C202,M142-C203 M142-C204	3C1408Z01	1				
		M142,M142-C002 M142-C003,M142-C004 M142-C006,M142-C100 M142-C162	7920-0010	2				
M142-C001,M142-C005 M142-C150,M142-C163 M142-C200,M142-C202 M142-C203,M142-C204 M142-C250,M142-C251 M142-C252,M142-C253 M142-C254	1							
15	BRACKET (S) - WV	M142-C200,M142-C202 M142-C203,M142-C204 M142-C250,M142-C251 M142-C252,M142-C253 M142-C254	4C0630M01	1				

MODEL: IM-65NE(-25,-LM,-LM103,-Q) IM-65WNE(-25) IM-65NS(-Q,-LM)			TITLE: D.WATER CIRCUIT ASSY						
INDEX NO.	DESCRIPTION	MATERIAL OR MODEL NUMBER	PART NUMBER	REQ'D NUMBER					
				P-1					
16	T2 TRUSS HEAD SCREW	M142-C200,M142-C202 M142-C203,M142-C204 M142-C250,M142-C251 M142-C252,M142-C253 M142-C254	FT20408S0	2					

IM-65NE(-25, -LM, -LM103, -Q)
IM-65WNE(-25)
IM-65NS(-Q, -LM)

E. CONTROL BOX ASSY

(P-1) and later



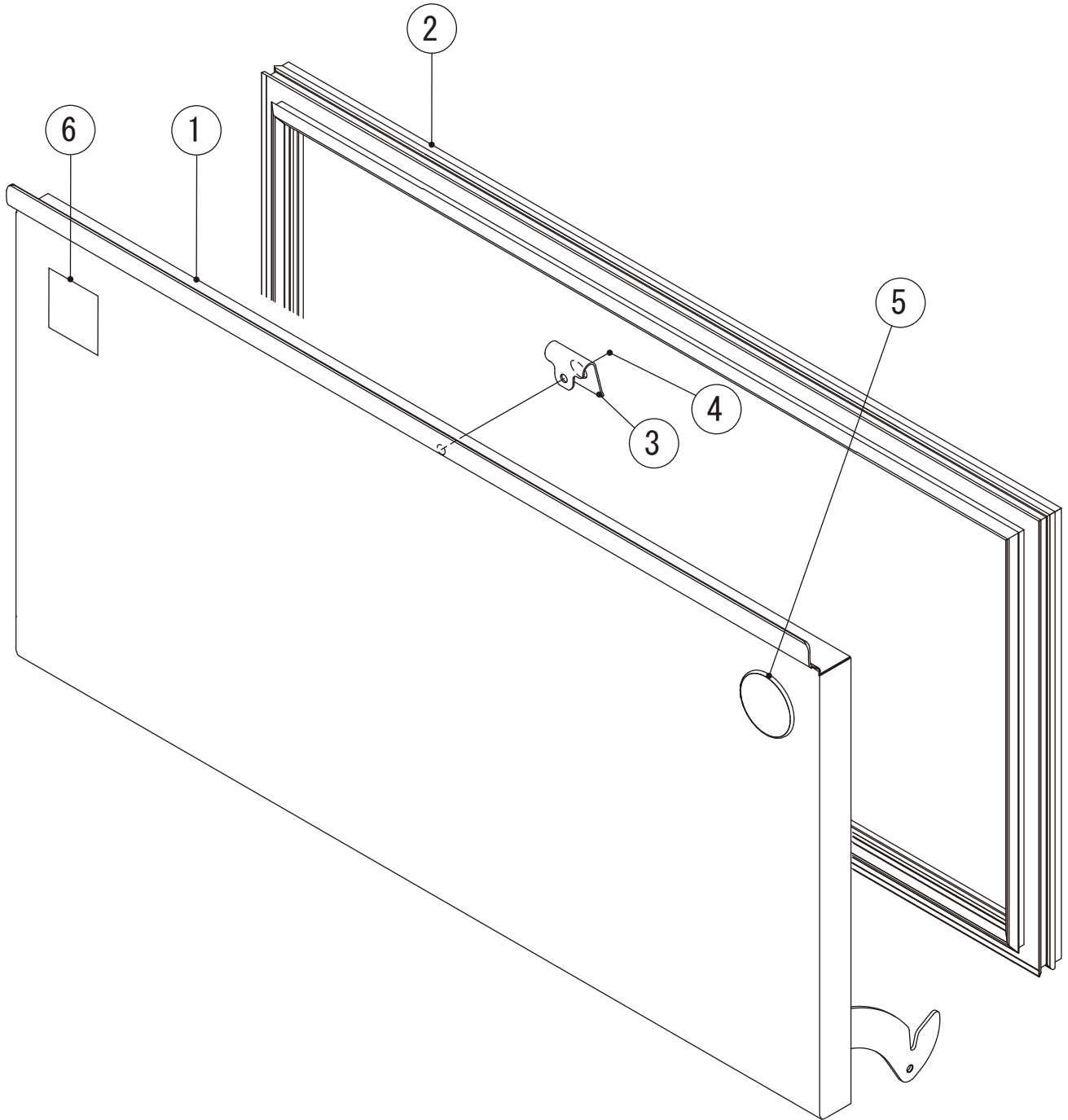
MODEL: IM-65NE(LM,-LM103,-Q) IM-65WNE(-25) IM-65NS(-Q,-LM)			TITLE: E.CONTROL BOX ASSY					
INDEX NO.	DESCRIPTION	MATERIAL OR MODEL NUMBER	PART NUMBER	REQ'D NUMBER				
				P-1				
1	CONTROL BOX (A)		3Y5611M01	1				
		M142-C100,M142-C150 M142-C200,M142-C202 M142-C203,M142-C204 M142-C250,M142-C251 M142-C252,M142-C253 M142-C254	3C1321M01	1				
2	CONTROL BOX(B)		2X1216M01	1				
		M142-C100,M142-C150 M142-C200,M142-C202 M142-C203,M142-C204 M142-C250,M142-C251 M142-C252,M142-C253 M142-C254	2C1576M01	1				
4	PLATE - BOX		4Y7215M01	1				
		M142-C100,M142-C150 M142-C200,M142-C202 M142-C203,M142-C204 M142-C250,M142-C251 M142-C252,M142-C253 M142-C254	4C0697M01	1				
5	BOARD SUPPORT		P04204-01	4				
		M142,M142-C005 M142-C100,M142-C150 M142-C162,M142-C163 M142-C200,M142-C202 M142-C203,M142-C204 M142-C250,M142-C251 M142-C252,M142-C253 M142-C254	414929-02	4				
6	CONTROLLER BOARD		P01873-02	1				
		M142-C150,M142-C250 M142-C251,M142-C252 M142-C253,M142-C254	P01873-01	1				
7	TRANSFORMER		P02714-01	1				
8	POWER RELAY		P02203-02	1				
9	TRUSS HEAD TAPPING SCREW T2		431415-01	2				
10	CAPACITOR		P01870-01	2				
11	TRUSS HEAD TAPPING SCREW T2		FT20410F0	11				
12	CAPACITOR		P02158-01	1				
13	FUSE HOLDER		P02829-01	1				
14	FUSE		P04203-01	1				
17	TRUSS HEAD MACHINE SCREW		FST0408S0	1				
18	WIRING LABEL		3C0857L01	1				
		M142-C100	3C1420L01	1				
		M142-C150	3C1322L01	1				
		M142-C250,M142-C251 M142-C252,M142-C253 M142-C254	3C0857L01	1				

MODEL: IM-65NE(LM,-LM103,-Q) IM-65WNE(-25) IM-65NS(-Q,-LM)				TITLE: E.CONTROL BOX ASSY				
INDEX NO.	DESCRIPTION	MATERIAL OR MODEL NUMBER	PART NUMBER	REQ'D NUMBER				
				P-1				
20	CONTROL BOX COVER		3Y5612M01	1				
		M142-C100,M142-C150 M142-C200,M142-C202 M142-C203,M142-C204 M142-C250,M142-C251 M142-C252,M142-C253 M142-C254	3C1377M01	1				
21	CONTROL LABEL		481284L01	1				
		M142-C100,M142-C150	486335L01	1				
22	LABEL - FUSE		466798-01	1				

IM-65NE (-25, -LM, -LM103, -Q)
IM-65WNE (-25)
IM-65NS(-Q, -LM)

F. DOOR ASSY

(P-1) and later



MODEL: IM-65NE(-25,-LM,-LM103,-Q) IM-65WNE(-25) IM-65NS(-Q,-LM)			TITLE: F.DOOR ASSY					
INDEX NO.	DESCRIPTION	MATERIAL OR MODEL NUMBER	PART NUMBER	REQ'D NUMBER				
				P-1				
1	DOOR - INSULATION		2X0466G02	1				
		M142-C100,M142-C150 M142-C200,M142-C202 M142-C203,M142-C204 M142-C250,M142-C251 M142-C252,M142-C253 M142-C254	2C1577G01	1				
		M142-C162,M142-C163	2X0466002	1				
2	DOOR GASKET		3Y8291P03	1				
3	CATCH - SLOPE		4X7644-01	1				
4	TRUSS HEAD TAPPING SCREW T2		FT20408S0	1				
5	LABEL - PENGUIN		468184-01	-				
6	LABEL - HACCP		476519L01	-				

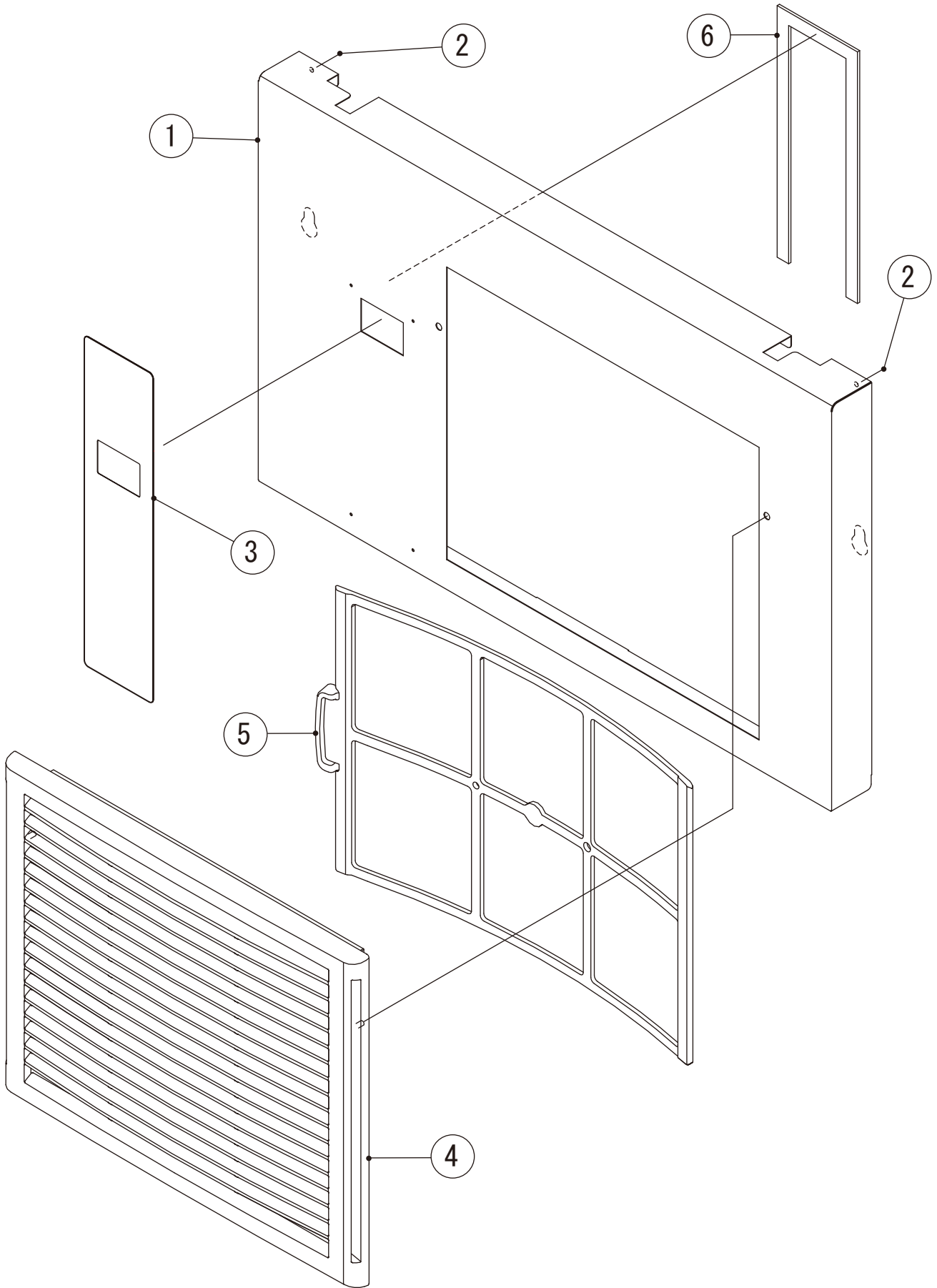
IM-65NE(-25, -LM, -LM103, -Q)

IM-65NWE(-25)

IM-65NS(-Q, -LM)

G. FRONT PANEL LOWER ASSY

(P-1) and later

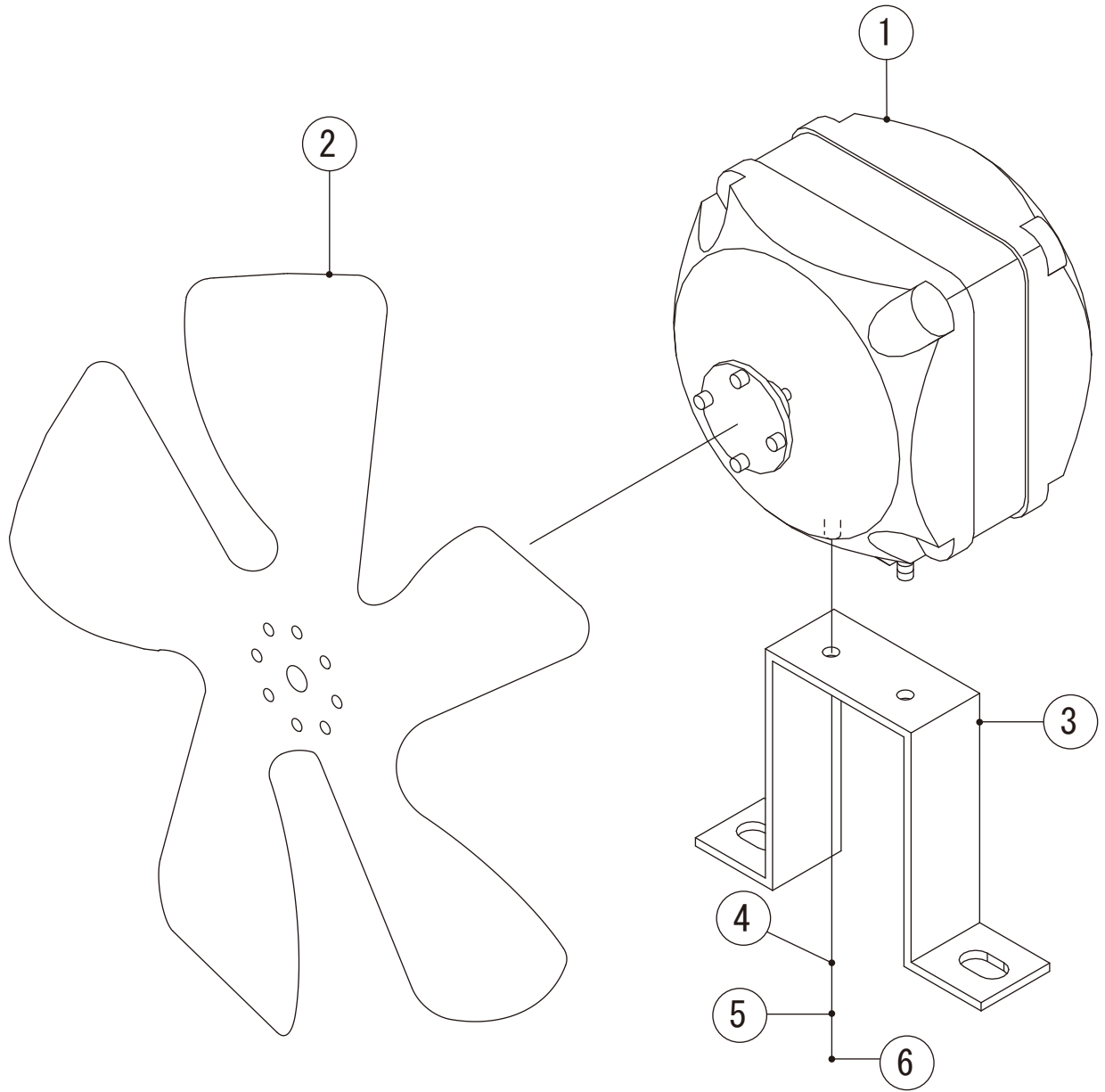


MODEL: IM-65NE(-25,-LM,-LM103,-Q) IM-65WNE(-25) IM-65NS(-Q,-LM)			TITLE: G.FRONT PANEL LOWER ASSY					
INDEX NO.	DESCRIPTION	MATERIAL OR MODEL NUMBER	PART NUMBER	REQ'D NUMBER				
				P-1				
1	FRONT PANEL(LO)		2X0440M02	1				
		M142-C100,M142-C150 M142-C200,M142-C202 M142-C203,M142-C204 M142-C250,M142-C251 M142-C252,M142-C253 M142-C254	2C1580M02	1				
2	POP RIVET	SSD42SSBS(t1.6 ~ 3.2)	7170-0002	2				
		M142,M142-C001 M142-C005,M142-C100 M142-C150,M142-C162 M142-C163,M142-C200 M142-C202,M142-C203 M142-C204,M142-C250 M142-C251,M142-C252 M142-C253,M142-C254	7170-0006	2				
3	OPERATION LABEL		375116L03	1				
4	LOUVER		1H4811P01	1				
5	AIR FILTER		2X0416G01	1				
6	SPONGE TAPE		3Y5555Z01	1				
	GASKET	M142-C100,M142-C150 M142-C200,M142-C202 M142-C203,M142-C204 M142-C250,M142-C251 M142-C252,M142-C253 M142-C254	C05836-01	1				

IM-65NE (-25, -LM, -LM103, -Q)
IM-65NWE (-25)
IM-65NS (-Q, -LM)

H. FAN MOTOR ASSY

(P-1) and later

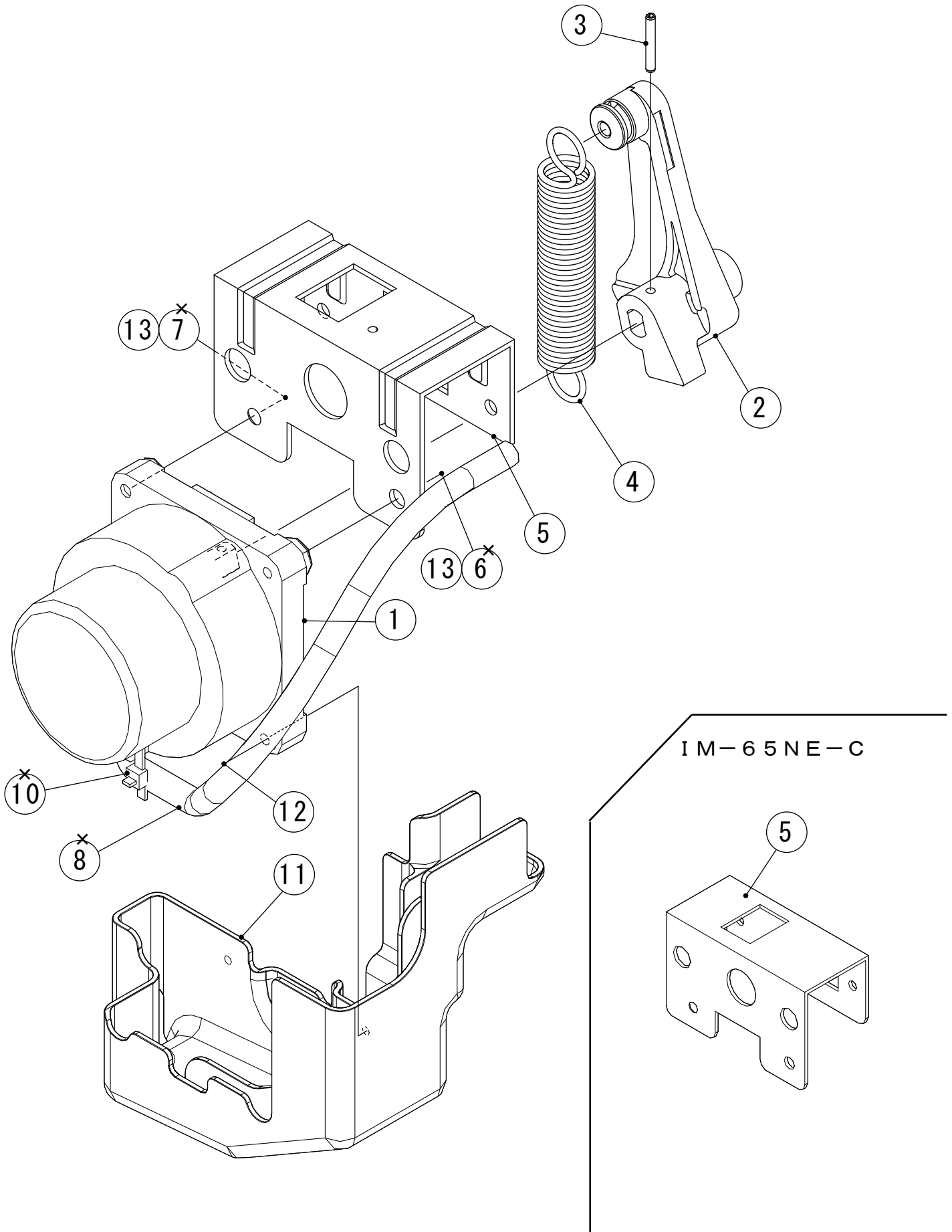


MODEL: IM-65NE(-25,-LM,-LM103,-Q) IM-65WNE(-25) IM-65NS(-Q,-LM)		TITLE: H.FAN MOTOR ASSY						
INDEX NO.	DESCRIPTION	MATERIAL OR MODEL NUMBER	PART NUMBER	REQ'D NUMBER				
				P-1				
1	FAN MOTOR		P05835-02	1				
		M142-C100,M142-C150 M142-C200,M142-C202 M142-C203,M142-C204 M142-C250,M142-C251 M142-C252,M142-C253 M142-C254	P00022-01	1				
2	FAN		P05866-01	1				
		M142-C100,M142-C150 M142-C200,M142-C202 M142-C203,M142-C204 M142-C250,M142-C251 M142-C252,M142-C253 M142-C254	P00031-01	1				
3	BRACKET - FM		P05872-01	1				
		M142-C100,M142-C150 M142-C200,M142-C202 M142-C203,M142-C204 M142-C250,M142-C251 M142-C252,M142-C253 M142-C254	451767-01	1				
4	FLAT WASHER		FWPL04S0	2				
5	SPRING WASHER		FWSP04S0	2				
6	NUT		FNH104S0	2				

IM-65NE(-25)
IM-65WNE(-25)
IM-65NS

J. ACTUATOR MOTOR ASSY

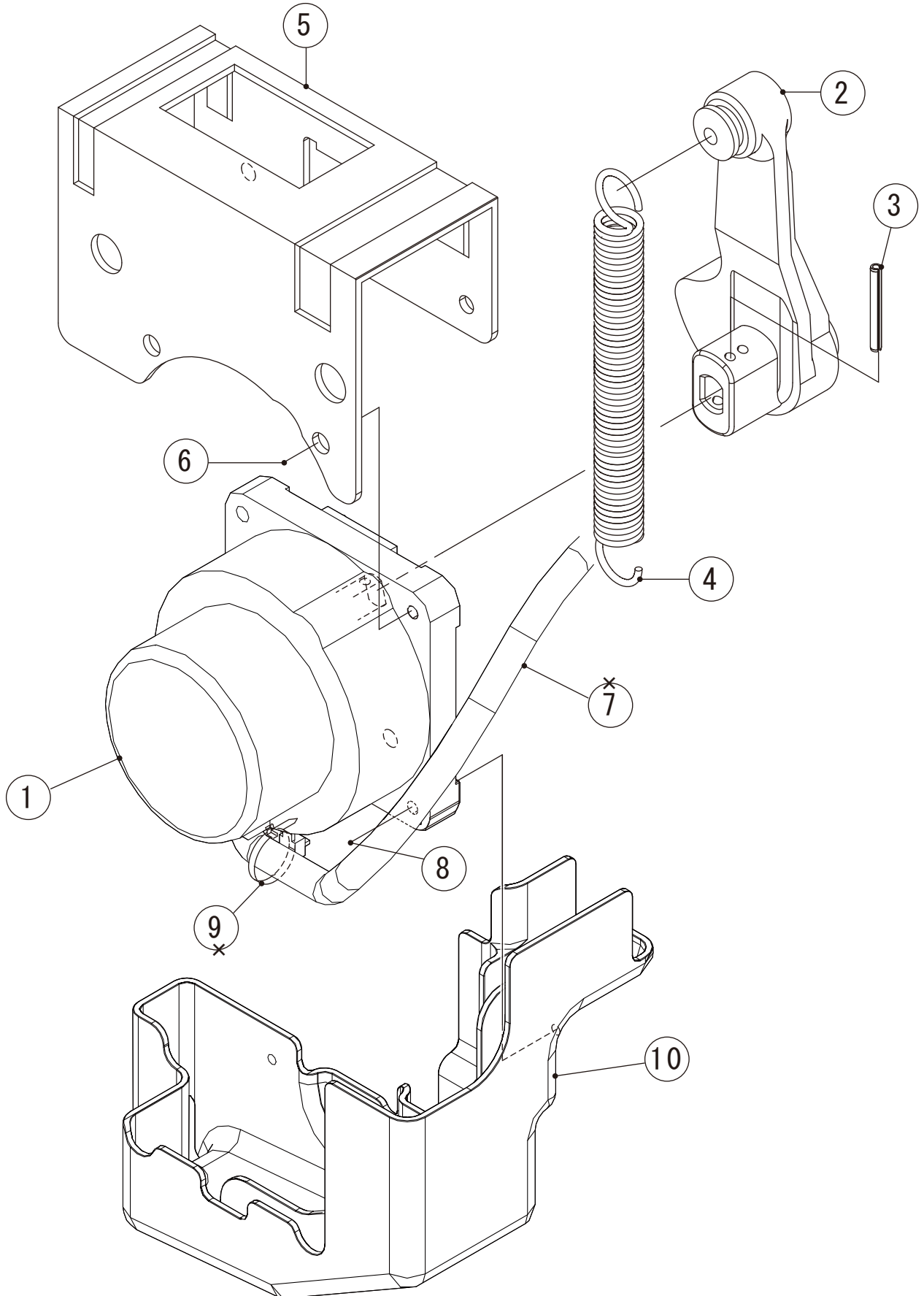
(P -1) and later



MODEL: IM-65NE(-25) IM-65WNE(-25) IM-65NS				TITLE: J.ACTUATOR MOTOR ASSY				
INDEX NO.	DESCRIPTION	MATERIAL OR MODEL NUMBER	PART NUMBER	REQ'D NUMBER				
				P-1				
1	ACTUATOR MOTOR	(50Hz)	4Y8998G01	1				
2	CAM (A)		3Y2277P01	1				
3	SPRING PIN		712S-0322	1				
4	SPRING		4H2590-01	1				
		M142,M142-C163	4C0090M01	1				
5	BRACKET - ACTUATOR MOTOR		3Y8832M01	1				
11	COVER - ACTUATOR MOTOR		1H4881P01	1				
12	T2 TRUSS HEAD SCREW		FT20416M0	2				
13	HEX HEAD BOLT (SPRING WASHER AND FLAT WASHER)		FBK0620S0	2				

IM-65NE-LM
IM-65NE-LM103
IM-65NS-LM

J. ACTUATOR MOTOR ASSY (P-1) and later



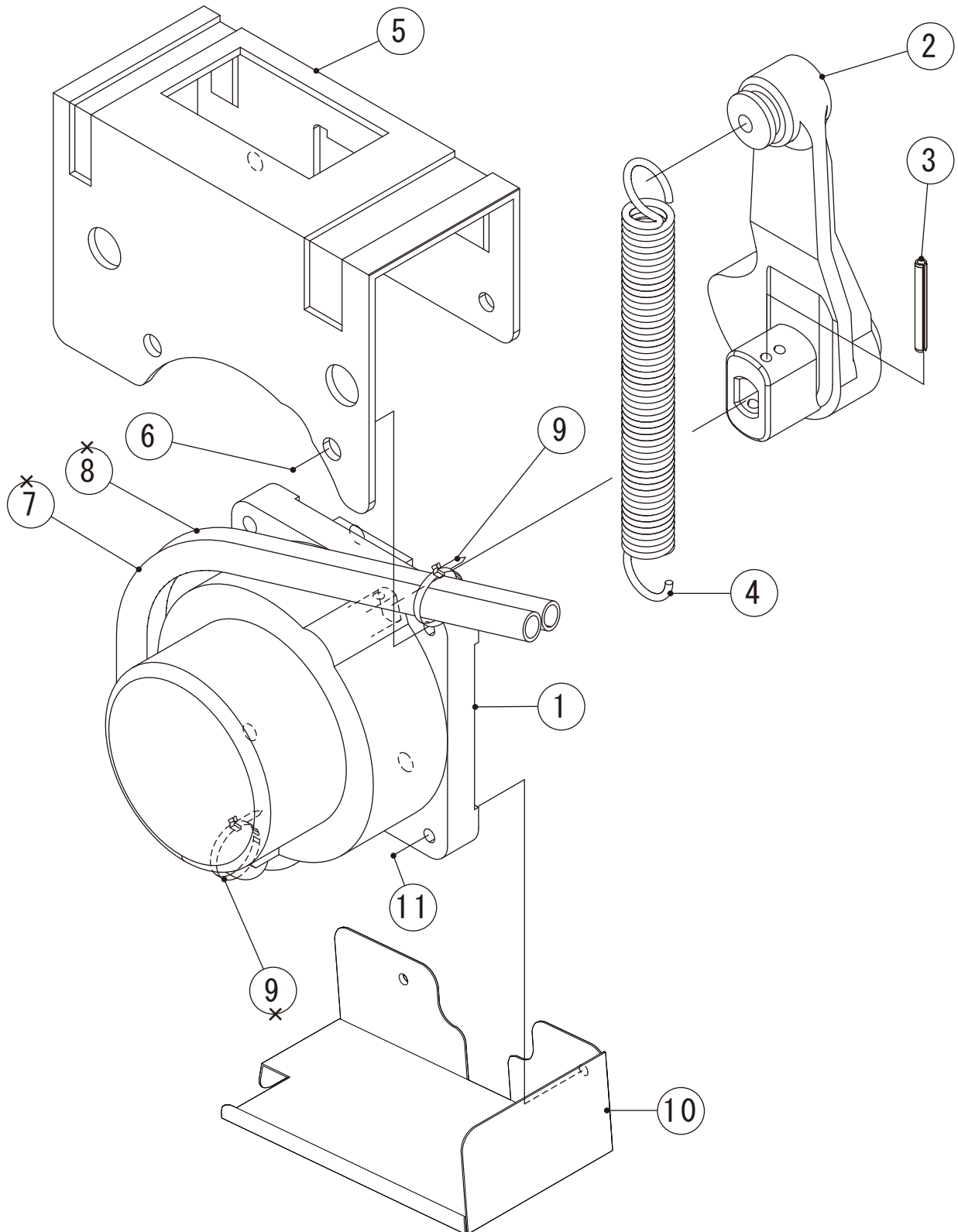
HE

MODEL: IM-65NE-LM IM-65NE-LM103 IM-65NS-LM		TITLE: J.ACTUATOR MOTOR ASSY						
INDEX NO.	DESCRIPTION	MATERIAL OR MODEL NUMBER	PART NUMBER	REQ'D NUMBER				
				P-1				
1	ACTUATOR MOTOR		4Y8998G01	1				
		M142-C150,M142-C250 M142-C251,M142-C252 M142-C253,M142-C254	481396G01	1				
2	CAM(A)		306543G03	1				
3	SPRING PIN 3*28		712S-0328	1				
4	SPRING		4H0287-01	1				
5	BRACKET - AM		3Y2924M01	1				
6	HEX HEAD BOLT (SPRING WASHER AND FLAT WASHER)		FBK0620S0	2				
8	T2 TRUSS HEAD SCREW		FT20416S0	2				
		M142-C150,M142-C250 M142-C251,M142-C252 M142-C253,M142-C254	FT20416M0	2				
10	COVER - ACTUATOR MOTOR		1H4881P01	1				

IM-65NE-Q
IM-65NS-Q

J. ACTUATOR MOTOR ASSY

(P-1) and later

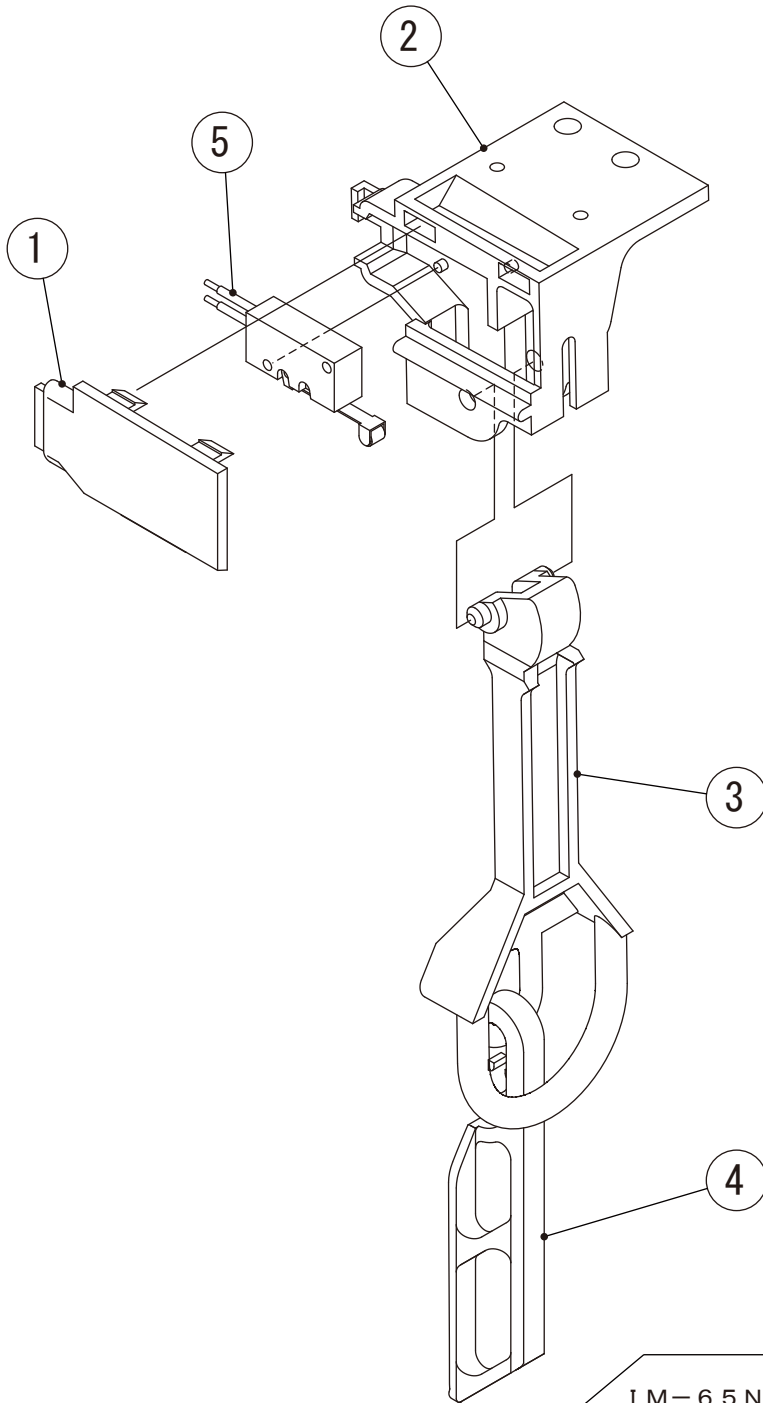


MODEL: IM-65NE-Q IM-65NS-Q			TITLE: J.ACTUATOR MOTOR ASSY					
INDEX NO.	DESCRIPTION	MATERIAL OR MODEL NUMBER	PART NUMBER	REQ'D NUMBER				
				P-1				
1	ACTUATOR MOTOR		4Y8998G01	1				
		M142-C100,M142-C200 M142-C202,M142-C203 M142-C204	481396G01	1				
2	CAM(A)		3H5648-02	1				
3	SPRING PIN 3*28		712S-0328	1				
4	SPRING		4H0287-01	1				
		M142,M142-C162	4C0088M01	1				
5	BRACKET - AM		3Y2924M01	1				
6	HEX HEAD BOLT (SPRING WASHER AND FLAT WASHER)		FBK0620S0	2				
9	TIE		7920-0003	1				
10	COVER - AM		3Y7525M01	1				
		M142-C100,M142-C200 M142-C202,M142-C203 M142-C204	3C1407M01	1				
11	HEX HEAD BOLT (SPRING WASHER AND FLAT WASHER)		FBK0416S0	2				

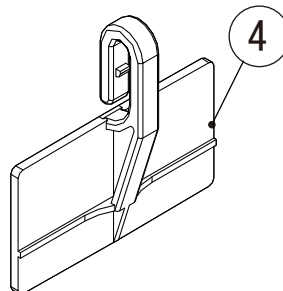
IM-65NE(-25, -LM, -LM103, -Q)
IM-65WNE(-25)
IM-65NS(-Q, -LM)

K. BIN CONTROL SWITCH

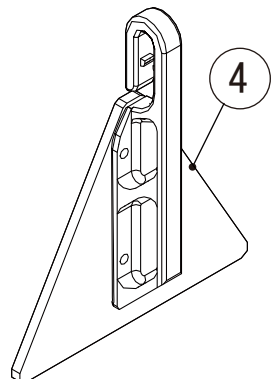
(P-1) and later



IM-65NE-Q
IM-65WNE-Q
IM-65NS-Q



IM-65NE-LM
IM-65NE-LM103
IM-65NS-LM

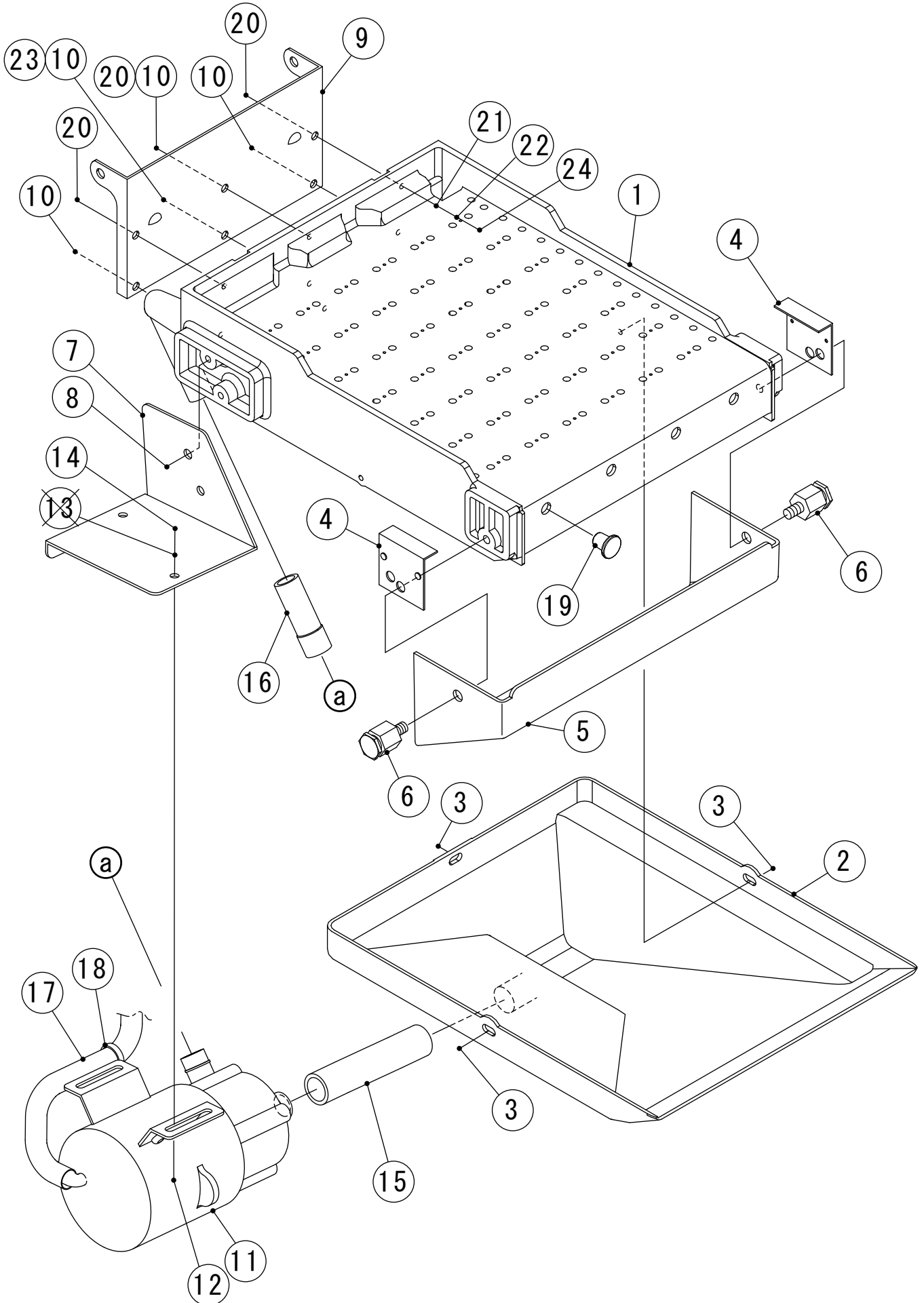


MODEL: IM-65NE(-25,-LM,-LM103,-Q) IM-65WNE(-25,) IM-65NS(-Q,-LM)			TITLE: K.BIN CONTROL SWITCH					
INDEX NO.	DESCRIPTION	MATERIAL OR MODEL NUMBER	PART NUMBER	REQ'D NUMBER				
				P-1				
1	SWITCH BOX COVER		4H8785-01	1				
		M142,M142-C001 M142-C005,M142-C100 M142-C150,M142-C162 M142-C163,M142-C200 M142-C202,M142-C203 M142-C204,M142-C250 M142-C251,M142-C252 M142-C253,M142-C254	2C0203P01	1				
2	SWICH BOX		2H2043-01	1				
		M142,M142-C001 M142-C005,M142-C100 M142-C150,M142-C162 M142-C163,M142-C200 M142-C202,M142-C203 M142-C204,M142-C250 M142-C251,M142-C252 M142-C253,M142-C254	1C0350P01	1				
3	SWITCH ACTUATOR		3H1369-01	1				
4	DETECTOR		3H0633-01	1				
		M142,M142-C100 M142-C162,M142-C200 M142-C202,M142-C203 M142-C204	3H9308-01	1				
	WORKING BAR	M142-C005,M142-C006 M142-C150,M142-C250 M142-C251,M142-C252 M142-C253,M142-C254	3H4610G01	1				
5	MICRO SWITCH		456432-02	1				
		M142-C001,M142-C163	P05714-02	1				

IM-65NE(-25)
IM-65WNE(-25)
IM-65NS

L. WATER PAN ASSY

(P-1) and later

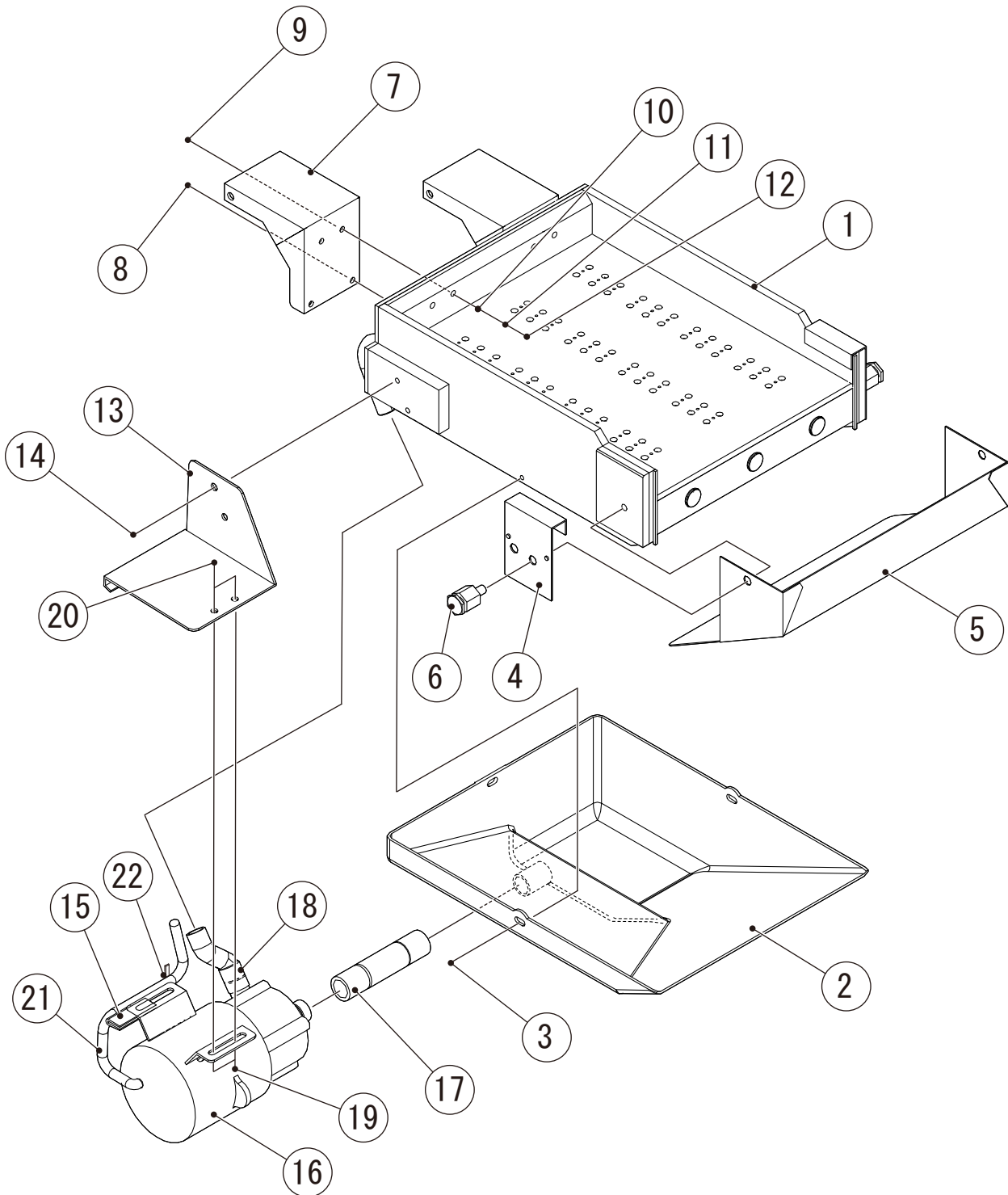


MODEL: IM-65NE(-25) IM-65WNE(-25) IM-65NS			TITLE: L.WATER PAN ASSY					
INDEX NO.	DESCRIPTION	MATERIAL OR MODEL NUMBER	PART NUMBER	REQ'D NUMBER				
				P-1				
1	WATER PLATE	M142-C001,M142-C003 M142-C163	2H0598G02	1				
		M142-C002,M142-C004	2H0598G03	1				
2	WATER TANK		2H1459-02	1				
3	TRUSS HEAD TAPPING SCREW T2		FT20408S0	3				
4	PLATE - LUBRICATION		4H0448-01	2				
5	DRAIN GUIDE		3H5521-01	1				
6	SCREW SPRING HOOK		4H2582G01	2				
7	BRACKET - PUMP MOTOR		4Y7294M01	1				
8	TRUSS HEAD TAPPING SCREW T2		FT20512M0	2				
		M142-C001,M142-C163	FT20512S0	2				
9	BRACKET - WATER PAN		4H2643-02	1				
10	TRUSS HEAD TAPPING SCREW T2	M142-C001,M142-C002 M142-C003,M142-C004 M142-C163	FT20412M0	4				
11	PUMP MOTOR		P04155-02	1				
12	HEX HEAD BOLT (SPRING WASHER AND FLAT WASHER)		FBK0412S0	2				
14	FLANGE NUT		FNHF04S0	2				
15	SUCTION TUBING		4H1922-02	1				
16	DISCHARGE TUBING		4H1982-01	1				
17	TUBE - SILICONE	EXCEPT(65NE-C)	4Y6751Z03	1				
18	TIE	CV-100N	7920-0002	1				
19	PLUG - CLEANING (C)	(65NE-H,-S)	414061-01	-				
20	TRUSS HEAD MACHINE SCREW	(65NE-H,-S,-C)	FST0420S0	-				
21	FLAT WASHER	(65NE-H,-S)	FWPL04S0	-				
		(65NE-C)		-				
22	SPRING WASHER	(65NE-H,-S)	FWSP04S0	-				
		(65NE-C)		-				
23	TRUSS HEAD SCREW	(65NE-C)	FSP0416S0	-				
24	NUT	(65NE-H,-S)	FNH104S0	-				
		(65NE-C)		-				

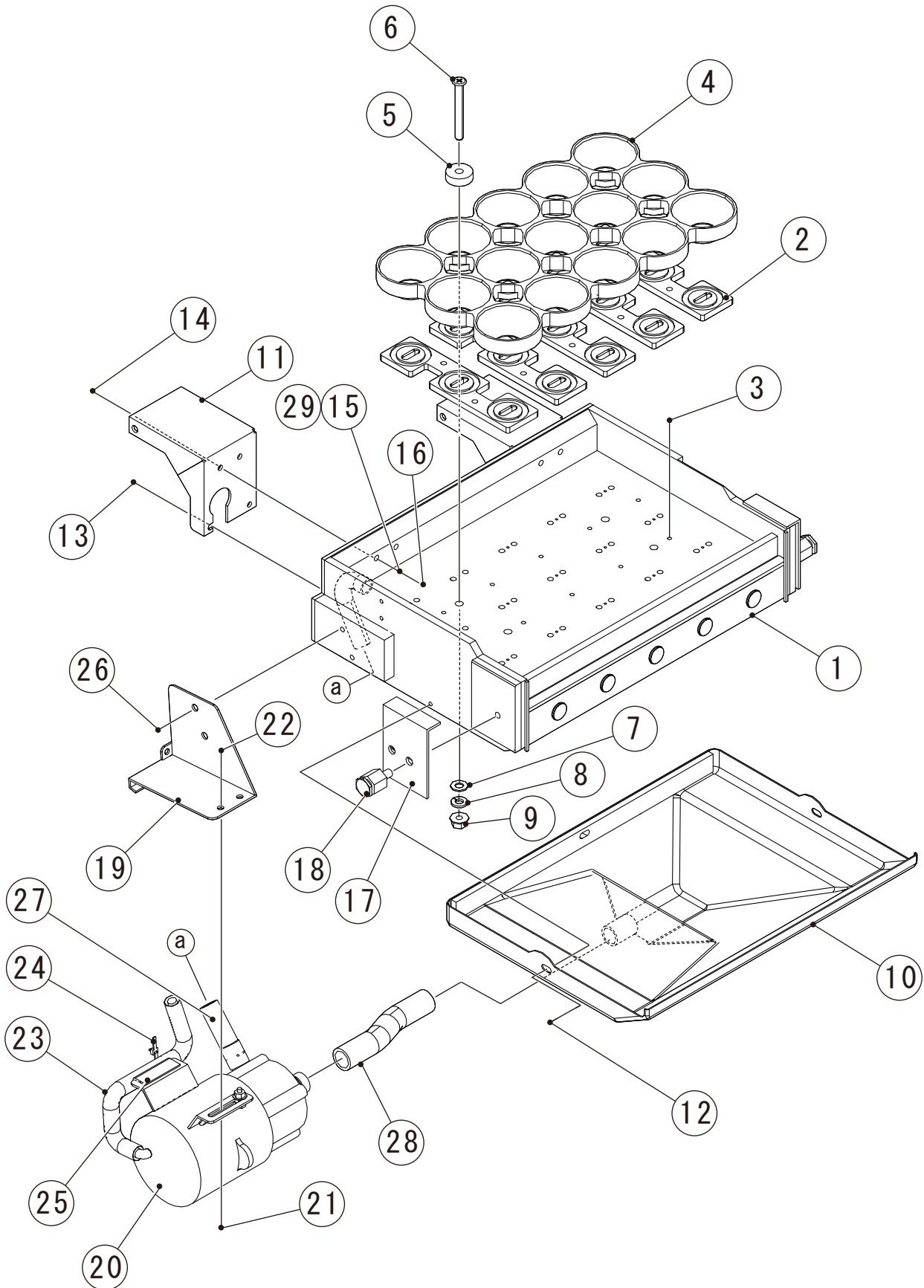
IM-65NE-LM
IM-65NE-LM103
IM-65NS-LM

L. WATER PAN ASSY

(P-1) and later



MODEL: IM-65NE-LM IM-65NE-LM103 IM-65NS-LM				TITLE: L.WATER PAN ASSY				
INDEX NO.	DESCRIPTION	MATERIAL OR MODEL NUMBER	PART NUMBER	REQ'D NUMBER				
				P-1				
1	WATER PLATE		1H0721G01	1				
2	WATER PAN		2H1631G01	1				
3	TRUSS HEAD SCREW		FST0408S0	3				
4	BRACKET (B)		4H6659-01	2				
		M142-C150,M142-C250 M142-C251,M142-C252 M142-C253,M142-C254	4C0718M01	2				
5	WATER GUIDE		2H1634-01	1				
		M142-C150,M142-C250 M142-C251,M142-C252 M142-C253,M142-C254	2C1594M01	1				
6	SCREW SPRING HOOK		4H2582G01	2				
7	BRACKET - WATER PLATE		3H3899-01	2				
		M142-C150,M142-C250 M142-C251,M142-C252 M142-C253,M142-C254	3C1333M01	2				
8	PAN HEAD MACHINE SCREW		FSP0416S0	4				
9	TRUSS HEAD MACHINE SCREW		FST0420S0	4				
10	FLAT WASHER		FWPL04S0	4				
11	SPRING WASHER		FWSP04S0	4				
12	NUT		FNH104S0	4				
13	BRACKET - PUMP MOTOR		4E0034M01	1				
		M142-C150,M142-C250 M142-C251,M142-C252 M142-C253,M142-C254	4C0696M01	1				
14	TRUSS HEAD MACHINE SCREW		FST0512S0	2				
15	-		-	-				
16	PUMP MOTOR		P04155-02	1				
17	SUCTION TUBING		4H1922-02	1				
18	DISCHARGE TUBING		4Y1376-01	1				
19	HEX HEAD BOLT (SPRING WASHER AND FLAT WASHER)		FBK0412S0	2				
20	FLANGE NUT		FNHF04S0	2				
21	TUBE-SILICONE		4Y6751Z03	1				
22	NYLON TIE		7920-0002	1				

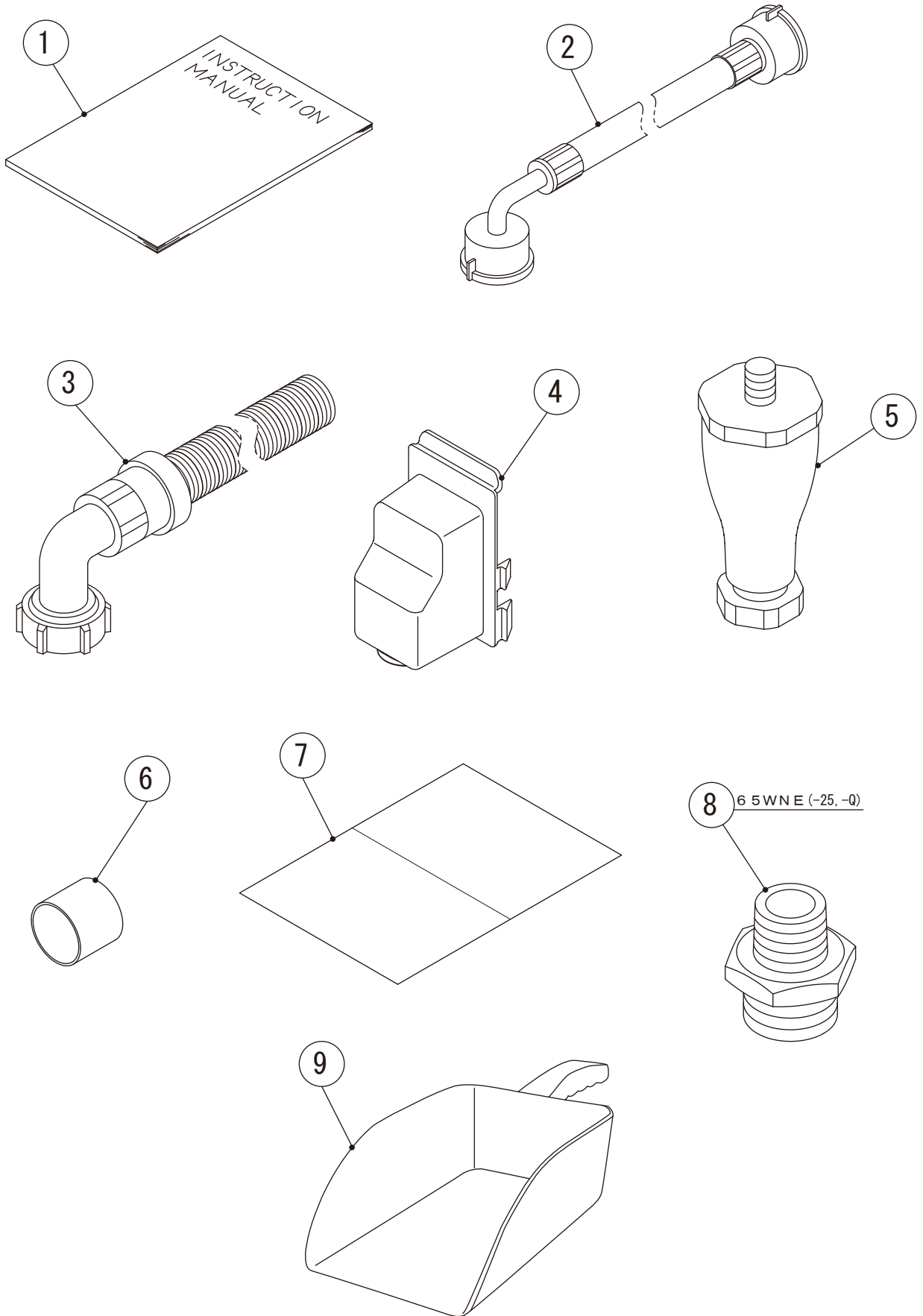


MODEL: IM-65NE-Q IM-65NS-Q		TITLE: L.WATER PAN ASSY						
INDEX NO.	DESCRIPTION	MATERIAL OR MODEL NUMBER	PART NUMBER	REQ'D NUMBER				
				P-1				
1	WATER PLATE		1H0696G01	1				
2	BASE-EVAPORATOR		4H6512-01	5				
3	TRUSS HEAD SCREW	M142-C100,M142-C200 M142-C202,M142-C203 M142-C204	FST0412S0	10				
				13				
4	EVAPORATOR (LO)		2H8529M01	1				
5	WASHER		4H1365-01	4				
6	SCREW EVAPORATOR		4Y4922M02	4				
7	FLAT WASHER		FWPL06S0	4				
8	SPRING WASHER		FWSP06S0	4				
9	FLANGE NUT		FNHF06S0	4				
10	WATER PAN		2H1754G01	1				
11	BRACKET(B)-WATER PLATE	M142-C100,M142-C200 M142-C202,M142-C203 M142-C204	3H5924-01	2				
			3C1406M01	2				
12	TRUSS HEAD SCREW	M142,M142-C162	FST0408S0	2				
13	PAN HEAD MACHINE SCREW		FSP0416S0	4				
14	TRUSS HEAD MACHINE SCREW		FST0420S0	4				
15	FLAT WASHER		FWPL04S0	4				
16	NUT		FNH104S0	4				
17	PLATE-WATER PLATE	M142-C100,M142-C200 M142-C202,M142-C203 M142-C204	4Y8235M01	2				
			4C0732M01	2				
18	SCREW SPRING HOOK		4H2582G01	2				
19	BRACKET-PUMP MOTOR	M142-C100,M142-C200 M142-C202,M142-C203 M142-C204	4E0035M01	1				
			4C0733M01	1				
20	PUMP MOTOR		P04155-02	1				
21	HEX HEAD BOLT (SPRING WASHER AND FLAT WASHER)		FBK0412S0	2				
22	FLANGE NUT		FNHF04S0	2				
23	TUBE-SILICONE		4Y6751Z03	1				
24	TIE		7920-0002	1				
25	-		-	-				
26	TRUSS HEAD SCREW		FST0512S0	2				
27	DISCHARGE TUBING		4H1982-01	1				
28	TUBE(B)		4H7400-01	1				
29	SPRING WASHER		FWSP04S0	4				

IM-65NE (-25, -LM, -LM103, -Q)
IM-65WNE (-25)
IM-65NS (-Q, -LM)

M. ACCESSORIES

(P-1) and later



MODEL: IM-65NE(-25-LM,-LM103,-Q) IM-65WNE(-25,) IM-65NS(-Q,-LM)			TITLE: M.ACCESSORIES					
INDEX NO.	DESCRIPTION	MATERIAL OR MODEL NUMBER	PART NUMBER	REQ'D NUMBER				
				P-1				
1	INSTRUCTION MANUAL		L1M141401	1				
		M142,M142-C001	L1M141402	1				
		M142-C100,M142-C150	L1M141301	1				
		M142-C162,M142-C163 M142-C200,M142-C202 M142-C203,M142-C204 M142-C250,M142-C251 M142-C252,M142-C253 M142-C254	L1M141101	1				
2	INLET HOSE		P03534-01	1				
		M142-C003,M142-C004		2				
3	OUTLET HOSE		452365-01	1				
		M142-C003,M142-C004		2				
4	COVER - CONNECTOR	EXCEPT(KOREA)	2X0271P01	1				
5	LEG		462576-02	4				
6	CAP		417323-01	1				
7	INSTRUCTION SHEET	M142,M142-C001 M142-C002,M142-C003 M142-C004,M142-C005 M142-C006,M142-C162 M142-C163	121594L01	1				
8	ADAPTOR	M142-C003,M142-C004	450724-01	2				
9	SCOOP		1H4123P01	1				
10	CERTIFICATE	M142-C100,M142-C150	478863L02	1				