



HOSHIZAKI



HACCP



FREEZER

FT-158MC-S

Key Features



**Self-Evaporating
Design**



**LED Interior
Lighting**



**R290
Natural Refrigerant**



Door Switch

Our A-Fit cabinet combines functionality and outstanding energy performance to meet Japanese quality standards, with precise temperature control to ensure food-ingredient freshness at all times. With the R290 natural refrigerant and a door switch preventing the evaporator fan from running while the refrigerator is open, they not only perform efficiently but also support a greener tomorrow.

This model is compliant with NEA's
Mandatory Energy Labelling Scheme (MELS) at 3 Tick.

ENERGY EFFICIENCY RATING

Good



Annual Energy Cost

\$620

Annual Energy Consumption

2295 kWh

Hoshizaki

Commercial Storage Refrigerator

FT-158MC-S

Capacity: 291.5 L

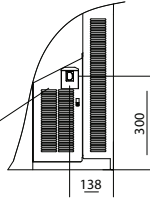
Tested in accordance with ISO 22041.
Actual annual energy consumption and cost may vary.
Scan QR code for more information
ELS-HSG-CSR250003



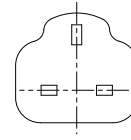


HOSHIZAKI

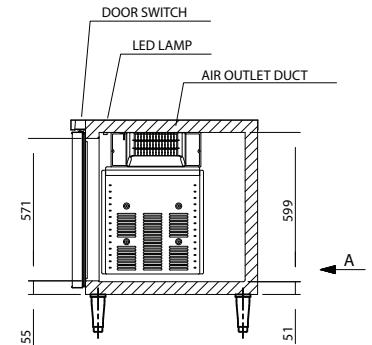
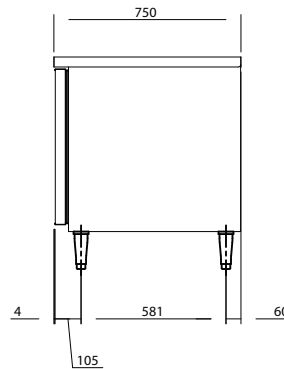
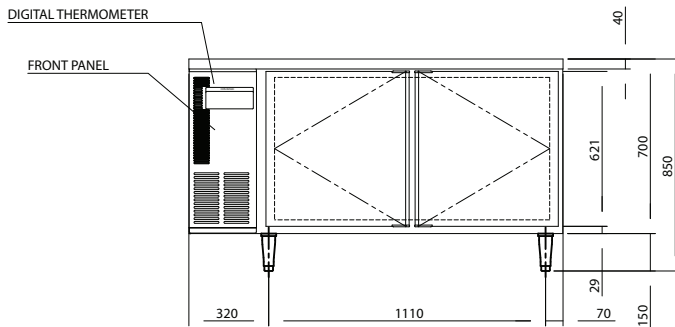
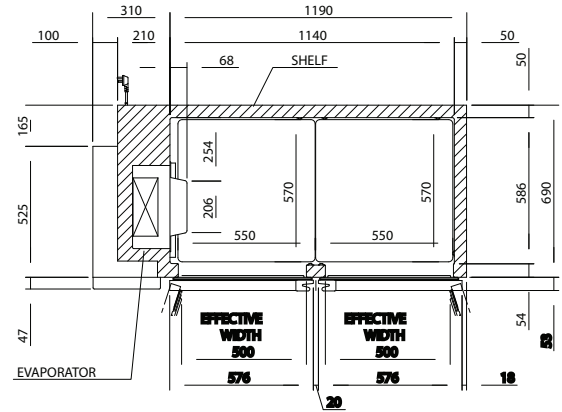
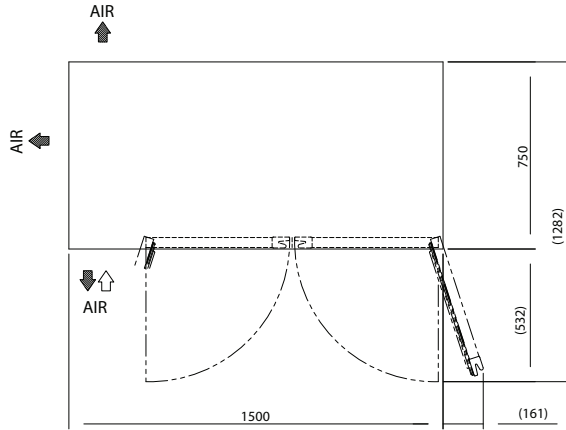
POWER CORD 2000 LONG OUTSIDE
(UK PLUG WITH EARTH WIRE)



VIEW A(1/10)



UK PLUG



MODEL	FT-158MC-S
POWER SUPPLY	1 Phase 220V~240V 50Hz / Capacity: 0.75kVA (3.50A)
ELECTRIC CONSUMPTION	Motor: 188W / Heater: 235W / Refrigeration: 233W / Defrost: 190W
TEMPERATURE CONTROL	Microprocessor (Digital Temp. Indication) Adjustable from -25 to -7°C
EFFECTIVE CAPACITY	Total 358L
WEIGHT	Net: 92kg / Gross 104kg
OUTSIDE DIMENSIONS	1500mm(W)× 750mm(D)×850(-880)mm(H)
PACKAGE	Carton (Wooden Pallet) 1565mm(W)×830mm(D)×790mm(H)
AMPERAGE	Rated 2.2A
SHELF	4 pcs
OPERATING CONDITIONS	Ambient Temperature: 5 - 38°C, Voltage Range: Rated Voltage ±6%

HOSHIZAKI SINGAPORE PTE LTD

18 Boon Lay Way #01-102 , Tradehub 21 S609966

Tel: +65 6225 2612 Website: www.hoshizaki.com.sg