



HOSHIZAKI

CERTIFICATION



HACCP International



ISO9001



Compliant with IEC60335-2-89 Standard

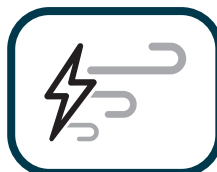
HR-148MC-SLD UPRIGHT LONG SOLID DOOR REFRIGERATOR



Key Features



Lower running cost



Powerful cooling performance



Self Closing Door



Removal door gaskets



Food Guard Shelf



Round Interior Corners



Large and clear display



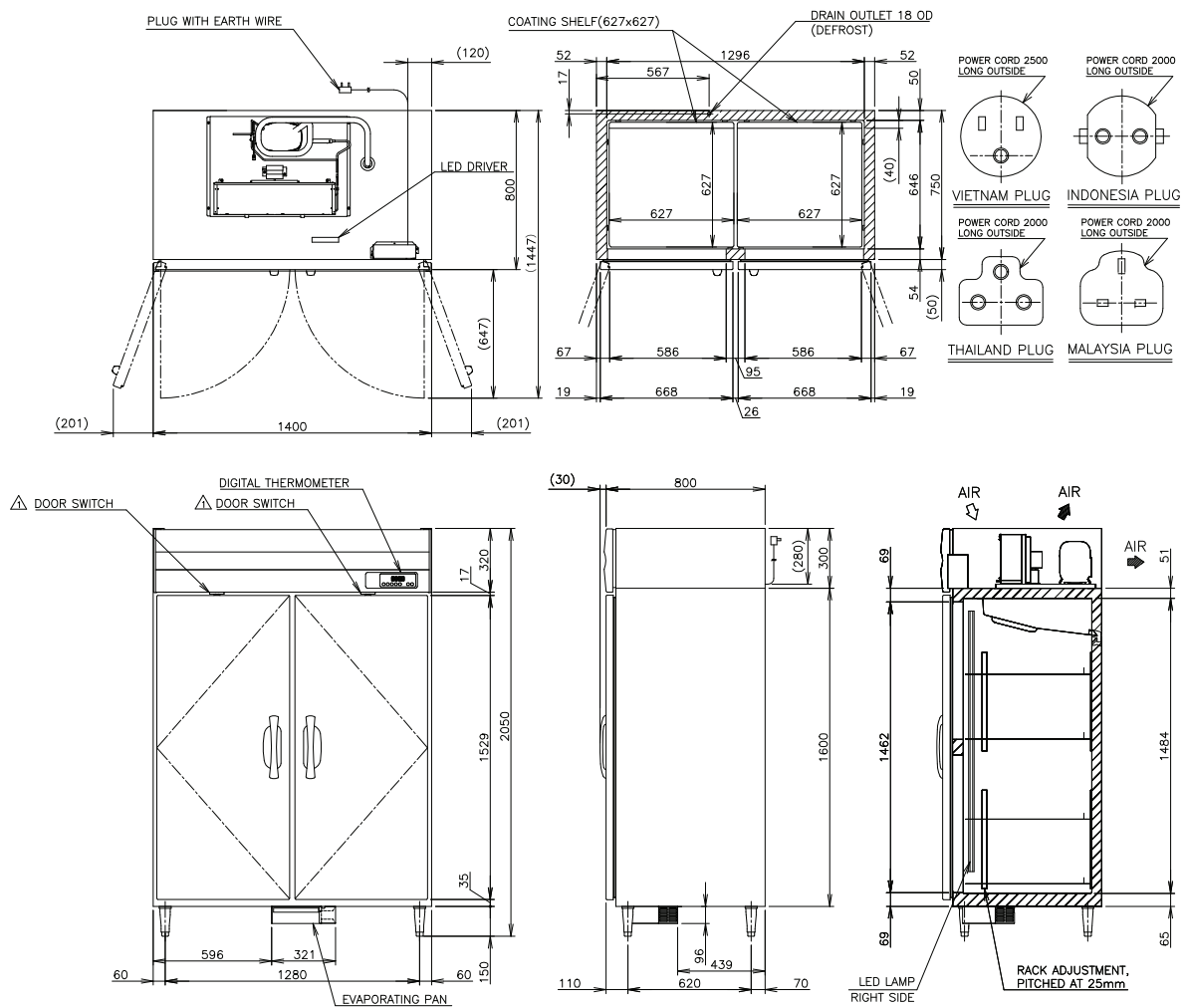
Drainage-Free Design



LED lighting



Dimensions & Specifications



MODEL	HR-148MC-SLD
POWER SUPPLY	1 Phase 220-240V 50Hz Capacity: 0.75kVA (3.50A)
ELECTRIC CONSUMPTION	477W
TEMPERATURE CONTROL	-6 to 12°C
STORAGE CAPACITY	1250L
WEIGHT	Net: 148kg (Gross: Approx. 183kg)
OUTSIDE DIMENSIONS	1400mm(W)× 800mm(D)×2050(-2080)mm(H)
PACKAGE	Carton(Wooden Pallet): 1460mm(W)×900mm(D)×2075mm(H)
NUMBER OF SHELVES	8
REFRIGERANT	R290
OPERATING CONDITIONS	Ambient Temperature: 5 - 38°C, Voltage Range: Rated Voltage ±6%



HOSHIZAKI

PT. HOSHIZAKI INDONESIA

